

40th Annual Sale

HEBBERT

Charolais Bulls

Saturday April 9, 2022 - 1:00 p.m. MST - Hyannis, Nebraska





HOW TO PARTICIPATE AS AN ABSENTEE BUYER

We have made preparations to bid and buy livestock through Superior Productions' "Call or Click-To-Bid" service for those unable to attend in person on sale day. Please note that all of the lots in the sale will also be available for viewing online prior to sale day at www.superiorlivestock.com.

Turn in Bids Over the Phone.

This is our traditional method of buying livestock. To get started simply go online to www.superiorlivestock.com and click on the tab titled "Register for a Buyer Number". Select the registration form for Superior Productions and print the registration form, fill it out and fax it in to Superior Productions at (817) 378-3380 with a signature on it, or scan and email the form to info@superiorauction.com. You can also mail it in to the address provided on the form. Upon receipt of this information Superior will call you with a buyer's number and the bid line phone number that you will use on sale day to place bids over the phone.

Click-To-Bid.

This is Superior's online bidding platform for cattle buying. Please note that high speed internet is required – this is not for dial-up or satellite internet. Registration is free, but you must become a member of www.superiorclicktobid.com to sign up. Becoming a member is easy – just go to the homepage of www.superiorclicktobid.com and follow the out-lined steps to get started. Input your information and select a username and password. You will receive an e-mail confirming you are a member. From that point forward you just have to sign in and select the sale you would like to register for and once approved you will receive an e-mail confirming which sale you are now registered for.

Viewing the Auction.

There are 2 places to view the sale broadcast live on the internet: www.superiorlivestock.com or www.superiorclicktobid.com. Just go to the home page of either website and select the auction. If you just want to watch the auction on your computer, smartphone or tablet go to www.superiorlivestock.com, but if you want to bid over the computer you must go to www.superiorclicktobid.com. Remember you can call in to bid on the internet, but you must be a member of www.superiorclicktobid.com to "click-to-bid". Your computer must have Flash Media Player installed for this website to view the auction. If you have any questions, please call the Superior Productions office at 800-431-4452.

*If you plan to bid by phone through Superior Livestock or 'Click-to-Bid', you must register at www.superiorlivestock.com prior to bidding.

Functional cows are the backbone of our operation. We cull our cows rigorously, keeping only the best. Every cow in the herd has been bred on the Hebbert Ranch. This has enabled us to stack generations of pedigrees high in maternal traits and qualities consistent with problem free cows – particularly udder structure, fertility, calving ease, disposition, total performance and structural soundness.

Hebbert Charolais

2011-2013, 2016-2020 AICA Area 4 Top Registration Award



The American International Charolais Association's Dam of Distinction program recognizes dams that have consistently weaned calves with above average weaning weights and calving intervals of 380 days or less.

For the past eight years, 2013-2020, Hebbert Charolais is the #2 Breeder nationally for dams achieving AICA Dam of Distinction status.

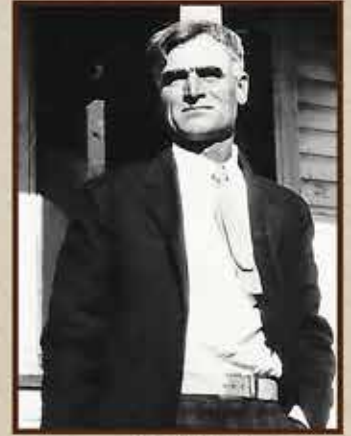
Hebbert Charolais has over 50 Active Dams of Distinction.

Our History

James Wright, a native of Grant County, Wisconsin, came to Nebraska in 1872 with his parents. They arrived with three teams of oxen and forty head of cattle. In Hamilton County, Nebraska, James bought a homestead right and timber claim of 80 acres. In 1886, he headed west to the Sandhills of Nebraska and settled in Grant County, purchasing land in 1887.

James was the father of four boys. His son, Ben Wright, took over a portion of the ranch and continued in the cattle business, buying additional neighboring homesteads. Opal, one of Ben's three daughters, inherited a share of the land. She and husband, Merle Rex, formed a ranching operation, with their daughter, Merla, and her husband, Mose Hebbert.

What began as a Hereford based commercial cow-calf ranch transitioned into a purebred operation with the purchase of registered Charolais cows. The last of the commercial cows were dispersed in 1982 and the Hebbert Charolais partnership was formed between Mose and Merla, their son, Dave, and his wife, Mickie. Dave and Mickie's oldest son, Matt and wife, Lacy, are now managing partners in Hebbert Charolais. Their sons, Dillon and Waylon, represent the seventh generation to live and work on the family owned ranch.



Ben Wright



Merla Rex

We are thankful for those who laid the foundation of raising good cattle, a tradition of riding and raising good horses and being faithful stewards of the land. We are dedicated to continue that legacy and build upon it.

- ★ Nebraska Pioneer Award - 1886
- ★ BIF (Beef Improvement Federation) Seedstock Nominee - 1995
- ★ American International Charolais Association Seedstock Producer of the Year - 1996
- ★ NCA Outstanding Producer Award - 2010
- ★ Mose Hebbert honored as an American Quarter Horse Association Legacy Breeder - 2016
- ★ Dave and Mickie Hebbert AICA Hall of Fame Inductees - 2018



Mickie, Dillon, Matt, Lacy & Waylon

HEBBERT Charolais Ranch

40th Annual Bull Sale

Saturday April 9, 2022 - 1:00 p.m. MST - Hebbert Sale Facility - Hyannis, Nebraska
Be our guest for lunch at 11:30 a.m.

LOCATION

Hebbert Sale Facility
73859 East Hwy 2
Hyannis, Nebraska

SALE DAY PHONES

Sale Office:
308-458-2811

Matt Hebbert:
C 308-458-8812

Lacy Hebbert:
C 308-458-8823

Ranch Phone:
308-458-2540

AUCTIONEER

Kyle Schow
308-289-3772

REPRESENTATIVES

Hadley Schotte
AICA/Charolais Journal
785-562-6632

Jake St. Amant
TSLN/Fence Post
308-568-9084

Colt Keffer
CK Sales and Marketing
765-376-8784

ANNOUNCEMENTS

Announcements from the auction block on sale day take precedence over information in this catalog.

HEALTH

Dr. Jon Werth
Dr. Zach Adam
Dr. Joseph Christen
Hyannis Veterinary Service
308-458-2735

Every bull offered for sale will have passed a complete breeding soundness exam. Scrotal measurement information will be available sale day. All bulls tested negative for BVD and will be furnished with interstate health papers.

Bulls going to states which require trich tests on virgin bulls will be tested before delivery.

GUARANTEE

All bulls sell backed by the Hebbert Ranch Guarantee. They are guaranteed throughout the first breeding season against injury or death. If a replacement bull is not available, credit will be issued at the next annual sale. All claims for replacements need to be made by September of the current year.

DELIVERY

Another added value of our program is free delivery within a radius of 500 miles. Should you choose to haul your own purchases on sale day, we offer a \$100/bull delivery rebate.

LIABILITY

Hebbert Charolais does not assume any liability in case of accident or loss of property.

Many changes have occurred in the past 40 years, but some things remain the same. Our mission from the beginning has been to produce quality genetics that work for purebred and commercial cattlemen and to stand behind the cattle we sell. We are fortunate to be in a business that connects us with cattle producers from all across the country. We acknowledge the diversity of each operation in its approach towards beef production. Please call if we can assist you in finding bulls to fit your cattle breeding program. We look forward to visiting with you.



www.HebbertRanch.com

Y 1

HC ARLINGTON 1364

3/23/2021 • M962928 • P

LT PATRIOT 4004 PLD
M852822

LT LEDGER 0332 P

LK MISS RIO 2119

M6 GRID MAKER 104 PET

HC GRID MAKER 5078
F1212575

HC SILVER 0141

LT BLUEGRASS 4017 P
LT BRENDA 6120 PLD

LK DISTANT RIO 900
LK MISS SILVER T 059
WCR SIR TRADITION 066
VCR MISS MAC IV 317

LT SILVER DISTANCE 5342P
HC CAD 3 8090

BW: 90 AWW: 777

	CE	BW	WW	YW	TM	SC	CW	REA	MARB	TSI
EPDs:	5.3	-1.6	70	120	64	0.9	22	0.63	0.16	260.28

- A Patriot 4004 bull that combines the Trait Leading genetics of Bluegrass 4017/Ledger 0332 with Gridmaker 104/Silver Distance 5342
- Note the WW/top 9% and YW/top 15% for the Charolais breed
- HC Grid Maker 5078 is a Dam of Distinction



Lot 1



Lot 2

Y 2

HC MOMENTUM 1333

3/19/2021 • M962714 • P

LT RUSHMORE 6033 PLD
M880332

LT RUSHMORE 8060 PLD

LT AMANDA 4338 PLD

BOX P PENDLETON 9022 P/S

HC PENDLETON 4110
F1192427

HC BLEND 1026

LT RIO BRAVO 3181 P
LT BRENDA'S EASE 3055PLD

LT LONG DISTANCE 9001 PLD
LT AMANDA 6208 PLD
LT BLUEGRASS 4017 P
BOX P LYDIA 7091 P

LT EASY BLEND 5125 PLD
HC EDGE 4021

BW: 85 AWW: 727

	CE	BW	WW	YW	TM	SC	CW	REA	MARB	TSI
EPDs:	7.6	-2.1	67	122	63	1.3	26	0.59	0.14	263.58

- A performance pedigree with the genetic influence of Trait Leaders Rio Bravo 3181, Rushmore 8060, Long Distance 9001, Bluegrass 4017 and Easy Blend 5125
- HC Blend 1026 and HC Edge 4021 - Dams of Distinction
- Exceptional BW/WW/YW EPDs and a TSI/top 10%



Lot 3

Y 3

HC ARLINGTON 1419

3/18/2021 • M962933 • P

LT PATRIOT 4004 PLD
M852822

LT LEDGER 0332 P

LK MISS RIO 2119

HC FREE RANGE 4201 ET

HC FREE RANGE 6204
F1230737

HC LONE RANGER 4158

LT BLUEGRASS 4017 P
LT BRENDA 6120 PLD

LK DISTANT RIO 900
LK MISS SILVER T 059
LT LONG DISTANCE 9001 PLD
HC DUKE 9145

HC LONG RANGE 1395
HC RIDGE 2006

BW: 95 AWW: 661

	CE	BW	WW	YW	TM	SC	CW	REA	MARB	TSI
EPDs:	5	-1.8	63	117	56	1	26	0.64	0.16	260.44

- Patriot 4004 consistently sires cattle with extra width and muscle. His dam is a double bred daughter of Trait Leader Silver Distance 5342
- HC Ridge 2006 – Dam of Distinction

Y 4

HC LOYALIST 1327

3/10/2021 • M962710 • P

NGC LOYALIST 839F ET
EM930613

LT PATRIOT 4004 PLD

M&M MS NEW STANDARD 3517 PLDET

LT-HC BLUE ROCK 0368 P

HC BLUE ROCK 4023
F1192571

HC JESSE 7085

LT LEDGER 0332 P
LK MISS RIO 2119

M6 NEW STANDARD 842 P ET
M&M MS STEALTH 9509 PLD ET

LT BLUEGRASS 4017 P
LT BRENDA'S EASE 3055PLD

HC JESSE 4320
HC CAD 4022

BW: 102 AWW: 701

	CE	BW	WW	YW	TM	SC	CW	REA	MARB	TSI
EPDs:	2	0.4	66	118	60	1	30	0.71	0.15	257.58

- Sire NGC Loyalist 839 ranks in the top 10% for WW/YW and 2% for CW
- Dam HC Blue Rock 4023 has an average WW of 5 calves/102 index



Lot 4

Y 5

HC WALKER 1351

3/20/2021 • M962723 • H

CCC MESCALITO 9038 P
M930975

WC MILESTONE 5223 P

WC CCC SWEETHEART 6166 P ET

HC LONG RANGE 5013
F1212513

HC TRES 7048

WC BENELLI 2134 P ET
WC LADY BLUE 0506 P

CCC WC RESOURCE 417 P
BALDRIDGE SWEETHEART 7M
LT SILVER DISTANCE 5342P
LT BELLE 7026 P

HEBBERTS TRES 3333
HC CAD 2053

BW: 86 AWW: 662

	CE	BW	WW	YW	TM	SC	CW	REA	MARB	TSI
EPDs:	11.1	-2.9	53	91	56	0.3	15	0.66	0.19	237.43

- Sire Mescalito 9038's pedigree is a combination of Milestone 5223 and Resource 417, both top ranking bulls for carcass qualities
- Powerful maternal influence of triple Dams of Distinction - HC Long Range 5013, HC Tres 7048 (Diamond Dam) and HC Cad 2053



Lot 5

Y 6

HC KNIGHTED 1304

3/23/2021 • M962690 • P

WCR SIR KINGSBURY 7334 P
M896195

WCR MS FIREWATER 127 P

M6 GRID MAKER 104 PET

HC GRID MAKER 2002
F1154915

HC CIGAR 2043

EATONS VISIONARY 2044 P
WCR MISS POWEREDGE 9132 P

TR MR FIREWATER 8600U
WCR MS PRINCE 939 P
WCR SIR TRADITION 066
VCR MISS MAC IV 317

LHD CIGAR E46
HC CHAPS 6146 P

BW: 98 AWW: 690

	CE	BW	WW	YW	TM	SC	CW	REA	MARB	TSI
EPDs:	5.6	-1.1	52	101	60	0.7	17	0.61	0.04	244.32

- A pedigree stacked with sires who have achieved Trait Leader status - Visionary 2044, Kingsbury 116, Firewater 8600U, Grid Maker 104 and Cigar E46
- HC Grid Maker 2002 - Diamond Dam of Distinction



Lot 7

Y 7

HC WALKER 1380

3/15/2021 • M962748 • P

CCC MESCALITO 9038 P
M930975

WC MILESTONE 5223 P

WC CCC SWEETHEART 6166 P ET

HC BLUE ROCK 2403

HC BLUE STONE 5174
F1212659

HC LONE RANGER 3022

WC BENELLI 2134 P ET
WC LADY BLUE 0506 P

CCC WC RESOURCE 417 P
BALDRIDGE SWEETHEART 7M
LT-HC BLUE ROCK 0368 P
HC LEAD R 0120

HC LONG RANGE 1395
HC MONTY 8005

BW: 104 AWW: 677

	CE	BW	WW	YW	TM	SC	CW	REA	MARB	TSI
EPDs:	3.4	1.5	60	108	53	0.8	23	0.68	0.28	251.64

- Herd sire Mescalito 9038 is a blend of the highly acclaimed genetics of Resource 417 and Baldridge Sweetheart 7M
- HC Monty 8005 - Dam of Distinction

Y 8

HC ARLINGTON 1408

3/9/2021 • M962930 • P

LT PATRIOT 4004 PLD
M852822

LT LEDGER 0332 P

LK MISS RIO 2119

HC SMOOTH BLEND 6128
F1230685

HC PENDLETON 3334

HC BLUE 3041

LT BLUEGRASS 4017 P
LT BRENDA 6120 PLD

LK DISTANT RIO 900
LK MISS SILVER T 059
BOX P PENDLETON 9022 P/S
HC MORE BLEND 0110

LT BLUE MOUNTAIN 1041 PLD
HC LEADER 8113

BW: 80 AWW: 654

	CE	BW	WW	YW	TM	SC	CW	REA	MARB	TSI
EPDs:	10.9	-4.4	57	107	54	1.1	27	0.59	0.15	251.97

- A Patriot bull with a BW EPD in the breeds top 4%
- HC Leader 8113 - Dam of Distinction



Lot 9



Lot 8

Y 9

HC AGATE 1417

3/15/2021 • M962770 • P

LT-HC BLUE ROCK 0368 P
M791645

LT BLUEGRASS 4017 P

LT ASSERTION 1277 P
LT PEARL'S BREEZE 2236 P

LT BRENDA'S EASE 3055PLD

LT UNLIMITED EASE 9108
LT BRENDA 1014 PLD

HC FREE RANGE 6195
F1230729

HC FREE RANGE 4201 ET

LT LONG DISTANCE 9001 PLD
HC DUKE 9145

HC PENDLETON 4121

BOX P PENDLETON 9022 P/S
HC BLEND 1063

BW: 92 AWW: 671

	CE	BW	WW	YW	TM	SC	CW	REA	MARB	TSI
EPDs:	8.1	-1.8	63	117	53	1.1	22	0.66	0.18	261.49

- Sire Blue Rock 0368 is a 3/4 brother to LT Ledger 0332. His pedigree carries a number of Trait Leading Sires, most notably Bluegrass 4017, Assertion 1277, and Unlimited Ease 9108 and Dams of Distinction - Brenda's Ease 3055 and Brenda 1014

Y 10

HC SLEDGE 1566

4/12/2021 • M965445 • P

LT SILVER LEDGE 4063 P
M852837

LT LEDGER 0332 P

LT MOLLY 8011 PLD

HC PENDLETON 2024
F1154932

BOX P PENDLETON 9022 P/S

HC EASY 4142

LT BLUEGRASS 4017 P
LT BRENDA 6120 PLD

LT SILVER DISTANCE 5342P
LT MOLLY 6049 PLD

LT BLUEGRASS 4017 P
BOX P LYDIA 7091 P

LT UNLIMITED EASE 9108
HC FASTTRACK 2159

BW: 95 AWW: 682

	CE	BW	WW	YW	TM	SC	CW	REA	MARB	TSI
EPDs:	2.3	1.1	52	105	42	0.9	20	0.55	0.13	246.6

- Sire Silver Ledge 4063 has a stacked pedigree with Ledger 0332 and Dam of Distinction, Molly 8011
- HC Easy 4142 - Dam of Distinction

Y 11

HC SLATE 1306

4/6/2021 • M962692 • P

HC BLUE ROCK 2403
M818336

LT-HC BLUE ROCK 0368 P

LT BLUEGRASS 4017 P
LT BRENDA'S EASE 3055PLD

HC LEAD R 0120

HC LEADER 8205
HC CHINOOK 7146

HC MORE BLEND 2089
F1155298

HC HPF BLEND 888

LT EASY BLEND 5125 PLD
HC WALLSTREET 1120

HC WIND 8058

TR MR WYOMING WIND 5583R
HC PAUL 4063

BW: 99 AWW: 704

	CE	BW	WW	YW	TM	SC	CW	REA	MARB	TSI
EPDs:	4.8	0.3	62	102	50	0.9	17	0.57	0.16	242.04

Y 12

HC WALKER 1309

3/15/2021 • M962695 • P

CCC MESCALITO 9038 P
M930975

WC MILESTONE 5223 P

WC CCC SWEETHEART 6166 P ET

HC BLUE ROCK 2147
F1154673

LT-HC BLUE ROCK 0368 P

HC BLEND 0017

WC BENELLI 2134 P ET
WC LADY BLUE 0506 P

CCC WC RESOURCE 417 P
BALDRIDGE SWEETHEART 7M

LT BLUEGRASS 4017 P
LT BRENDA'S EASE 3055PLD

LT EASY BLEND 5125 PLD
HC MONTY 2033

BW: 107 AWW: 676

	CE	BW	WW	YW	TM	SC	CW	REA	MARB	TSI
EPDs:	2.5	1.5	64	113	57	0.9	27	0.69	0.25	255.1

- HC Blend 0017 - Diamond Dam of Distinction

Y 13

HC LOYALIST 1310

3/25/2021 • M962696 • P

NGC LOYALIST 839F ET
EM930613

LT PATRIOT 4004 PLD

M&M MS NEW STANDARD 3517 PLDET

HC DUKE 2190
F1154852

OAKDALE DUKE 9003P

HC LEADER 0154 TW

LT LEDGER 0332 P
LK MISS RIO 2119

M6 NEW STANDARD 842 P ET
M&M MS STEALTH 9509 PLD ET
VCR SIR DUKE 135 PLD
MISS VELVEETA JANE 630

LT LEADER BOARD 6110 P
HC SILVER 8136

BW: 95 AWW: 616

	CE	BW	WW	YW	TM	SC	CW	REA	MARB	TSI
EPDs:	6	-1.8	61	112	58	1.2	22	0.63	0.14	255.48

- HC Duke 2190 is a productive daughter of Oakdale Duke 9003, an influential long time multiple trait leading sire

Y 14

HC LOYALIST 1312

3/8/2021 • M962698 • P

NGC LOYALIST 839F ET
EM930613

LT PATRIOT 4004 PLD
M&M MS NEW STANDARD 3517 PLDET

HC LEAD R 3007
F1174757

LT LEDGER 0332 P
LK MISS RIO 2119

M6 NEW STANDARD 842 P ET
M&M MS STEALTH 9509 PLD ET

LT LEADER BOARD 6110 P
HC CAD 0130

HC EDGE 4258
HC CIGAR 2043

BW: 104 AWW: 667

	CE	BW	WW	YW	TM	SC	CW	REA	MARB	TSI
EPDs:	2.2	0.9	66	111	59	1.1	27	0.7	0.12	247.6

- HC Lead R 3007 - Dam of Distinction
- HC Edge E 6077 - Diamond Dam of Distinction

Y 15

HC SLEDGE 1561

3/19/2021 • M965440 • P

LT SILVER LEDGE 4063 P
M852837

HC LONE RANGER 3023
F1174770

LT LEDGER 0332 P

LT MOLLY 8011 PLD

HC LONG RANGE 1395

HC RHINESTONE 8007

LT BLUEGRASS 4017 P
LT BRENDA 6120 PLD

LT SILVER DISTANCE 5342P
LT MOLLY 6049 PLD

LT LONG DISTANCE 9001 PLD
HC DUKE 9145

LT EASY PRO 1158 PLD
HC CHUCK 9104

BW: 97 AWW: 659

	CE	BW	WW	YW	TM	SC	CW	REA	MARB	TSI
EPDs:	1.9	0.9	52	106	41	0.6	21	0.63	0.21	250.88

- A powerful, proven pedigree with Trait Leaders Bluegrass 4017, Ledger 0332, Silver Distance 5342, Long Distance 9001 and Easy Pro 1158

Y 16

HC LOYALIST 1313

3/25/2021 • M962699 • P

NGC LOYALIST 839F ET
EM930613

HC LONE RANGER 3026
F1174773

LT PATRIOT 4004 PLD
M&M MS NEW STANDARD 3517 PLDET

HC LONG RANGE 1395

HC CADE 8026

LT LEDGER 0332 P
LK MISS RIO 2119

M6 NEW STANDARD 842 P ET
M&M MS STEALTH 9509 PLD ET

LT LONG DISTANCE 9001 PLD
HC DUKE 9145

HC CAD 2360
HC CAD 2001

BW: 85 AWW: 688

	CE	BW	WW	YW	TM	SC	CW	REA	MARB	TSI
EPDs:	5.9	-2.3	65	116	58	1.2	28	0.72	0.16	258.38

Y 17

HC SLATE 1314

3/29/2021 • M962700 • P

HC BLUE ROCK 2403
M818336

HC LONE RANGER 3027
F1174774

LT-HC BLUE ROCK 0368 P

HC LEAD R 0120

HC LONG RANGE 1395

HC RIO 8027

LT BLUEGRASS 4017 P
LT BRENDA'S EASE 3055PLD

HC LEADER 8205
HC CHINOOK 7146

LT LONG DISTANCE 9001 PLD
HC DUKE 9145

LT RIO BRAVO 3181 P
HC CIGAR 2043

BW: 98 AWW: 580

	CE	BW	WW	YW	TM	SC	CW	REA	MARB	TSI
EPDs:	5.3	-0.7	49	97	46	1	18	0.62	0.26	245.95

- A Blue Rock 2403 bull with a top ranking EPD Marb/4%
- HC Rio 8027 - Dam of Distinction

Y 18

HC LOYALIST 1316

3/19/2021 • M962701 • P

NGC LOYALIST 839F ET
EM930613

HC BLUE 3041
F1174801

LT PATRIOT 4004 PLD
M&M MS NEW STANDARD 3517 PLDET

LT BLUE MOUNTAIN 1041 PLD

HC LEADER 8113

LT LEDGER 0332 P
LK MISS RIO 2119

M6 NEW STANDARD 842 P ET
M&M MS STEALTH 9509 PLD ET

LT BLUE VALUE 7903 ET
LT GRACIE 9007 POLLED

LT LEADER BOARD 6110 P
HC GRID MAKER 6042

BW: 91 AWW: 609

	CE	BW	WW	YW	TM	SC	CW	REA	MARB	TSI
EPDs:	3	-0.5	62	114	55	1.2	29	0.71	0.2	256.19

- HC Leader 8113 - Dam of Distinction

Y 19

HC CANYON 1318

3/21/2021 • M962702 • P

HC RIMROCK 4247
M851660

HC PENDLETON 3060
F1174819

LT-HC BLUE ROCK 0368 P

HC LEADER 8145

BOX P PENDLETON 9022 P/S

HC CARGO 9065

LT BLUEGRASS 4017 P
LT BRENDA'S EASE 3055PLD

LT LEADER BOARD 6110 P
HC EZ TQ 6150

LT BLUEGRASS 4017 P
BOX P LYDIA 7091 P

SCHURRTOP X403 H838 P
HC TQ 4082

BW: 99 AWW: 625

	CE	BW	WW	YW	TM	SC	CW	REA	MARB	TSI
EPDs:	3	0.9	55	108	47	1.5	21	0.63	0.16	251.38

- HC Cargo 9065 - Dam of Distinction

Y 20

HC CANYON 1319

4/3/2021 • M962703 • P

HC RIMROCK 4247
M851660

HC ROCKET 3063
F1174822

LT-HC BLUE ROCK 0368 P

HC LEADER 8145

WC ROCKET 0021 P

HC SPUR 9076

LT BLUEGRASS 4017 P
LT BRENDA'S EASE 3055PLD

LT LEADER BOARD 6110 P
HC EZ TQ 6150

WC-WCCC ROCKETFUEL 7109
WC BRENDA BEEBOP 8008

SCC SPUR 49S PLD
HC CAD E 5013

BW: 71 AWW: 605

	CE	BW	WW	YW	TM	SC	CW	REA	MARB	TSI
EPDs:	11.1	-3.4	49	96	43	1.5	20	0.75	0.14	244.94

- A low Birthweight bull with a corresponding BW EPD in the top 9%



Crossbred Calves for optimal terminal cross breeding value from the ranch through the feeder

Y 21

HC LOYALIST 1320

3/26/2021 • M962704 • S

NGC LOYALIST 839F ET
EM930613

LT PATRIOT 4004 PLD
M&M MS NEW STANDARD 3517 PLDET
BOX P PENDLETON 9022 P/S
HC DUKE 9170

LT LEDGER 0332 P
LK MISS RIO 2119
M6 NEW STANDARD 842 P ET
M&M MS STEALTH 9509 PLD ET
LT BLUEGRASS 4017 P
BOX P LYDIA 7091 P
OAKDALE DUKE 9003P
HC PRO 7124

BW: 89 AWW: 657

	CE	BW	WW	YW	TM	SC	CW	REA	MARB	TSI
EPDs:	5.3	-1	68	123	60	1.2	27	0.65	0.14	263.85

- A stacked pedigree combining the genetics of Patriot 4004, New Standard 842, Bluegrass 4017 and Oakdale Duke 9003

Y 22

HC CANYON 1322

4/1/2021 • M962705 • P

HC RIMROCK 4247
M851660

LT-HC BLUE ROCK 0368 P
HC LEADER 8145
BOX P PENDLETON 9022 P/S
HC STASH 0061

LT BLUEGRASS 4017 P
LT BRENDA'S EASE 3055PLD
LT LEADER BOARD 6110 P
HC EZ TQ 6150
LT BLUEGRASS 4017 P
BOX P LYDIA 7091 P
CCR HAMS STASHER R801 P
HC CAD 5040

BW: 98 AWW: 637

	CE	BW	WW	YW	TM	SC	CW	REA	MARB	TSI
EPDs:	1	1.4	56	111	48	1.4	23	0.69	0.15	253.76

Y 23

HC LOYALIST 1323

3/22/2021 • M962706 • P

NGC LOYALIST 839F ET
EM930613

LT PATRIOT 4004 PLD
M&M MS NEW STANDARD 3517 PLDET
BOX P PENDLETON 9022 P/S
HC LEAD 0133

LT LEDGER 0332 P
LK MISS RIO 2119
M6 NEW STANDARD 842 P ET
M&M MS STEALTH 9509 PLD ET
LT BLUEGRASS 4017 P
BOX P LYDIA 7091 P
HC LEADER 8381
HC CAD 3 8048

BW: 100 AWW: 667

	CE	BW	WW	YW	TM	SC	CW	REA	MARB	TSI
EPDs:	0.5	1.4	65	117	56	1	27	0.63	0.14	255.15

Y 24

HC COMMISSIONED 1324

3/25/2021 • M962707 • P

HC COMMISSIONER 9557
M932706

HCR EQUITY 3123 PLD
MISS HCR RANDI 8410 P TW
HC MS CROSS COUNTRY 7219
HC LONG RANGE 1395
HC LONE RANGER 3135
F1174888
HC NASHVILLE 1056

HCR NETWORK 7017 PLD
MISS HCR RANDI 8410 P TW
LT LONG DISTANCE 9001 PLD
HC ASPEN 5190
LT LONG DISTANCE 9001 PLD
HC DUKE 9145
BROBERG'S V41
HC GRID MAKER 6002

BW: 96 AWW: 636

	CE	BW	WW	YW	TM	SC	CW	REA	MARB	TSI
EPDs:	3.3	-0.4	56	98	52	0.4	12	0.61	0.21	243.24

- HC Lone Ranger 3135 - Dam of Distinction

Y 25

HC FIRST HAND 1325

3/20/2021 • M962708 • P

WR TOP HAND C631
M867612

WR MISS PRINCESS T629
LT-HC BLUE ROCK 0368 P
HC SPUR 1142

LT LEDGER 0332 P
LT BLUEGRASS 4017 P
LT BRENDA 6120 PLD
OAKDALE DUKE 9003P
WR EASE 4412
LT BLUEGRASS 4017 P
LT BRENDA'S EASE 3055PLD
SCC SPUR 49S PLD
HC CHINOOK 8146

BW: 106 AWW: 687

	CE	BW	WW	YW	TM	SC	CW	REA	MARB	TSI
EPDs:	3	-0.1	60	106	49	1.1	19	0.67	0.19	247.74

- A loaded pedigree with high accuracy trait leading sires and three Dams of Distinction - Miss Princess 629, Brenda's Ease 3005 and HC Chinook 8146

Y 26

HC SLEDGE 1551

3/11/2021 • M965430 • P

LT SILVER LEDGE 4063 P
M852837

LT LEDGER 0332 P
LT MOLLY 8011 PLD
LT LONG DISTANCE 9001 PLD
HC LONG RANGE 4001 ET
EF1192547
HC DUKE 9145

LT BLUEGRASS 4017 P
LT BRENDA 6120 PLD
LT SILVER DISTANCE 5342P
LT MOLLY 6049 PLD
LT SILVER DISTANCE 5342P
LT BELLE 7026 P
OAKDALE DUKE 9003P
HC TRES 7028

BW: 100 AWW: 721

	CE	BW	WW	YW	TM	SC	CW	REA	MARB	TSI
EPDs:	5.2	0.2	54	109	42	0.6	15	0.62	0.18	253.79

- HC Duke 9145, a Hebbert Charolais ET cow, has a record of 4 natural calves with a WW/105.5

Y 27

HC SLEDGE 1553

3/14/2021 • M965432 • P

LT SILVER LEDGE 4063 P
M852837

LT MOLLY 8011 PLD
BAR S RAPID FIRE 1484
HC EDGE 6017

LT LEDGER 0332 P
LT BLUEGRASS 4017 P
LT BRENDA 6120 PLD
LT SILVER DISTANCE 5342P
LT MOLLY 6049 PLD
TR PZC RAPID FIRE 9775 ET
BAR S SHURDOLL 6308
SKYMONT P UNLIMITED 0115
HC DUCE 7138

BW: 90 AWW: 622

	CE	BW	WW	YW	TM	SC	CW	REA	MARB	TSI
EPDs:	4.5	-0.7	41	89	36	0.7	15	0.54	0.16	237.19



Y 28

HC SLATE 1326

3/27/2021 • M962709 • P

HC BLUE ROCK 2403
M818336

LT-HC BLUE ROCK 0368 P

HC LEAD R 0120

M6 GRID MAKER 104 PET

HC GRID MAKER 4013
F1194740

HC EZ JACK 6157

LT BLUEGRASS 4017 P

LT BRENDA'S EASE 3055PLD

HC LEADER 8205

HC CHINOOK 7146

WCR SIR TRADITION 066

VCR MISS MAC IV 317

HC EZ 4346

HC CIG R 4070

BW: 98 AWW: 668

	CE	BW	WW	YW	TM	SC	CW	REA	MARB	TSI
EPDs:	5.2	0.1	59	105	55	0.9	15	0.62	0.24	250.77

• HC Grid Maker 4013 - Dam of Distinction

Y 29

HC CANYON 1329

4/2/2021 • M962712 • P

HC RIMROCK 4247
M851660

LT-HC BLUE ROCK 0368 P

HC LEADER 8145

HC SILVER SAND 1336

HC SILVER SAND 4049
F1192533

HC RIO 9020

LT BLUEGRASS 4017 P

LT BRENDA'S EASE 3055PLD

LT LEADER BOARD 6110 P

HC EZ TQ 6150

LT SILVER DISTANCE 5342P

HC BLEND 9023

LT RIO BRAVO 3181 P

HC CAD 1160

BW: 106 AWW: 665

	CE	BW	WW	YW	TM	SC	CW	REA	MARB	TSI
EPDs:	1.2	1	57	109	57	1.4	23	0.64	0.16	251.16

• HC Silver Sand 4049 - Dam of Distinction

Y 30

HC SLEDGE 1564

3/25/2021 • M965444 • P

LT SILVER LEDGE 4063 P
M852837

LT LEDGER 0332 P

LT MOLLY 8011 PLD

HCF UNCLE JESSE

HC JESSE 4077
F1192520

HC BLEND 0044

LT BLUEGRASS 4017 P

LT BRENDA 6120 PLD

LT SILVER DISTANCE 5342P

LT MOLLY 6049 PLD

TR MR FIRE WATER 5792RET

SCR SUPER LADY P4793

LT EASY BLEND 5125 PLD

HC CIG R 4070

BW: 87 AWW: 625

	CE	BW	WW	YW	TM	SC	CW	REA	MARB	TSI
EPDs:	1.2	-0.2	48	100	34	0.7	22	0.65	0.08	243.33



Lot 29

Y 31

HC SLEDGE 1559

3/29/2021 • M965439 • P

LT SILVER LEDGE 4063 P
M852837

LT LEDGER 0332 P

LT MOLLY 8011 PLD

HCF UNCLE JESSE

HC JESSE 4080
F1192521

HC LEADER 0057

LT BLUEGRASS 4017 P

LT BRENDA 6120 PLD

LT SILVER DISTANCE 5342P

LT MOLLY 6049 PLD

TR MR FIRE WATER 5792RET

SCR SUPER LADY P4793

LT LEADER BOARD 6110 P

HC MONTY 5031

BW: 93 AWW: 655

	CE	BW	WW	YW	TM	SC	CW	REA	MARB	TSI
EPDs:	4.3	-0.1	45	95	33	0.7	20	0.65	0.1	239.75

Y 32

HC LOYALIST 1332

3/2/2021 • M962713 • P

NGC LOYALIST 839F ET
EM930613

LT PATRIOT 4004 PLD

M&M MS NEW STANDARD 3517 PLDET

WC ROCKET 0021 P

HC ROCKET 4083
F1192514

HC STASH 0065

LT LEDGER 0332 P

LK MISS RIO 2119

M6 NEW STANDARD 842 P ET

M&M MS STEALTH 9509 PLD ET

WC-WCCC ROCKETFUEL 7109

WC BRENDA BEEBOP 8008

CCR HAMS STASHER R801 P

HC TQ 5062

BW: 90 AWW: 724

	CE	BW	WW	YW	TM	SC	CW	REA	MARB	TSI
EPDs:	6.7	-1.3	73	121	59	1.3	28	0.78	0.11	258.54

• Strong growth reflected in this bulls EPDs - WW/top 7%, YW/top 15%

Y 33

HC SLEDGE 1556

4/13/2021 • M965435 • P

LT SILVER LEDGE 4063 P
M852837

LT LEDGER 0332 P

LT MOLLY 8011 PLD

HCF UNCLE JESSE

HC JESSE 4088
F1192481

HC LEAD R 0088

LT BLUEGRASS 4017 P

LT BRENDA 6120 PLD

LT SILVER DISTANCE 5342P

LT MOLLY 6049 PLD

TR MR FIRE WATER 5792RET

SCR SUPER LADY P4793

HC LEADER 8205

HC TQ CAD 6112

BW: 93 AWW: 651

	CE	BW	WW	YW	TM	SC	CW	REA	MARB	TSI
EPDs:	3.8	0.1	46	94	35	0.7	20	0.73	0.08	237.77

• HC Lead R 0088 - Dam of Distinction

Y 34

HC SLEDGE 1563

3/25/2021 • M965443 • P

LT SILVER LEDGE 4063 P
M852837

LT LEDGER 0332 P

LT MOLLY 8011 PLD

WC ROCKET 0021 P

HC ROCKET 4090
F1192507

HC MORE BLEND 0110

LT BLUEGRASS 4017 P

LT BRENDA 6120 PLD

LT SILVER DISTANCE 5342P

LT MOLLY 6049 PLD

WC-WCCC ROCKETFUEL 7109

WC BRENDA BEEBOP 8008

HC HPF BLEND 888

HC JESSE 7079

BW: 98 AWW: 641

	CE	BW	WW	YW	TM	SC	CW	REA	MARB	TSI
EPDs:	6.3	0.2	46	95	36	1	23	0.71	0.1	238.66

Y 35

HC FUSION 1339

4/13/2021 • M962717 • P

EATONS WHITE FUSION 60065 PLD
EATONS WHITE THROTTLE 30094 P
EATONS MISS EXETER 41168
EATONS MISS WILSALL 31022 POLL
EATONS CINCH 00374
EATONS MISS WILSALL 01029 POLL
LT-HC BLUE ROCK 0368 P
LT BLUEGRASS 4017 P
LT BRENDA'S EASE 3055PLD
HC BLUE ROCK 4146
F1192420
HC MUSIC 1170
BROBERG'S V33
HC SPUR 9116

BW: 90 AWW: 700

	CE	BW	WW	YW	TM	SC	CW	REA	MARB	TSI
EPDs:	9	-2.4	65	122	60	0.9	18	0.59	0.2	267.52

- HC Blue Rock 4146 - Dam of Distinction

Y 36

HC KNIGHTED 1341

4/2/2021 • M962718 • P

WCR SIR KINGSBURY 116 P
WCR MISS POWEREDGE 9132 P
EATONS VISIONARY 2044 P
WCR MISS POWEREDGE 9132 P
WCR MS FIREWATER 127 P
TR MR FIREWATER 8600U
WCR MS PRINCE 939 P
BOX P PENDLETON 9022 P/S
LT BLUEGRASS 4017 P
BOX P LYDIA 7091 P
HC PENDLETON 4155
F1192415
HC LEAD R 1189
HC LEADER 8205
HC SILVER 9176

BW: 91 AWW: 573

	CE	BW	WW	YW	TM	SC	CW	REA	MARB	TSI
EPDs:	6.8	-2.3	44	93	50	0.7	15	0.51	0.06	239.27

- A pedigree stacked with sires who achieved Trait Leader status - Visionary 2044, Kingsbury 116, Firewater 8600U, Bluegrass 4017
- HC Silver 9176 - Dam of Distinction

Y 37

HC COMMISSIONED 1342

3/30/2021 • M962719 • P

HCR EQUITY 3123 PLD
HCR NETWORK 7017 PLD
MISS HCR RANDI 8410 P TW
HC COMMISSIONER 9557
M932706
HC MS CROSS COUNTRY 7219
LT LONG DISTANCE 9001 PLD
HC ASPEN 5190
CCR HAMS STASHER R801 P
HC LEADER 8111
HC RIVER 4163
F1192400
HC STASH 0372
HC LEADER 8111
HC LONG RANGE 2036
LT LONG DISTANCE 9001 PLD
HC EDGE 6003

BW: 94 AWW: 644

	CE	BW	WW	YW	TM	SC	CW	REA	MARB	TSI
EPDs:	4.5	-0.4	55	91	47	0.4	5	0.52	0.18	233.65

- Note the double influence of Long Distance 9001, a noted calving ease sire

Y 38

HC SLATE 1345

3/9/2021 • M962720 • P

LT-HC BLUE ROCK 0368 P
LT BLUEGRASS 4017 P
LT BRENDA'S EASE 3055PLD
HC BLUE ROCK 2403
M818336
HC LEAD R 0120
HC LEADER 8205
HC CHINOOK 7146
HC LONG RANGE 2409
LT LONG DISTANCE 9001 PLD
HC LEADER 0142
HC LONG RANGE 4184
F1192392
HC SPUR 2137
SCC SPUR 49S PLD
HC AMP 9173

BW: 89 AWW: 716

	CE	BW	WW	YW	TM	SC	CW	REA	MARB	TSI
EPDs:	8.4	-1.5	58	99	51	0.5	9	0.58	0.23	243.43

- HC Long Range 4184 records 3 bull calves with an average WW index of 109

Y 39

HC LOYALIST 1348

3/30/2020 • M962725 • P

LT PATRIOT 4004 PLD
LT LEDGER 0332 P
LK MISS RIO 2119
NGC LOYALIST 839F ET
EM930613
M&M MS NEW STANDARD 3517 PLDET
M6 NEW STANDARD 842 P ET
M&M MS STEALTH 9509 PLD ET
HC LONG RANGE 1395
LT LONG DISTANCE 9001 PLD
HC DUKE 9145
HC LONE RANGER 5001
F1212505
HC EDGE 6017
SKYMONT P UNLIMITED 0115
HC DUCE 7138

BW: 98 AWW: 644

	CE	BW	WW	YW	TM	SC	CW	REA	MARB	TSI
EPDs:	3.6	-0.7	63	117	59	1	27	0.67	0.2	260.55

- HC Edge 6017 - Dam of Distinction

Y 40

HC MOMENTUM 1349

3/12/2021 • M962721 • P

LT RUSHMORE 8060 PLD
LT RIO BRAVO 3181 P
LT BRENDA'S EASE 3055PLD
LT RUSHMORE 6033 PLD
M880332
LT AMANDA 4338 PLD
LT LONG DISTANCE 9001 PLD
LT AMANDA 6208 PLD
LT LONG DISTANCE 9001 PLD
HC STASHED 0144
HC LONG RANGE 5006
F1212509
HC CAD 6065
BALDRIDGE CADILLAC 74E
HC JES 1158

BW: 76 AWW: 598

	CE	BW	WW	YW	TM	SC	CW	REA	MARB	TSI
EPDs:	11.4	-4.4	48	93	54	1	17	0.61	0.13	241.82

- HC Long Range 5006 - Dam of Distinction

Y 41

HC KNIGHTED 1350

3/17/2021 • M962722 • P

WCR KINGSBURY 116 P
WCR MISS POWEREDGE 9132 P
WCR MS FIREWATER 127 P
TR MR FIREWATER 8600U
WCR MS PRINCE 939 P
HC LONG RANGE 2410
LT LONG DISTANCE 9001 PLD
HC STASHED 0144
HC LONG RANGE 5007
F1212510
HC EDGE E 6077
HC EDGE 4258
HC CIGAR 2043

BW: 93 AWW: 610

	CE	BW	WW	YW	TM	SC	CW	REA	MARB	TSI
EPDs:	7.7	-2	45	92	52	0.6	12	0.51	0.04	236.78

- HC Edge E 6077 - Diamond Dam of Distinction



Waylon and HC Ms Blue Rock 5114

Y 42

HC LOYALIST 1354

4/4/2021 • M962726 • P

NGC LOYALIST 839F ET
EM930613

LT PATRIOT 4004 PLD
M&M MS NEW STANDARD 3517 PLDET

HC LONG RANGE 5041
F1212536

LT LEDGER 0332 P
LK MISS RIO 2119

M6 NEW STANDARD 842 P ET
M&M MS STEALTH 9509 PLD ET

LT LONG DISTANCE 9001 PLD
HC STASHED 0144

HC CAD 5218
HC EASY 3135

BW: 105 AWW: 667

	CE	BW	WW	YW	TM	SC	CW	REA	MARB	TSI
EPDs:	0.7	1.4	64	112	55	1	23	0.66	0.14	250.88

- HC Easy 3135 - Dam of Distinction

Y 43

HC AGATE 1357

2/26/2021 • M962729 • P

LT-HC BLUE ROCK 0368 P
M791645

HC GRID MAKER 5045
F1212540

LT BLUEGRASS 4017 P

LT BRENDA'S EASE 3055PLD

M6 GRID MAKER 104 PET

HC SPUR 9073

LT ASSERTION 1277 P
LT PEARL'S BREEZE 2236 P

LT UNLIMITED EASE 9108
LT BRENDA 1014 PLD
WCR SIR TRADITION 066
VCR MISS MAC IV 317

SCC SPUR 49S PLD
HC MONTY 5003

BW: 93 AWW: 630

	CE	BW	WW	YW	TM	SC	CW	REA	MARB	TSI
EPDs:	6.8	-0.9	54	105	49	1	19	0.73	0.23	253.11

Y 44

HC COMMISSIONED 1358

3/29/2021 • M962730 • P

HC COMMISSIONER 9557
M932706

HC MS CROSS COUNTRY 7219

HC LONG RANGE 5046
F1212541

HC SPUR 9087

HCR EQUITY 3123 PLD
MISS HCR RANDI 8410 P TW

LT LONG DISTANCE 9001 PLD
HC ASPEN 5190

LT LONG DISTANCE 9001 PLD
HC STASHED 0144

SCC SPUR 49S PLD
HC CAD E 5054

BW: 83 AWW: 621

	CE	BW	WW	YW	TM	SC	CW	REA	MARB	TSI
EPDs:	6.8	-1.1	52	88	45	0.5	6	0.58	0.17	232.67



Lot 43

Y 45

HC KNIGHTED 1360

4/5/2021 • M962732 • P

WCR SIR KINGSBURY 7334 P
M896195

HC BLUE ROCK 5065
F1212557

WCR KINGSBURY 116 P

WCR MS FIREWATER 127 P

LT-HC BLUE ROCK 0368 P

HC WIND 0063

EATONS VISIONARY 2044 P
WCR MISS POWEREDGE 9132 P

TR MR FIREWATER 8600U
WCR MS PRINCE 939 P

LT BLUEGRASS 4017 P
LT BRENDA'S EASE 3055PLD

TR MR WYOMING WIND 5583R
HC CAD E 5054

BW: 100 AWW: 691

	CE	BW	WW	YW	TM	SC	CW	REA	MARB	TSI
EPDs:	4.9	-1.3	58	114	63	0.9	19	0.6	0.07	256.55

- HC Blue Rock 5065 - Dam of Distinction
- HC Wind 0063 - Diamond Dam of Distinction

Y 46

HC MOMENTUM 1363

3/17/2021 • M962735 • P

LT RUSHMORE 6033 PLD
M880332

HC PENDLETON 5072
F1212569

LT RUSHMORE 8060 PLD

LT AMANDA 4338 PLD

BOX P PENDLETON 9022 P/S

HC MORE BLEND 0111

LT RIO BRAVO 3181 P
LT BRENDA'S EASE 3055PLD

LT LONG DISTANCE 9001 PLD
LT AMANDA 6208 PLD
LT BLUEGRASS 4017 P
BOX P LYDIA 7091 P

HC HPF BLEND 888
HC EZTQ 7080

BW: 87 AWW: 709

	CE	BW	WW	YW	TM	SC	CW	REA	MARB	TSI
EPDs:	8.2	-2.6	65	114	64	1.3	25	0.63	0.13	255.62

- HC More Blend 0111 - Diamond Dam of Distinction

Y 47

HC KNIGHTED 1366

4/10/2021 • M962737 • P

WCR SIR KINGSBURY 7334 P
M896195

HC BLUE ROCK 5113
F1212602

WCR KINGSBURY 116 P

WCR MS FIREWATER 127 P

LT-HC BLUE ROCK 0368 P

HC LEADER 1086

EATONS VISIONARY 2044 P
WCR MISS POWEREDGE 9132 P

TR MR FIREWATER 8600U
WCR MS PRINCE 939 P

LT BLUEGRASS 4017 P
LT BRENDA'S EASE 3055PLD

LT LEADER BOARD 6110 P
HC JESSE 7085

BW: 82 AWW: 645

	CE	BW	WW	YW	TM	SC	CW	REA	MARB	TSI
EPDs:	9.4	-3.3	50	100	58	0.7	16	0.55	0.1	246.01

- HC Blue Rock 5113 - Dam of Distinction

Y 48

HC COMMISSIONED 1368

3/23/2021 • M962738 • P

HC COMMISSIONER 9557
M932706

HC BLUE ROCK 5116
F1212605

HCR EQUITY 3123 PLD
MISS HCR RANDI 8410 P TW

HC MS CROSS COUNTRY 7219

LT-HC BLUE ROCK 0368 P

HC SPUR 1096

LT LONG DISTANCE 9001 PLD
HC ASPEN 5190

LT BLUEGRASS 4017 P
LT BRENDA'S EASE 3055PLD

SCC SPUR 49S PLD
HC CHINOOK 7146

BW: 102 AWW: 664

	CE	BW	WW	YW	TM	SC	CW	REA	MARB	TSI
EPDs:	1.8	1.2	58	101	49	0.7	11	0.58	0.21	242.83

- HC Spur 1096 - Dam of Distinction

Y 49 HC WALKER 1370

3/15/2021 • M962740 • P

CCC MESCALITO 9038 P
M930975

WC MILESTONE 5223 P

WC BENELLI 2134 P ET
WC LADY BLUE 0506 P

WC CCC SWEETHEART 6166 P ET

CCC WC RESOURCE 417 P
BALDRIDGE SWEETHEART 7M
TR PZC RAPID FIRE 9775 ET
BAR S SHURDOLL 6308

HC BLAZE 5133
F1212620

BAR S RAPID FIRE 1484

HC LONG RANGE 1188

LT LONG DISTANCE 9001 PLD
HC AMP 9172

BW: 106 AWW: 663

	CE	BW	WW	YW	TM	SC	CW	REA	MARB	TSI
EPDs:	2.2	1.1	53	93	51	0.5	14	0.65	0.2	236.43

Y 50 HC LOYALIST 1372

3/9/2021 • M962741 • P

NGC LOYALIST 839F ET
EM930613

LT PATRIOT 4004 PLD

M&M MS NEW STANDARD 3517 PLDET

HC JESSE 5138
F1212625

HC UNCLE JESSE

HC PENDLETON 2024

LT LEDGER 0332 P
LK MISS RIO 2119

M6 NEW STANDARD 842 P ET
M&M MS STEALTH 9509 PLD ET
TR MR FIRE WATER 5792RET
SCR SUPER LADY P4793

BOX P PENDLETON 9022 P/S
HC EASY 4142

BW: 104 AWW: 672

	CE	BW	WW	YW	TM	SC	CW	REA	MARB	TSI
EPDs:	-0.7	1.8	62	113	55	0.9	28	0.71	0.09	251.35

- HC Easy 4142 - Dam of Distinction

Y 51 HC COMMISSIONED 1374

3/26/2021 • M962743 • P

HC COMMISSIONER 9557
M932076

HCR EQUITY 3123 PLD

HC MS CROSS COUNTRY 7219

HC BLAZE 5156
F1212641

BAR S RAPID FIRE 1484

HC SPUR 2091

HCR NETWORK 7017 PLD
MISS HCR RANDI 8410 P TW

LT LONG DISTANCE 9001 PLD
HC ASPEN 5190

TR PZC RAPID FIRE 9775 ET
BAR S SHURDOLL 6308

SCC SPUR 49S PLD
HC CAD 3 8084

BW: 91 AWW: 705

	CE	BW	WW	YW	TM	SC	CW	REA	MARB	TSI
EPDs:	2.4	0.4	58	97	52	0.5	5	0.55	0.17	238.86

- HC Blaze 5156 - Dam of Distinction

Y 52 HC LOYALIST 1375

4/10/2021 • M962744 • P

NGC LOYALIST 839F ET
EM930613

LT PATRIOT 4004 PLD

M&M MS NEW STANDARD 3517 PLDET

HC BLUE ROCK 5157
F1212642

LT-HC BLUE ROCK 0368 P

HC SPUR 2113

LT LEDGER 0332 P
LK MISS RIO 2119

M6 NEW STANDARD 842 P ET
M&M MS STEALTH 9509 PLD ET
LT BLUEGRASS 4017 P
LT BRENDA'S EASE 3055PLD

SCC SPUR 49S PLD
HC MONTY 9042

BW: 93 AWW: 609

	CE	BW	WW	YW	TM	SC	CW	REA	MARB	TSI
EPDs:	2	0.4	61	118	54	1.2	29	0.7	0.19	260.46

- Sire Loyalist 839's pedigree blends Patriot 4004 and New Standard 842, both with top ranking CW EPDs for the Charolais breed

Y 53 HC LOYALIST 1376

3/12/2021 • M962745 • P

NGC LOYALIST 839F ET
EM930613

M&M MS NEW STANDARD 3517 PLDET

EATONS TRUE BLOOD 30030 POLLED

HC ASPEN 5169
F1212654

HC LEAD R 3002

LT PATRIOT 4004 PLD

LT LEDGER 0332 P
LK MISS RIO 2119

M6 NEW STANDARD 842 P ET
M&M MS STEALTH 9509 PLD ET

LT BLUE BLOOD 1131 PLD
EATONS ASPEN 10548

HC LEADER 8205
HC EDGE 6028

BW: 104 AWW: 733

	CE	BW	WW	YW	TM	SC	CW	REA	MARB	TSI
EPDs:	-0.3	1.4	70	122	63	1	29	0.66	0.18	259.59

- HC Lead R 3002 - Dam of Distinction
- HC Edge 6028 - Diamond Dam of Distinction



Lot 53



Lot 54

Y 54 HC ARLINGTON 1377

3/12/2021 • M962929 • P

LT PATRIOT 4004 PLD
M852822

HC LONE RANGER 5170
F1212655

HC LEAD R 3007

LT LEDGER 0332 P

LK MISS RIO 2119

HC LONG RANGE 1395

LT BLUEGRASS 4017 P
LT BRENDA 6120 PLD

LK DISTANT RIO 900
LK MISS SILVER T 059

LT LONG DISTANCE 9001 PLD
HC DUKE 9145

HC LEADER 8205
HC EDGE E 6007

BW: 102 AWW: 680

	CE	BW	WW	YW	TM	SC	CW	REA	MARB	TSI
EPDs:	2.3	0	65	116	56	1	23	0.61	0.16	255.53

- Powerful maternal influence of Dams of Distinction - HC Lone Ranger 5170, HC Lead R 3007 and the foundational female HC Edge E 6007 - Diamond Dam of Distinction

Y 55

HC CANYON 1379

3/27/2021 • M962747 • S

HC RIMROCK 4247
M851660

LT-HC BLUE ROCK 0368 P

HC LEADER 8145

EATONS TRUE BLOOD 30030 POLLED

HC ASPEN 5172
F1212657

HC LONE RANGER 3015

LT BLUEGRASS 4017 P

LT BRENDA'S EASE 3055PLD

LT LEADER BOARD 6110 P

HC EZ TQ 6150

LT BLUE BLOOD 1131 PLD

EATONS ASPEN 10548

HC LONG RANGE 1395

HC JESSE 7095

BW: 90 AWW: 585

	CE	BW	WW	YW	TM	SC	CW	REA	MARB	TSI
EPDs:	5.2	-0.9	48	100	45	1.3	22	0.65	0.18	247.95

Y 56

HC AGATE 1381

3/21/2021 • M965428 • P

LT-HC BLUE ROCK 0368 P
M791645

LT BLUEGRASS 4017 P

LT BRENDA'S EASE 3055PLD

LT LONG DISTANCE 9001 PLD

HC LONG RANGE 5177
F1212661

HC BLUE 3032

LT ASSERTION 1277 P

LT PEARL'S BREEZE 2236 P

LT UNLIMITED EASE 9108

LT BRENDA 1014 PLD

LT SILVER DISTANCE 5342P

LT BELLE 7026 P

LT BLUE MOUNTAIN 1041 PLD

HC GM 8045

BW: 88 AWW: 629

	CE	BW	WW	YW	TM	SC	CW	REA	MARB	TSI
EPDs:	7.2	-1.9	53	99	52	0.8	14	0.6	0.22	246.66

• HC long Range 5177 - Dam of Distinction

Y 57

HC LOYALIST 1382

3/22/2021 • M962749 • P

NGC LOYALIST 839F ET
EM930613

LT PATRIOT 4004 PLD

M&M MS NEW STANDARD 3517 PLDET

HC LONG RANGE 1395

HC LONE RANGER 5183
F1212666

HC LEAD R 3056

LT LEDGER 0332 P

LK MISS RIO 2119

M6 NEW STANDARD 842 P ET

M&M MS STEALTH 9509 PLD ET

LT LONG DISTANCE 9001 PLD

HC DUKE 9145

HC LEADER 8205

HC RIO 9028

BW: 82 AWW: 640

	CE	BW	WW	YW	TM	SC	CW	REA	MARB	TSI
EPDs:	9.1	-3.5	64	117	58	1.1	30	0.75	0.18	261.6

• HC Rio 9028 - Dam of Distinction

Y 58

HC AGATE 1383

3/10/2021 • M962751 • P

LT-HC BLUE ROCK 0368 P
M791645

LT BLUEGRASS 4017 P

LT BRENDA'S EASE 3055PLD

HC LONG RANGE 1395

HC LONE RANGER 5187
F1212667

HC ROCKET 3062

LT ASSERTION 1277 P

LT PEARL'S BREEZE 2236 P

LT UNLIMITED EASE 9108

LT BRENDA 1014 PLD

LT LONG DISTANCE 9001 PLD

HC DUKE 9145

WC ROCKET 0021 P

HC CAD 3 9071

BW: 100 AWW: 694

	CE	BW	WW	YW	TM	SC	CW	REA	MARB	TSI
EPDs:	2.3	0.4	66	118	55	1.1	20	0.71	0.21	260.47

• HC Rocket 3062 - Dam of Distinction

Y 59

HC LOYALIST 1385

3/23/2021 • M962752 • P

NGC LOYALIST 839F ET
EM930613

LT PATRIOT 4004 PLD

M&M MS NEW STANDARD 3517 PLDET

HC BLUE ROCK 2403

HC BLUE STONE 5195
F1212675

HC ROCKET 3079

LT LEDGER 0332 P

LK MISS RIO 2119

M6 NEW STANDARD 842 P ET

M&M MS STEALTH 9509 PLD ET

LT-HC BLUE ROCK 0368 P

HC LEAD R 0120

WC ROCKET 0021 P

HC CARGO 9175

BW: 97 AWW: 650

	CE	BW	WW	YW	TM	SC	CW	REA	MARB	TSI
EPDs:	4.4	-0.1	66	116	59	1.2	27	0.69	0.2	256.82

• HC Blue Stone 5195 has weaned 5 calves with average WW index of 104

Y 60

HC LOYALIST 1386

3/25/2021 • M962753 • P

NGC LOYALIST 839F ET
EM930613

LT PATRIOT 4004 PLD

M&M MS NEW STANDARD 3517 PLDET

HC LONG RANGE 1395

HC LONE RANGER 5200
F1212678

HC ROCKET 3088

LT LEDGER 0332 P

LK MISS RIO 2119

M6 NEW STANDARD 842 P ET

M&M MS STEALTH 9509 PLD ET

LT LONG DISTANCE 9001 PLD

HC DUKE 9145

WC ROCKET 0021 P

HC SPUR 0026

BW: 82 AWW: 656

	CE	BW	WW	YW	TM	SC	CW	REA	MARB	TSI
EPDs:	9	-2.9	61	112	54	1.2	28	0.75	0.17	257.2

Y 61

HC LOYALIST 1387

3/15/2021 • M962754 • P

NGC LOYALIST 839F ET
EM930613

LT PATRIOT 4004 PLD

M&M MS NEW STANDARD 3517 PLDET

HC BLUE ROCK 2403

HC BLUE STONE 5212
F1212685

HC LONE RANGER 3135

LT LEDGER 0332 P

LK MISS RIO 2119

M6 NEW STANDARD 842 P ET

M&M MS STEALTH 9509 PLD ET

LT-HC BLUE ROCK 0368 P

HC LEAD R 0120

HC LONG RANGE 1395

HC NASHVILLE 1056

BW: 99 AWW: 686

	CE	BW	WW	YW	TM	SC	CW	REA	MARB	TSI
EPDs:	0.9	0.3	68	123	60	1.1	29	0.69	0.21	263.98

• HC Lone Ranger 3135 - Dam of Distinction



Dillon and his pony, Batman

Y 62 HC LOYALIST 1388

3/18/2021 • M962755 • P

NGC LOYALIST 839F ET
EM930613

LT PATRIOT 4004 PLD
M&M MS NEW STANDARD 3517 PLDET

OAKDALE DUKE 9003P

HC DUKE 5214
F1212686

HC LONG RANGE 3146

LT LEDGER 0332 P
LK MISS RIO 2119

M6 NEW STANDARD 842 P ET
M&M MS STEALTH 9509 PLD ET

VCR SIR DUKE 135 PLD
MISS VELVEETA JANE 630

LT LONG DISTANCE 9001 PLD
HC SPUR 1091

BW: 104 AWW: 691

	CE	BW	WW	YW	TM	SC	CW	REA	MARB	TSI
EPDs:	1.8	0.6	66	119	60	1	21	0.67	0.14	258.86

Y 63 HC COMMISSIONED 1390

3/22/2021 • M962756 • P

HC COMMISSIONER 9557
M932706

HCR EQUITY 3123 PLD
HC MS CROSS COUNTRY 7219

HC RIMROCK 4247

HC RIMROCK 6013
F1230597

HC RIO 9004

HCR NETWORK 7017 PLD
MISS HCR RANDI 8410 P TW

LT LONG DISTANCE 9001 PLD
HC ASPEN 5190

LT-HC BLUE ROCK 0368 P
HC LEADER 8145

LT RIO BRAVO 3181 P
HC MONTY 0014

BW: 80 AWW: 574

	CE	BW	WW	YW	TM	SC	CW	REA	MARB	TSI
EPDs:	10.8	-3.7	44	86	44	0.9	17	0.61	0.22	236.85

• A lower birthweight HC Commissioner 9557 son with top 15% ranking for BW

Y 64 HC COMMISSIONED 1392

3/27/2021 • M962757 • P

HC COMMISSIONER 9557
M932706

HCR EQUITY 3123 PLD
HC MS CROSS COUNTRY 7219

LT-HC BLUE ROCK 0368 P

HC BLUE ROCK 6027
F1230608

HC BLEND 0015

HCR NETWORK 7017 PLD
MISS HCR RANDI 8410 P TW

LT LONG DISTANCE 9001 PLD
HC ASPEN 5190

LT BLUEGRASS 4017 P
LT BRENDA'S EASE 3055PLD

LT EASY BLEND 5125 PLD
HC CAD 2001

BW: 92 AWW: 671

	CE	BW	WW	YW	TM	SC	CW	REA	MARB	TSI
EPDs:	3.7	-0.5	57	99	49	0.7	14	0.56	0.2	242.2



Lot 64

Y 65 HC WALKER 1394

3/2/2021 • M962758 • P

CCC MESCALITO 9038 P
M930975

WC MILESTONE 5223 P

WC CCC SWEETHEART 6166 P ET

LT SILVER LEDGE 4063 P

HC SLEDGE 6037
F1230617

HC STASH 0061

WC BENELLI 2134 P ET
WC LADY BLUE 0506 P

CCC WC RESOURCE 417 P
BALDRIDGE SWEETHEART 7M

LT LEDGER 0332 P
LT MOLLY 8011 PLD

CCR HAMS STASHER R801 P
HC CAD 5040

BW: 100 AWW: 616

	CE	BW	WW	YW	TM	SC	CW	REA	MARB	TSI
EPDs:	2	1.7	52	100	47	0.8	25	0.78	0.22	244.27

Y 66 HC LOYALIST 1395

3/30/2021 • M962759 • P

NGC LOYALIST 839F ET
EM930613

LT PATRIOT 4004 PLD
M&M MS NEW STANDARD 3517 PLDET

HC FREE RANGE 6041
F1230620

HC LEAD R 0084

LT LEDGER 0332 P
LK MISS RIO 2119

M6 NEW STANDARD 842 P ET
M&M MS STEALTH 9509 PLD ET

LT LONG DISTANCE 9001 PLD
HC DUKE 9145

HC LEADER 8205
HC EDGE E 6077

BW: 106 AWW: 681

	CE	BW	WW	YW	TM	SC	CW	REA	MARB	TSI
EPDs:	0.5	1.2	69	121	62	1.1	29	0.74	0.14	259.2

• HC Edge E 6077 - Dam of Distinction

Y 67 HC KNIGHTED 1396

3/15/2021 • M962760 • P

WCR SIR KINGSBURY 7334 P
M896195

WCR MS FIREWATER 127 P

HC RIMROCK 4247

HC LEAD 0138

EATONS VISIONARY 2044 P
WCR MISS POWEREDGE 9132 P

TR MR FIREWATER 8600U
WCR MS PRINCE 939 P

LT-HC BLUE ROCK 0368 P
HC LEADER 8145

HC LEADER 8381
HC CAD 3 8077

BW: 99 AWW: 651

	CE	BW	WW	YW	TM	SC	CW	REA	MARB	TSI
EPDs:	0.6	0.4	50	104	50	0.8	18	0.53	0.08	247.06

Y 68 HC LOYALIST 1399

3/12/2021 • M962761 • P

NGC LOYALIST 839F ET
EM930613

LT PATRIOT 4004 PLD
M&M MS NEW STANDARD 3517 PLDET

HC PENDLETON 6068
F1230642

HC LEADER 1080

LT LEDGER 0332 P
LK MISS RIO 2119

M6 NEW STANDARD 842 P ET
M&M MS STEALTH 9509 PLD ET

LT BLUEGRASS 4017 P
BOX P LYDIA 7091 P

BOX P PENDLETON 9022 P/S

LT LEADER BOARD 6110 P
HC TQ 7043

BW: 77 AWW: 634

	CE	BW	WW	YW	TM	SC	CW	REA	MARB	TSI
EPDs:	9.4	-2.6	61	112	54	1.1	28	0.63	0.14	254.56

Y 69

HC HICKOK 1401

3/12/2021 • M962762 • P

WC INFERNO 6561 P
CCC 2B GUNSLINGER 9030 P
M930782

M&M MS SLEEP EASY 4518 PLD
M6 SLEEP EASY 734 PLD
M&M MS WIND STORM 2030 PLD

BAR S RAPID FIRE 1484
TR PZC RAPID FIRE 9775 ET
BAR S SHURDOLL 6308

HC BLAZE 6074
F1230646

HC SPUR 1096
SCC SPUR 49S PLD
HC CHINOOK 7146

BW: 87 AWW: 556

	CE	BW	WW	YW	TM	SC	CW	REA	MARB	TSI
EPDs:	8.4	-1.7	53	97	54	1	28	0.81	0.14	242.42

• HC Spur 1096 - Dam of Distinction

Y 70

HC LOYALIST 1550

3/13/2021 • M962822 • P

NGC LOYALIST 839F ET
EM930613

M&M MS NEW STANDARD 3517 PLDET
M6 NEW STANDARD 842 P ET
M&M MS STEALTH 9509 PLD ET

HC BLUE ROCK 2403
LT-HC BLUE ROCK 0368 P
HC LEAD R 0120

HC BLUE STONE 6122
F1230682

HC LONE RANGER 3022
HC LONG RANGE 1395
HC MONTY 8005

BW: 75 AWW: 681

	CE	BW	WW	YW	TM	SC	CW	REA	MARB	TSI
EPDs:	10.8	-3.9	65	118	58	1.1	29	0.64	0.21	263.85

• A Loyalist 839 son with an outstanding Birth to Weaning spread. Note the BW EPD which ranks in the breed's top 6%

Y 71

HC LOYALIST 1409

3/18/2021 • M962764 • S

NGC LOYALIST 839F ET
EM930613

M&M MS NEW STANDARD 3517 PLDET
M6 NEW STANDARD 842 P ET
M&M MS STEALTH 9509 PLD ET

HC BLUE ROCK 2403
LT-HC BLUE ROCK 0368 P
HC LEAD R 0120

HC BLUE STONE 6133
F1230690

HC PENDLETON 3060
BOX P PENDLETON 9022 P/S
HC CARGO 9065

BW: 89 AWW: 614

	CE	BW	WW	YW	TM	SC	CW	REA	MARB	TSI
EPDs:	7.1	-1.5	59	111	53	1.2	28	0.65	0.2	255.62

• HC Cargo 9065 - Dam of Distinction

Y 72

HC KNIGHTED 1410

3/26/2021 • M962765 • P

WCR SIR KINGSBURY 7334 P
M893195

WCR MS FIREWATER 127 P
TR MR FIREWATER 8600U
WCR MS PRINCE 939 P

HC BLUE ROCK 2403
LT-HC BLUE ROCK 0368 P
HC LEAD R 0120

HC BLUE STONE 6135
F1230692

HC ROCKET 3063
WC ROCKET 0021 P
HC SPUR 9076

BW: 78 AWW: 610

	CE	BW	WW	YW	TM	SC	CW	REA	MARB	TSI
EPDs:	12.4	-4.7	46	95	50	0.8	15	0.58	0.12	244.9

• Sir Kingsbury 7334 sired bull that ranks in the top 6%/CE and top 3%/BW

Y 73

HC LOYALIST 1411

4/5/2021 • M962766 • P

NGC LOYALIST 839F ET
EM930613

M&M MS NEW STANDARD 3517 PLDET
M6 NEW STANDARD 842 P ET
M&M MS STEALTH 9509 PLD ET

HC PENDLETON 3334
BOX P PENDLETON 9022 P/S
HC MORE BLEND 0110

HC SMOOTH BLEND 6159
F1230706

HC GRID MAKER 3163
M6 GRID MAKER 104 PET
HC SILVER 1168

BW: 82 AWW: 678

	CE	BW	WW	YW	TM	SC	CW	REA	MARB	TSI
EPDs:	10.7	-3.5	62	113	60	1.1	30	0.71	0.14	258.39

Y 74

HC LOYALIST 1412

3/11/2021 • M962767 • P

NGC LOYALIST 839F ET
EM930613

M&M MS NEW STANDARD 3517 PLDET
M6 NEW STANDARD 842 P ET
M&M MS STEALTH 9509 PLD ET

HCR EQUITY 3123 PLD
HCR NETWORK 7017 PLD
MISS HCR RANDI 8410 P TW

HC EQUITY 6177
F1230717

HC ROCKET 4067
WC ROCKET 0021 P
HC LEADER 0005

BW: 107 AWW: 773

	CE	BW	WW	YW	TM	SC	CW	REA	MARB	TSI
EPDs:	-0.5	1.8	75	127	62	1.1	28	0.73	0.17	262.46

Y 75

HC ARLINGTON 1414

3/21/2021 • M962931 • P

LT PATRIOT 4004 PLD
M852822

LK MISS RIO 2119
LT LEDGER 0332 P
LT BRENDA 6120 PLD

HC FREE RANGE 6191
F1230725

HC FREE RANGE 4201 ET
LK DISTANT RIO 900
LK MISS SILVER T 059
LT LONG DISTANCE 9001 PLD
HC DUKE 9145

HC BLUE ROCK 4111
LT-HC BLUE ROCK 0368 P
HC PENDLETON 1027

BW: 103 AWW: 661

	CE	BW	WW	YW	TM	SC	CW	REA	MARB	TSI
EPDs:	-0.1	0.4	63	118	55	1.1	26	0.63	0.14	258.08



Lacy and Dillon at the 2022 National Charolais Sale

Y 76

HC ARLINGTON 1415

3/15/2021 • M962932 • P

LT PATRIOT 4004 PLD
M852822

LT LEDGER 0332 P

LK MISS RIO 2119

HC SILVER SAND 1336

HC BLUE ROCK 4117

LT BLUEGRASS 4017 P
LT BRENDA 6120 PLD

LK DISTANT RIO 900
LK MISS SILVER T 059
LT SILVER DISTANCE 5342P
HC BLEND 9023

LT-HC BLUE ROCK 0368 P
HC LEADER 1051

BW: 91 AWW: 678

	CE	BW	WW	YW	TM	SC	CW	REA	MARB	TSI
EPDs:	5.6	-1.5	61	110	57	0.9	23	0.51	0.14	250.54

- HC Leader 1051 - Dam of Distinction



A powerful, proven pedigree with sires Bluegrass 4017, Leader 0332, Silver Distance 5342, Long Distance 9001 and Easy Pro 1158

Lot 76

Y 77

HC LOYALIST 1416

3/11/2021 • M962768 • P

NGC LOYALIST 839F ET
EM930613

LT PATRIOT 4004 PLD

M&M MS NEW STANDARD 3517 PLDET

HC FREE RANGE 6193
F1230727

HC FREE RANGE 4201 ET

HC PENDLETON 4119

LT LEDGER 0332 P
LK MISS RIO 2119

M6 NEW STANDARD 842 P ET
M&M MS STEALTH 9509 PLD ET
LT LONG DISTANCE 9001 PLD
HC DUKE 9145

BOX P PENDLETON 9022 P/S
HC LEADER 1057

BW: 103 AWW: 707

	CE	BW	WW	YW	TM	SC	CW	REA	MARB	TSI
EPDs:	0.5	1.1	72	127	62	1.1	29	0.7	0.16	265.33

- Lot 77 has EPDs ranking in the top 7% for WW/YW



Lot 77

Y 78

HC LOYALIST 1420

3/19/2021 • M962771 • P

NGC LOYALIST 839F ET
EM930613

LT PATRIOT 4004 PLD

M&M MS NEW STANDARD 3517 PLDET

WR WRANGLER W601

HC WRANGLER 6209
F1230741

HC LONE RANGER 4180

LT LEDGER 0332 P
LK MISS RIO 2119

M6 NEW STANDARD 842 P ET
M&M MS STEALTH 9509 PLD ET

CMF 192 WRANGLER 256
WR MISS PRINCESS T629

HC LONG RANGE 1395
HC MORE BLEND 2118

BW: 87 AWW: 661

	CE	BW	WW	YW	TM	SC	CW	REA	MARB	TSI
EPDs:	7.5	-2	72	125	61	1.2	30	0.74	0.14	264.97

- Strong performance EPDs -WW/top 6% and YW/top 9% ranking
- HC Lone Ranger 4180 - Dam of Distinction



Lot 78

Y 79

HC WALKER 1421

3/12/2021 • M962772 • P

CCC MESCALITO 9038 P
M930975

WC MILESTONE 5223 P

WC CCC SWEETHEART 6166 P ET

HC EQUITY 6214
F1230745

HCR EQUITY 3123 PLD

HC ROCKET 4043

WC BENELLI 2134 P ET
WC LADY BLUE 0506 P

CCC WC RESOURCE 417 P
BALDRIDGE SWEETHEART 7M
HCR NETWORK 7017 PLD
MISS HCR RANDI 8410 P TW

WC ROCKET 0021 P
HC SILVER 8136

BW: 98 AWW: 680

	CE	BW	WW	YW	TM	SC	CW	REA	MARB	TSI
EPDs:	5.3	0.3	56	101	55	0.8	21	0.74	0.23	245.3

- HC Equity 6214 - Dam of Distinction



Reference Sire - NGC Loyalist 839

Y 80

HC BERETTA 1552

3/13/2021 • M965431 • P

DCR MR SILVER GUN F63
M916764

WCF MR SILVER GUN 467
DCR MS 8141 DUKE C111

HC MS FIRST HAND 7005
F1252055

WR TOP HAND C631
HC GRID MAKER 9039

IQCR SILVER GUN Y31P
WCF MISS FASTTRACK 012

WCR SIR DUKE 8141 P
DCR MS Y436 MAGIC GIRL A231
LT LEDGER 0332 P
WR MISS PRINCESS T629

M6 GRID MAKER 104 PET
HC FASTTRACK 3035

BW: 102 AWW: 695

	CE	BW	WW	YW	TM	SC	CW	REA	MARB	TSI
EPDs:	0.7	2.6	56	107	54	1.3	29	0.71	0.22	250.82

• HC Grid Maker 9039 - Dam of Distinction



Lot 80

Y 81

HC BERETTA 1423

3/26/2021 • M962773 • P

DCR MR SILVER GUN F63
M916764

WCF MR SILVER GUN 467
DCR MS 8141 DUKE C111

HC MS ROUND UP 7041
F1251825

HC PENDLETON 3334
HC LEADER 1086

IQCR SILVER GUN Y31P
WCF MISS FASTTRACK 012

WCR SIR DUKE 8141 P
DCR MS Y436 MAGIC GIRL A231
BOX P PENDLETON 9022 P/S
HC MORE BLEND 0110

LT LEADER BOARD 6110 P
HC JESSE 7085

BW: 101 AWW: 668

	CE	BW	WW	YW	TM	SC	CW	REA	MARB	TSI
EPDs:	5.5	0.8	53	97	58	1.3	24	0.75	0.14	240.91

• HC Round Up 7041 - Dam of Distinction

Y 82

HC ROYAL 1426

3/19/2021 • M962775 • P

WCR SIR KINGSBURY 883 P
M913936

WCR KINGSBURY 116 P
WCR MS FIREWATER 6360 P

HC MS EASY PICK 7086
F1251894

SS LONG DISTANCE 501
HC LEAD R 3020

EATONS VISIONARY 2044 P
WCR MISS POWEREDGE 9132 P

TR MR FIREWATER 8600U
WCR MS BIG JIM 307 P
LT LONG DISTANCE 9001 PLD
HC GRID MAKER 6034

HC LEADER 8205
HC UNLIMITED 7153

BW: 94 AWW: 660

	CE	BW	WW	YW	TM	SC	CW	REA	MARB	TSI
EPDs:	4.6	-1.6	65	107	60	0.6	23	0.67	0.13	248.44

Y 83

HC BERETTA 1427

3/18/2021 • M965446 • P

DCR MR SILVER GUN F63
M916764

WCF MR SILVER GUN 467
DCR MS 8141 DUKE C111

HC MS CANYON 7088
F1251896

HC RIMROCK 4247
HC LONE RANGER 3026

IQCR SILVER GUN Y31P
WCF MISS FASTTRACK 012

WCR SIR DUKE 8141 P
DCR MS Y436 MAGIC GIRL A231
LT-HC BLUE ROCK 0368 P
HC LEADER 8145

HC LONG RANGE 1395
HC CADE 8026

BW: 100 AWW: 670

	CE	BW	WW	YW	TM	SC	CW	REA	MARB	TSI
EPDs:	0.5	1.6	56	104	57	1.5	28	0.84	0.22	248.99

Y 84

HC ROYAL 1429

3/29/2021 • M962778 • P

WCR SIR KINGSBURY 883 P
M913936

WCR KINGSBURY 116 P
WCR MS FIREWATER 6360 P

HC MS ROUND UP 7097
F1251904

HC PENDLETON 3334
HC ROCKET 3070

EATONS VISIONARY 2044 P
WCR MISS POWEREDGE 9132 P

TR MR FIREWATER 8600U
WCR MS BIG JIM 307 P
BOX P PENDLETON 9022 P/S
HC MORE BLEND 0110

WC ROCKET 0021 P
HC LEADER 9134

BW: 103 AWW: 690

	CE	BW	WW	YW	TM	SC	CW	REA	MARB	TSI
EPDs:	0.1	0.9	68	113	59	1	24	0.57	0.1	248.97

Y 85

HC BERETTA 1440

3/2/2021 • M965446 • P

DCR MR SILVER GUN F63
M916764

WCF MR SILVER GUN 467
DCR MS 8141 DUKE C111

HC MS FREE RIDE 7177
F1252013

HC FREE RANGE 4201 ET
HC GRID MAKER 5048

IQCR SILVER GUN Y31P
WCF MISS FASTTRACK 012

WCR SIR DUKE 8141 P
DCR MS Y436 MAGIC GIRL A231
LT LONG DISTANCE 9001 PLD
HC DUKE 9145

M6 GRID MAKER 104 PET
HC SPUR 9113

BW: 100 AWW: 671

	CE	BW	WW	YW	TM	SC	CW	REA	MARB	TSI
EPDs:	1.3	1.5	65	119	64	1.4	31	0.89	0.24	263.45

• HC Grid Maker 5048 - Dam of Distinction

Y 86

HC ROYAL 1444

3/17/2021 • M962782 • P

WCR SIR KINGSBURY 883 P
M913936

WCR KINGSBURY 116 P
WCR MS FIREWATER 6360 P

HC MS EXPLORER 7189
F1252023

HC COLUMBUS 3405
HC BLAZE 5074

EATONS VISIONARY 2044 P
WCR MISS POWEREDGE 9132 P

TR MR FIREWATER 8600U
WCR MS BIG JIM 307 P
BROBERG'S COLUMBUS X142
HC LONG RANGE 1182

BAR S RAPID FIRE 1484
HC MORE BLEND 0122

BW: 88 AWW: 681

	CE	BW	WW	YW	TM	SC	CW	REA	MARB	TSI
EPDs:	6.2	-2.1	66	113	60	1	23	0.57	0.11	254.09

Y 87

HC BERETTA 1446

3/23/2021 • M962821 • P

DCR MR SILVER GUN F63
M916764

WCF MR SILVER GUN 467

DCR MS 8141 DUKE C111

LT LONG DISTANCE 9001 PLD

HC MS CROSS COUNTRY 7193
F1252027

HC BLUE ROCK 5093

IQCR SILVER GUN Y31P
WCF MISS FASTTRACK 012

WCR SIR DUKE 8141 P
DCR MS Y436 MAGIC GIRL A231
LT SILVER DISTANCE 5342P
LT BELLE 7026 P

LT-HC BLUE ROCK 0368 P
HC SPUR 1024

BW: 101 AWW: 650

	CE	BW	WW	YW	TM	SC	CW	REA	MARB	TSI
EPDs:	3.8	1	56	101	57	1	17	0.7	0.2	245.63

Y 88

HC BERETTA 1557

3/29/2021 • M965436 • P

DCR MR SILVER GUN F63
M916764

WCF MR SILVER GUN 467

DCR MS 8141 DUKE C111

HCR EQUITY 3123 PLD
7205

HC MS COMMISSIONER
F1252036

HC PENDLETON 5134

IQCR SILVER GUN Y31P
WCF MISS FASTTRACK 012

WCR SIR DUKE 8141 P
DCR MS Y436 MAGIC GIRL A231
HCR NETWORK 7017 PLD
MISS HCR RANDI 8410 P TW

BOX P PENDLETON 9022 P/S
HC LEAD R 1189

BW: 86 AWW: 730

	CE	BW	WW	YW	TM	SC	CW	REA	MARB	TSI
EPDs:	0.7	0.8	61	110	57	1.3	23	0.71	0.2	253.49

Y 89

HC BERETTA 1449

3/16/2021 • M962784 • P

DCR MR SILVER GUN F63
M916764

WCF MR SILVER GUN 467

DCR MS 8141 DUKE C111

HC SILVER SAND 1336

HC MS SS BLENDED 7211
F1252041

HC BLUE ROCK 5157

IQCR SILVER GUN Y31P
WCF MISS FASTTRACK 012

WCR SIR DUKE 8141 P
DCR MS Y436 MAGIC GIRL A231
LT SILVER DISTANCE 5342P
HC BLEND 9023

LT-HC BLUE ROCK 0368 P
HC SPUR 2113

BW: 84 AWW: 659

	CE	BW	WW	YW	TM	SC	CW	REA	MARB	TSI
EPDs:	7.2	-1.3	60	114	58	1.3	29	0.85	0.2	261.42



Lot 89

Y 90

HC ROYAL 1451

3/8/2021 • M962785 • P

WCR SIR KINGSBURY 883 P
M913936

WCR KINGSBURY 116 P

WCR MS FIREWATER 6360 P

LT LONG DISTANCE 9001 PLD

HC MS CROSS COUNTRY 7219
F1252047

POLLED

HC ASPEN 5190

EATONS VISIONARY 2044 P
WCR MISS POWEREDGE 9132 P

TR MR FIREWATER 8600U
WCR MS BIG JIM 307 P
LT SILVER DISTANCE 5342P
LT BELLE 7026 P

EATONS TRUE BLOOD 30030
HC LEAD R 3066

BW: 96 AWW: 629

	CE	BW	WW	YW	TM	SC	CW	REA	MARB	TSI
EPDs:	3.5	-1.1	58	99	52	0.5	15	0.52	0.16	240.94

Y 91

HC BERETTA 1554

2/28/2021 • M965433 • P

DCR MR SILVER GUN F63
M916764

WCF MR SILVER GUN 467

DCR MS 8141 DUKE C111

HCR EQUITY 3123 PLD
7224

HC MS COMMISSIONER
F1252052

HC DUKE 5214

IQCR SILVER GUN Y31P
WCF MISS FASTTRACK 012

WCR SIR DUKE 8141 P
DCR MS Y436 MAGIC GIRL A231
HCR NETWORK 7017 PLD
MISS HCR RANDI 8410 P TW

OAKDALE DUKE 9003P
HC LONG RANGE 3146

BW: 80 AWW: 635

	CE	BW	WW	YW	TM	SC	CW	REA	MARB	TSI
EPDs:	3.9	-1.1	53	101	52	1.3	23	0.8	0.27	251.94

Y 92

HC FRANCHISE 1452

3/28/2021 • M962786 • P

HC LRC FRANCHISE 8778 ET
EM934389

LT LEDGER 0332 P

M6 MS 761 NANCY 6100 P ET

RBM FARGO Y111

HC MS FARGO 8015
F1267816

HC NASHVILLE 1033

LT BLUEGRASS 4017 P
LT BRENDA 6120 PLD

WCR SIR DUKE 761
M6 MS H45 NANCY 382 ET
SPARROWS FARGO 811U
HC RHINESTONE 5100

BROBERG'S V41
HC PAUL 4065

BW: 85 AWW: 646

	CE	BW	WW	YW	TM	SC	CW	REA	MARB	TSI
EPDs:	6.2	-0.1	62	112	52	1	26	0.68	0.09	250.45

Y 93

HC MOMENTUM 1460

3/20/2021 • M962790 • P

LT RUSHMORE 6033 PLD
M880332

LT RUSHMORE 8060 PLD

LT AMANDA 4338 PLD

WR TOP HAND C631

HC MS FIRST HAND 8055
F1267456

HC PENDLETON 3096

LT RIO BRAVO 3181 P
LT BRENDA'S EASE 3055PLD

LT LONG DISTANCE 9001 PLD
LT AMANDA 6208 PLD
LT LEDGER 0332 P
WR MISS PRINCESS T629

BOX P PENDLETON 9022 P/S
HC STASH 0061

BW: 93 AWW: 708

	CE	BW	WW	YW	TM	SC	CW	REA	MARB	TSI
EPDs:	2.4	-0.2	66	119	61	1.4	25	0.69	0.16	260.04

Y 94 HC MOMENTUM 1461

3/31/2021 • M962791 • P

LT RUSHMORE 6033 PLD M880332
 LT RUSHMORE 8060 PLD
 LT AMANDA 4338 PLD
 WR TOP HAND C631
 HC MS FIRST HAND 8057 F1267458
 HC GRID MAKER 3130

LT RIO BRAVO 3181 P
 LT BRENDA'S EASE 3055PLD
 LT LONG DISTANCE 9001 PLD
 LT AMANDA 6208 PLD
 LT LEDGER 0332 P
 WR MISS PRINCESS T629
 M6 GRID MAKER 104 PET
 HC BLUE VALUE 1049

BW: 88 AWW: 634

	CE	BW	WW	YW	TM	SC	CW	REA	MARB	TSI
EPDs:	4.6	-1.1	60	111	60	1.3	25	0.72	0.18	255.31

Y 95 HC MOMENTUM 1466

3/22/2021 • M962793 • P

LT RUSHMORE 6033 PLD M880332
 LT RUSHMORE 8060 PLD
 LT AMANDA 4338 PLD
 NGC CLASSIC 624D ET
 HC MS CLASSIC 8088 F1267487
 HC PENDLETON 4151

LT RIO BRAVO 3181 P
 LT BRENDA'S EASE 3055PLD
 LT LONG DISTANCE 9001 PLD
 LT AMANDA 6208 PLD
 LT LEDGER 0332 P
 M6 MS 761 NANCY 6100 P ET
 BOX P PENDLETON 9022 P/S
 HC LEAD R 1184

BW: 102 AWW: 649

	CE	BW	WW	YW	TM	SC	CW	REA	MARB	TSI
EPDs:	-1.1	2.2	63	118	56	1.3	25	0.63	0.16	257.73

Y 96 HC MOMENTUM 1467

3/30/2021 • M962794 • P

LT RUSHMORE 6033 PLD M880332
 LT RUSHMORE 8060 PLD
 LT AMANDA 4338 PLD
 LT SILVER LEDGE 4063 P
 HC MS SLEDGE 8089 F1267488
 HC PENDLETON 4152

LT RIO BRAVO 3181 P
 LT BRENDA'S EASE 3055PLD
 LT LONG DISTANCE 9001 PLD
 LT AMANDA 6208 PLD
 LT LEDGER 0332 P
 LT MOLLY 8011 PLD
 BOX P PENDLETON 9022 P/S
 HC DUKE 1185

BW: 78 AWW: 675

	CE	BW	WW	YW	TM	SC	CW	REA	MARB	TSI
EPDs:	8.1	-2.8	63	121	59	1.3	25	0.64	0.14	265.42

• HC Duke 1185 - Dam of Distinction



Lot 95

Y 97 HC MOMENTUM 1469

3/26/2021 • M962795 • P

LT RUSHMORE 6033 PLD M880332
 LT RUSHMORE 8060 PLD
 LT AMANDA 4338 PLD
 LT SILVER LEDGE 4063 P
 HC MS SLEDGE 8092 F1267491
 HC LONE RANGER 4158

LT RIO BRAVO 3181 P
 LT BRENDA'S EASE 3055PLD
 LT LONG DISTANCE 9001 PLD
 LT AMANDA 6208 PLD
 LT LEDGER 0332 P
 LT MOLLY 8011 PLD
 HC LONG RANGE 1395
 HC RIDGE 2006

BW: 98 AWW: 649

	CE	BW	WW	YW	TM	SC	CW	REA	MARB	TSI
EPDs:	1.9	0.2	62	121	57	1.2	26	0.68	0.16	264.08

• HC Ridge 2006 - Dam of Distinction

Y 98 HC MOMENTUM 1470

3/28/2021 • M962796 • P

LT RUSHMORE 6033 PLD M880332
 LT RUSHMORE 8060 PLD
 LT AMANDA 4338 PLD
 LT SILVER LEDGE 4063 P
 HC MS SLEDGE 8095 F1267493
 HC LONG RANGE 4166

LT RIO BRAVO 3181 P
 LT BRENDA'S EASE 3055PLD
 LT LONG DISTANCE 9001 PLD
 LT AMANDA 6208 PLD
 LT LEDGER 0332 P
 LT MOLLY 8011 PLD
 LT LONG DISTANCE 9001 PLD
 HC GRID MAKER 2058

BW: 90 AWW: 725

	CE	BW	WW	YW	TM	SC	CW	REA	MARB	TSI
EPDs:	6.1	-1.4	65	119	62	1.1	23	0.66	0.15	261.93



Lot 98

Y 99 HC LE DUKE 1473

4/4/2021 • M962797 • P

HC LEDGER 4396 M853214
 HC LE DUKE 2184
 BOX P SANDRON 5100 P
 HC MS SANDRON 8103 F1267500
 HC LONG RANGE 5013

LT LEDGER 0332 P
 LT BLUEGRASS 4017 P
 LT BRENDA 6120 PLD
 OAKDALE DUKE 9003P
 HC SILVER 0145
 HC SILVER SAND 1336
 BOX P AUDREY 9067 P
 LT LONG DISTANCE 9001 PLD
 HC TRES 7048

BW: 86 AWW: 590

	CE	BW	WW	YW	TM	SC	CW	REA	MARB	TSI
EPDs:	12.4	-3.6	48	88	48	0.7	11	0.57	0.12	233.73

• HC Blue Rock 5113 - Dam of Distinction
 • HC Long Range 5013
 • HC Tres 7048 - Diamond Dam of Distinction

Y 100 HC FRANCHISE 1479

3/26/2021 • M962800 • P

LT LEDGER 0332 P
 HC LRC FRANCHISE 8778 ET
 EM934389

M6 MS 761 NANCY 6100 P ET

BOX P SANDRON 5100 P

HC MS SANDRON 8125
 F1267522

HC BLUE ROCK 5116

LT BLUEGRASS 4017 P
 LT BRENDA 6120 PLD

WCR SIR DUKE 761
 M6 MS H45 NANCY 382 ET
 HC SILVER SAND 1336
 BOX P AUDREY 9067 P

LT-HC BLUE ROCK 0368 P
 HC SPUR 1096

BW: 87 AWW: 642

	CE	BW	WW	YW	TM	SC	CW	REA	MARB	TSI
EPDs:	8.6	-1.2	55	101	48	1.1	18	0.57	0.18	244.85

• HC Spur 1096 - Dam of Distinction

Y 101 HC FRANCHISE 1489

3/29/2021 • M962803 • P

LT LEDGER 0332 P
 HC LRC FRANCHISE 8778 ET
 EM934389

M6 MS 761 NANCY 6100 P ET

LT RUSHMORE 6033 PLD

HC MS RUSH 8196
 F1267821

HC FREE RANGE 6191

LT BLUEGRASS 4017 P
 LT BRENDA 6120 PLD

WCR SIR DUKE 761
 M6 MS H45 NANCY 382 ET
 LT RUSHMORE 8060 PLD
 LT AMANDA 4338 PLD

HC FREE RANGE 4201 ET
 HC BLUE ROCK 4111

BW: 89 AWW: 684

	CE	BW	WW	YW	TM	SC	CW	REA	MARB	TSI
EPDs:	4.5	-1.2	62	113	55	1.3	23	0.62	0.19	256.17

Y 102 HC FRANCHISE 1491

3/31/2021 • M962804 • S

LT LEDGER 0332 P
 HC LRC FRANCHISE 8778 ET
 EM934389

M6 MS 761 NANCY 6100 P ET

HCR EQUITY 3123 PLD
 8199

HC ROCKET 6202

LT BLUEGRASS 4017 P
 LT BRENDA 6120 PLD

WCR SIR DUKE 761
 M6 MS H45 NANCY 382 ET
 HCR NETWORK 7017 PLD
 MISS HCR RANDI 8410 P TW

WC ROCKET 0021 P
 HC BLUE ROCK 4146

BW: 90 AWW: 681

	CE	BW	WW	YW	TM	SC	CW	REA	MARB	TSI
EPDs:	6.2	0	59	104	51	1.1	19	0.62	0.21	246.81

• HC Blue Rock 4146 - Dam of Distinction

Y 103 HC MOMENTUM 1493

3/16/2021 • M962805 • P

LT RUSHMORE 6033 PLD
 M880332

LT AMANDA 4338 PLD

LT SILVER LEDGE 4063 P

HC ROCKET 4097

LT RIO BRAVO 3181 P
 LT BRENDA'S EASE 3055PLD

LT LONG DISTANCE 9001 PLD
 LT AMANDA 6208 PLD
 LT LEDGER 0332 P
 LT MOLLY 8011 PLD

WC ROCKET 0021 P
 HC LEAD 0138

BW: 83 AWW: 658

	CE	BW	WW	YW	TM	SC	CW	REA	MARB	TSI
EPDs:	5.8	-1.4	57	111	53	1.2	25	0.67	0.14	255

LOTS 104-120 ARE OUT OF FIRST CALF HEIFERS

Y 104 HC MOMENTUM 1495

3/1/2021 • M962806 • P

LT RUSHMORE 6033 PLD
 M880332

LT AMANDA 4338 PLD

HC BLUE ROCK 2403

HC MS SLATE 9013
 F1281762

HC CHEYENNE 1069

LT RIO BRAVO 3181 P
 LT BRENDA'S EASE 3055PLD

LT LONG DISTANCE 9001 PLD
 LT AMANDA 6208 PLD
 LT-HC BLUE ROCK 0368 P
 HC LEAD R 0120

LT CHEYENNE BLEND 7142 P
 HC EZ JACK 6157

BW: 75 AWW: 635

	CE	BW	WW	YW	TM	SC	CW	REA	MARB	TSI
EPDs:	3.4	-1.5	62	112	57	1.2	22	0.61	0.15	254.87

Y 105 HC COMMISSIONER 1498

3/12/2021 • M962807 • P

HCR EQUITY 3123 PLD
 M836788

HC MS SLATE 9018
 F1281766

HC PENDLETON 2024

HCR NETWORK 7017 PLD

MISS HCR RANDI 8410 P TW

HC BLUE ROCK 2403

HC PENDLETON 2024

NWMSU DOC SILVER 362 PLD
 MISS HCR WIND 527 PLD ET

SCHURRTOP HCR RANCHER
 MISS HCR WIND 4023 PLD
 LT-HC BLUE ROCK 0368 P
 HC LEAD R 0120

BOX P PENDLETON 9022 P/S
 HC EASY 4142

BW: 81 AWW: 688

	CE	BW	WW	YW	TM	SC	CW	REA	MARB	TSI
EPDs:	2.7	0.1	61	108	52	0.8	15	0.58	0.24	251.2

• HC Easy 4142 - Dam of Distinction



Y 106 HC MOMENTUM 1512

3/9/2021 • M962808 • P

LT RUSHMORE 6033 PLD
 M880332

HC MS BROTHER 9090
 F1281822

HC ROCKET 5066

LT RUSHMORE 8060 PLD

LT AMANDA 4338 PLD

HC BLUE ROCK 6339

LT RIO BRAVO 3181 P
 LT BRENDA'S EASE 3055PLD

LT LONG DISTANCE 9001 PLD
 LT AMANDA 6208 PLD
 LT-HC BLUE ROCK 0368 P
 HC LEAD R 0120

WC ROCKET 0021 P
 HC STASH 0065

BW: 86 AWW: 630

	CE	BW	WW	YW	TM	SC	CW	REA	MARB	TSI
EPDs:	6.5	-1.2	62	112	56	1	24	0.71	0.15	255.25

Y 107 HC KNIGHTED 1518

3/11/2021 • M962809 • P

WCR SIR KINGSBURY 116 P
M896195
WCR MS FIREWATER 127 P
HC MS BROTHER 9102
F1282553
HC BLAZE 5133

EATONS VISIONARY 2044 P
WCR MISS POWEREDGE 9132 P
TR MR FIREWATER 8600U
WCR MS PRINCE 939 P
LT-HC BLUE ROCK 0368 P
HC LEAD R 0120
BAR S RAPID FIRE 1484
HC LONG RANGE 1188

BW: 87 AWW: 647

	CE	BW	WW	YW	TM	SC	CW	REA	MARB	TSI
EPDs:	2.9	0.1	54	104	55	0.5	13	0.53	0.09	246.34

Y 108 HC COMMISSIONER 1521

3/10/2021 • M962810 • P

HCR EQUITY 3123 PLD
M836788
MISS HCR RANDI 8410 P TW
HC MS BLUE SAGE 9107
F1282557
HC BLAZE 5163

HCR NETWORK 7017 PLD
NWMSU DOC SILVER 362 PLD
MISS HCR WIND 527 PLD ET
SCHURRTOP HCR RANCHER
MISS HCR WIND 4023 PLD
LT-HC BLUE ROCK 0368 P
EATONS MISS BLAKE 30985
BAR S RAPID FIRE 1484
HC ROCKET 2146

BW: 85 AWW: 709

	CE	BW	WW	YW	TM	SC	CW	REA	MARB	TSI
EPDs:	5.1	0	59	107	55	1	16	0.66	0.21	251.98

Y 109 HC COMMISSIONER 1524

3/11/2021 • M962811 • P

HCR EQUITY 3123 PLD
M836788
MISS HCR RANDI 8410 P TW
HC MS SLATE 9113
F1282563
HC PINTA 5189

HCR NETWORK 7017 PLD
NWMSU DOC SILVER 362 PLD
MISS HCR WIND 527 PLD ET
SCHURRTOP HCR RANCHER
MISS HCR WIND 4023 PLD
LT-HC BLUE ROCK 0368 P
HC LEAD R 0120
HC COLUMBUS 3405
HC BLUE ROCK 3065

BW: 90 AWW: 656

	CE	BW	WW	YW	TM	SC	CW	REA	MARB	TSI
EPDs:	1.8	1.8	61	110	52	0.8	17	0.64	0.24	252.77

• HC Pinta 5189 - Dam of Distinction

Y 110 HC MOMENTUM 1528

3/10/2021 • M962812 • P

LT RUSHMORE 6033 PLD
M880332
HC MS REIGN 9122
F1282569
HC WRANGLER 6209

LT RUSHMORE 8060 PLD
LT RUSHMORE 8060 PLD
LT BRENDA'S EASE 3055PLD
LT AMANDA 4338 PLD
LT LONG DISTANCE 9001 PLD
LT AMANDA 6208 PLD
WCR SIR KINGSBURY 7334 P
WCR MS FIREWATER 127 P
WR WRANGLER W601
HC LONE RANGER 4180

BW: 73 AWW: 676

	CE	BW	WW	YW	TM	SC	CW	REA	MARB	TSI
EPDs:	7.2	-3.9	62	117	64	1.2	24	0.65	0.11	262.5

• HC Lone Ranger 4180 - Dam of Distinction

Y 111 HC MOMENTUM 1531

3/5/2021 • M962813 • P

LT RUSHMORE 6033 PLD
M880332
HC MS SANDRON 9129
F1282574
HC RANGER 6033

LT RUSHMORE 8060 PLD
LT RIO BRAVO 3181 P
LT BRENDA'S EASE 3055PLD
LT AMANDA 4338 PLD
LT LONG DISTANCE 9001 PLD
LT AMANDA 6208 PLD
HC SILVER SAND 1336
BOX P AUDREY 9067 P
HC LONE RANGER 4366
HC MONTY 0052

BW: 72 AWW: 672

	CE	BW	WW	YW	TM	SC	CW	REA	MARB	TSI
EPDs:	11.5	-3.8	61	113	61	1.2	24	0.62	0.12	258.51

• A low birthweight Rushmore 6033 son with top calving ease EPDs - CE/9% and BW/6%

Y 112 HC MOMENTUM 1532

3/15/2021 • M962814 • P

LT RUSHMORE 6033 PLD
M880332
HC MS SANDRON 9133
F1282578
HC RIMROCK 6050

LT RUSHMORE 8060 PLD
LT RIO BRAVO 3181 P
LT BRENDA'S EASE 3055PLD
LT AMANDA 4338 PLD
LT LONG DISTANCE 9001 PLD
LT AMANDA 6208 PLD
HC SILVER SAND 1336
BOX P AUDREY 9067 P
HC RIMROCK 4247
HC LEAD 0138

BW: 86 AWW: 652

	CE	BW	WW	YW	TM	SC	CW	REA	MARB	TSI
EPDs:	4.6	-0.5	60	113	58	1.2	23	0.63	0.13	255.05

Y 113 HC MOMENTUM 1534

3/10/2021 • M962815 • S

LT RUSHMORE 6033 PLD
M880332
HC MS REIGN 9146
F1282585
HC SMOOTH BLEND 6160

LT RUSHMORE 8060 PLD
LT RIO BRAVO 3181 P
LT BRENDA'S EASE 3055PLD
LT LONG DISTANCE 9001 PLD
LT AMANDA 6208 PLD
WCR SIR KINGSBURY 7334 P
WCR MS FIREWATER 127 P
HC PENDLETON 3334
HC LONG RANGE 3166

BW: 90 AWW: 765

	CE	BW	WW	YW	TM	SC	CW	REA	MARB	TSI
EPDs:	7.4	-2	67	123	70	1.1	23	0.62	0.11	264.35

• Impressive EPDs - WW/YW/TSI all in the top 15% for the Charolais breed



Y 114 HC SANDSTONE 1537

4/21/2021 • M962816 • P

HC SANDRON 9474
M932538

BOX P SANDRON 5100 P

HC BLUE STONE 6135

LT RUSHMORE 6033 PLD

HC MS MOMENTUM 9168
F1282598

HC MS CANYON 7090

HC SILVER SAND 1336
BOX P AUDREY 9067 P

HC BLUE ROCK 2403
HC ROCKET 3063

LT RUSHMORE 8060 PLD
LT AMANDA 4338 PLD

HC RIMROCK 4247
HC LONE RANGER 3036

BW: 84 AWW: 786

	CE	BW	WW	YW	TM	SC	CW	REA	MARB	TSI
EPDs:	6.8	-0.9	73	122	64	1.1	19	0.69	0.14	261.09

• Exceptional spread from birth to weaning with top EPDs for WW/5% and YW/15%

Y 115 HC MOMENTUM 1541

3/4/2021 • M962817 • S

LT RUSHMORE 8060 PLD

LT RUSHMORE 6033 PLD
M880332

LT AMANDA 4338 PLD

HCR DURACELL 7130 PLD

HC MS CAPACITOR 9184
F1282607

HC MS COMMISSIONER 7158

LT RIO BRAVO 3181 P
LT BRENDA'S EASE 3055PLD

LT LONG DISTANCE 9001 PLD
LT AMANDA 6208 PLD
SUMMIT POLLED VALUE Z10
MISS HCR RANDI 1425 PLD

HCR EQUITY 3123 PLD
HC LONE RANGER 4158

BW: 67 AWW: 673

	CE	BW	WW	YW	TM	SC	CW	REA	MARB	TSI
EPDs:	10.2	-3.9	63	116	61	1	25	0.69	0.16	262.04

• HC Ms Commissioner 7158 - Dam of Distinction

Y 116 HC REAGAN 1542

3/10/2021 • M962818 • P

GHC REAGAN 9012
EM928719

LT BLUE VALUE 7903 ET

LT BRENDA 6120 PLD

HC WRANGLER 6546

HC MS 46WRANGLER 9185
F1282608

HC MS COMMISSIONER 7159

LT BLUEGRASS 4017 P
LT UNLIMITED MAID 7184 P

LT RIO BRAVO 3181 P
LT BRENDA'S EASE 3055PLD
WR WRANGLER W601
HC LONE RANGER 4179

HCR EQUITY 3123 PLD
HC LONG RANGE 4166

BW: 70 AWW: 684

	CE	BW	WW	YW	TM	SC	CW	REA	MARB	TSI
EPDs:	12.3	-4	64	102	57	0.8	18	0.69	0.19	245.33

• A Regan 9012 X Wrangler bull with top ranking EPDs - CE/7% and BW/5%

Y 117 HC DUKE 1543

3/2/2021 • M962819 • P

DCR MR SIR DUKE E27
M899990

WCR SIR DUKE 8141 P

DCR MS SUBSTANCE C179

HCR EQUITY 3123 PLD
9188

HC MS CROSS COUNTRY 7175

WCR SIR DUKE 6235 P
WCR MS DESIGN 6238 P

DCR MR SUBSTANCE A240
JCH MS EASY BLEND T117
HCR NETWORK 7017 PLD
MISS HCR RANDI 8410 P TW

LT LONG DISTANCE 9001 PLD
HC BRONCO 5034

BW: 79 AWW: 682

	CE	BW	WW	YW	TM	SC	CW	REA	MARB	TSI
EPDs:	8.8	-0.1	65	110	61	0.7	23	0.68	0.22	251.91

• HC Ms Cross Country 7175 - Dam of Distinction

Y 118 HC MOMENTUM 1544

3/11/2021 • M962819 • P

LT RUSHMORE 6033 PLD
M880332

LT AMANDA 4338 PLD

HCR EQUITY 3123 PLD
9197

HC MS COMMISSIONER 9197
F1282617

HC MS CROSS COUNTRY 7213

LT RIO BRAVO 3181 P
LT BRENDA'S EASE 3055PLD

LT LONG DISTANCE 9001 PLD
LT AMANDA 6208 PLD

HCR NETWORK 7017 PLD
MISS HCR RANDI 8410 P TW

LT LONG DISTANCE 9001 PLD
HC BLAZE 5163

BW: 65 AWW: 722

	CE	BW	WW	YW	TM	SC	CW	REA	MARB	TSI
EPDs:	12.8	-5.1	61	111	63	1.1	19	0.65	0.2	259.22

• Low birthweight to top weaning stats - CE EPD/top 5% and BW/top 2% ranking

Y 119 HC KNIGHTED 1545

3/8/2021 • M962820 • P

WCR SIR KINGSBURY 7334 P
M896195

WCR MS FIREWATER 127 P

LT RUSHMORE 6033 PLD

HC MS MOMENTUM 9199
F1282618

HC MS COMMISSIONER 7221

EATONS VISIONARY 2044 P
WCR MISS POWEREDGE 9132 P

TR MR FIREWATER 8600U
WCR MS PRINCE 939 P

LT RUSHMORE 8060 PLD
LT AMANDA 4338 PLD

HCR EQUITY 3123 PLD
HC LONE RANGER 5200

BW: 78 AWW: 628

	CE	BW	WW	YW	TM	SC	CW	REA	MARB	TSI
EPDs:	10	-3.9	48	102	57	0.8	19	0.61	0.08	250.88

Y 120 HC DUKE 1549

3/9/2021 • M965821 • P

DCR MR SIR DUKE E27
M899990

DCR MS SUBSTANCE C179

BS BLUE ROCK 617 ET

HC MS BLUE SAGE 9226
F1293825

HC ROCKET 4070

WCR SIR DUKE 8141 P

WCR MS DESIGN 6238 P

DCR MR SUBSTANCE A240
JCH MS EASY BLEND T117
LT-HC BLUE ROCK 0368 P
EATONS MISS BLAKE 30985

WC ROCKET 0021 P
HC CAD 3 0014

BW: 94 AWW: 626

	CE	BW	WW	YW	TM	SC	CW	REA	MARB	TSI
EPDs:	6.8	0.9	59	107	54	1.3	26	0.68	0.21	249.44



Mose, Merla, Mickie, Dave, Josh, Jake and Matt - 1990 HC Bull Sale

HEBBERT

Charolais Bulls



Hebbert Ranch
62075 Hebbert Lane
Hyannis, NE 69350

FIRST CLASS MAIL



www.HebbertRanch.com
Family Ranching since 1886