

Family Ranching since 1886

# HEBBERT

*Charolais Bulls*



**41<sup>st</sup> Annual Bull Sale**

**Saturday April 8, 2023**

**1:00 p.m. MST**

**Hyannis, Nebraska**



**SUPERIOR**  
LIVESTOCK AUCTION

ALL NEW PUREBRED PLATFORM

bid.superiorlivestock.com | 800.422.2117

### VIEWING THE AUCTION

The auction will be broadcast online at [Bid.SuperiorLivestock.com](http://Bid.SuperiorLivestock.com) and the pre-recorded videos will also be hosted there. You do not need an account just to watch the auction or view videos of the sale offering.

### ONLINE BIDDING

Go to [Bid.SuperiorLivestock.com](http://Bid.SuperiorLivestock.com) for Superior's new online bidding platform. If you have not registered there before you will need to create an account. The first time you register an account you will receive a confirmation e-mail that you must click on. Once you have completed this, select the auction you would like to bid on and click the "Request a Buyer Number" button. The first time you request a buyer number you will be sent a confirmation code via text. Enter that code in the login portal and you will receive a buyer number. This 2-step verification process will only have to be done once and in the future you will be able to simply login and request a buyer number and receive it instantly for any auction. Once you have successfully registered and received a buyer number it will show your name and buyer number on both the video preview page and the online bidding page when you are logged in. If you have an account at LiveAuctions.tv you may skip the registration process and use those login credentials to request a buyer number as LiveAuctions is a division of Superior Livestock. For more details on registering an account and also how to bid, you may watch a tutorial at [Bid.SuperiorLivestock.com/how-it-works](http://Bid.SuperiorLivestock.com/how-it-works).

### TURN IN BIDS OVER THE PHONE

This is Superior's traditional method of buying cattle and is the suggested process for anybody who does not have consistent, high-speed internet. You still must register an account at [Bid.SuperiorLivestock.com](http://Bid.SuperiorLivestock.com) and request a buyer number. Once you receive a buyer number you will see the bid line phone number. Just watch the auction online and call in at least 2 lots ahead of the lot you are looking to bid on. A Superior Livestock representative will be with you on the phone and will assist you in placing bids.

**FOR HELP WITH REGISTRATION OR ANY PART OF THE BIDDING PROCESS PLEASE CALL SUPERIOR AT (800) 422-2117.**

Functional cows are the backbone of our operation. We cull our cows rigorously, keeping only the best. Every cow in the herd has been bred on the Hebbert Ranch. This has enabled us to stack generations of pedigrees high in maternal traits and qualities consistent with problem free cows - particularly udder structure, fertility, calving ease, disposition, total performance and structural soundness.

Hebbert Charolais  
2011-2013, 2016-2021 AICA Area 4 Top Registration Award

The American International Charolais Association's Dam of Distinction program recognizes dams that have consistently weaned calves with above average weaning weights and calving intervals of 380 days or less.

Hebbert Charolais has consistently been a top breeder nationally in the number of dams achieving AICA Dam of Distinction status.



# HEBBERT

## Charolais Ranch

### 41<sup>st</sup> Annual Bull Sale

Saturday April 8, 2023 - 1:00 p.m. MST - Hebbert Sale Facility - Hyannis, Nebraska

Be our guest for lunch at 11:30 a.m.

#### LOCATION

Hebbert Sale Facility  
73859 East Hwy 2  
Hyannis, Nebraska

#### SALE DAY PHONES

Sale Office:  
308-458-2811

Matt Hebbert:  
C 308-458-8812

Lacy Hebbert:  
C 308-458-8823

Ranch Phone:  
308-458-2540

#### ANNOUNCEMENTS

Announcements from the auction block on sale day take precedence over information in this catalog.

#### AUCTIONEER

Kyle Schow  
308-289-3772

#### REPRESENTATIVES

Hadley Schotte  
AICA/Charolais Journal  
785-562-6632

Jake St. Amant  
TSLN/Fence Post  
308-568-9084

Kadon Leddy  
Cattle Business Weekly  
605-924-0757

#### HEALTH

Dr. Jon Werth  
Dr. Zach Adam  
Hyannis Veterinary Service  
308-458-2735

Every bull offered for sale will have passed a complete breeding soundness exam. Scrotal measurement information will be available sale day. All bulls tested negative for BVD and will be furnished with interstate health papers.

Bulls going to states which require trich tests on virgin bulls will be tested before delivery.

#### GUARANTEE

All bulls sell backed by the Hebbert Ranch Guarantee. They are guaranteed throughout the first breeding season against injury or death. If a replacement bull is not available, credit will be issued at the next annual sale. All claims for replacements need to be made by September of the current year.

#### DELIVERY

Another added value of our program is free delivery within a radius of 500 miles. Should you choose to haul your own purchases on sale day, we offer a \$100/bull delivery rebate.

#### LIABILITY

Hebbert Charolais does not assume any liability in case of accident or loss of property.

*Many changes have occurred in the past 41 years, but some things remain the same. Our mission from the beginning has been to produce quality genetics that work for purebred and commercial cattlemen and to stand behind the cattle we sell. We are fortunate to be in a business that connects us with cattle producers from all across the country. We acknowledge the diversity of each operation in its approach towards beef production. Please call if we can assist you in finding bulls to fit your cattle breeding program. We look forward to visiting with you.*



[www.HebbertRanch.com](http://www.HebbertRanch.com)

# Reference Sires

The bulls we use in our breeding program represent proven genetics. They are consistent in type, moderately framed with above average muscle and excellent feet and legs. The average CE EPD of 7.0 and BW EPD of -1.2 for the bulls offered for sale reflects our commitment to calving ease.

All Hebbert Charolais pedigrees carry a heavy influence of American International Charolais Association Trait Leading Sires. These AICA Trait Leaders are proven bulls that have been identified as top ranking, High Accuracy Sires excelling in individual and combined traits such as calving ease, birth, weaning and yearling weights and carcass merit.

## Multiple Year AICA Trait Leading Sire genetics represented in HC pedigrees:

Ledger 0332	Bluegrass 4017	Oakdale Duke 9003
Grid Maker 104	Easy Pro 1158	Rio Bravo 3181
Leader 2233	Rushmore 8060	Firewater 5792
Fastrack 82	Rio Bravo 3181	Unlimited Ease 9108
Doc Silver 362	Mr Solution W13	Whitehot 105
Assertion 1277	Landmark 5052	Silver Distance 5342
Easy Blend 5125	Long Distance 9001	Blue Mountain 1041
Blue Value 7903	Kingsbury 116	Visionary 2044



CCC Probit 9506 P

## Y A CCC PROBIT 9506 P

9/2/2019 • M948522 • P

LT RUSHMORE 8060 PLD M760665	LT RIO BRAVO 3181 P	LT RIO BLANCO 1234 P LT 7N OF DUKE 9083 PLD
	LT BRENDA'S EASE 3055PLD	LT UNLIMITED EASE 9108 LT BRENDA 1014 PLD
WC CCC SWEETHEART 6644 P ET EF1243916	LT BLUE VALUE 7903 ET	LT BLUEGRASS 4017 P LT UNLIMITED MAID 7184 P
	WC CCC SWEETHEART 1140 P	WC-WCCC ROCKETFUEL 7109 BALDRIDGE SWEETHEART 7M

	CE	BW	WW	YW	TM	SC	CW	REA	MARB	TSI
EPDs:	11.1	-0.6	65	114	63	1.7	19	0.69	0.16	251.72

## Y B HC BLUE STONE 0431

3/25/2020 • M949409 • P

BS BLUE ROCK 617 ET EM895334	LT-HC BLUE ROCK 0368 P	LT BLUEGRASS 4017 P LT BRENDA'S EASE 3055PLD
	EATONS MISS BLAKE 30985	EATONS POWER 9183 EATONS MISS BLAKE 4908
HC FREE RANGE 6204 F1230737	HC FREE RANGE 4201 ET	LT LONG DISTANCE 9001 PLD HC DUKE 9145
	HC LONE RANGER 4158	HC LONG RANGE 1395 HC RIDGE 2006

	CE	BW	WW	YW	TM	SC	CW	REA	MARB	TSI
EPDs:	7.1	-1.5	63	114	57	1.2	23	0.71	0.22	258.58

## Y C LT RUSHMORE 6033 PLD

2/22/2016 • M880332 • P

LT RUSHMORE 8060 PLD M760665	LT RIO BRAVO 3181 P	LT RIO BLANCO 1234 P LT 7N OF DUKE 9083 PLD
	LT BRENDA'S EASE 3055PLD	LT UNLIMITED EASE 9108 LT BRENDA 1014 PLD
LT AMANDA 4338 PLD F1190491	LT LONG DISTANCE 9001 PLD	LT SILVER DISTANCE 5342P LT BELLE 7026 P
	LT AMANDA 6208 PLD	M6 GAIN & GRADE 927 PLD LT AMANDA 1269 PLD

	CE	BW	WW	YW	TM	SC	CW	REA	MARB	TSI
EPDs:	10.1	-4.2	66	125	69	1.4	33	0.75	0.17	271.61



LT Patriot 4004 Pld

# Y D

## LT PATRIOT 4004 PLD

2/10/2014 • M852822 • P

LT LEDGER 0332 P M791626	LT BLUEGRASS 4017 P	LT ASSERTION 1277 P LT PEARL'S BREEZE 2236 P
	LT BRENDA 6120 PLD	LT RIO BRAVO 3181 P LT BRENDA'S EASE 3055PLD LT SILVER DISTANCE 5342P LK MISS RIO 713
LK MISS RIO 2119 F1161464	LK DISTANT RIO 900	LT SILVER DISTANCE 5342P LK MISS T 870
	LK MISS SILVER T 059	

	CE	BW	WW	YW	TM	SC	CW	REA	MARB	TSI
EPDs:	2.3	-0.4	66	126	56	1.2	32	0.53	0.17	264.47

# Y E

## LT JUDGE 0691 PLD

2/16/2020 • M946485 • P

LT PATRIOT 4004 PLD M852822	LT LEDGER 0332 P	LT BLUEGRASS 4017 P LT BRENDA 6120 PLD
	LK MISS RIO 2119	LK DISTANT RIO 900 LK MISS SILVER T 059
LK MISS LONG DISTANCE 2104 F1159332	LT LONG DISTANCE 9001 PLD	LT SILVER DISTANCE 5342P LT BELLE 7026 P
	LK LARKSPUR 060	LT WYOMING WIND 4020 PLD LT SPUR PETUNIA

	CE	BW	WW	YW	TM	SC	CW	REA	MARB	TSI
EPDs:	8.6	-1.9	68	127	61	1.3	29	0.95	0.09	269.84

Calving ease, low birth weight, growth, and carcass performance are all words that can be used to describe LT Judge 0691 PLD. Judge is proving that as a herd sire he can provide that calving ease and low birth weight and compliment it with his ability to produce calves that grow exceptionally well. Ranking in the top 10% for the breed, Judge's EPDs speak for themselves. We are excited about this first crop of Judge bulls and believe Judge will be making a name for himself in the future.  
**Semen available.**



LT Judge 0691 Pld

# Y F

## NGC LOYALIST 839F ET

9/30/2018 • EM930613 • P

LT PATRIOT 4004 PLD M852822	LT LEDGER 0332 P	LT BLUEGRASS 4017 P LT BRENDA 6120 PLD
	LK MISS RIO 2119	LK DISTANT RIO 900 LK MISS SILVER T 059
M&M MS NEW STANDARD 3517 PLDET EF1185544	M6 NEW STANDARD 842 P ET	LT RIO BRAVO 3181 P M6 MS GRID MAKER 2175 ET
	M&M MS STEALTH 9509 PLD ET	DR STEALTH 574 BALDRIDGE SWEETHEART 7M

	CE	BW	WW	YW	TM	SC	CW	REA	MARB	TSI
EPDs:	0.7	0.6	71	135	63	1.6	38	0.7	0.2	275.42



NGC Loyalist 839F ET

# ADG

ADG is the measurement of the average daily gain on test. All of the bulls offered by Hebbert Charolais have been performance tested as one group and are subject to identical environmental conditions. The ADG is based off a test period of 10/20/2022 through 3/2/2023, 133 days. During this time the bulls are developed using the self-fed Ranger Limiter and free choice prairie hay. The target daily gain during this time period is 2.5-3.0 pounds daily, stressing the importance for a steady growth pattern without excess fat. Hebbert Charolais bulls are developed with the longevity of structural soundness in mind.

## Y 1

### HC JUDGE 2361

3/23/2022 • M977481 • P

LT JUDGE 0691 PLD  
M946485

LT PATRIOT 4004 PLD

LT LEDGER 0332 P  
LK MISS RIO 2119

LK MISS LONG DISTANCE 2104

LT LONG DISTANCE 9001 PLD  
LK LARKSPUR 060

HC LONE RANGER 4366

HC LONG RANGE 1395  
HC PENDLETON 2047

HC RANGER 6033  
F1230613

HC MONTY 0052

RC MONTANA 644 POLLED  
HC TED 4147

BW: 98 AWW: 673 ADG: 3.3

	CE	BW	WW	YW	TM	SC	CW	REA	MARB	TSI
EPDs:	6	-0.1	64	120	57	1.1	25	0.72	0.11	260.37

- A deep bodied son of Judge backed by the powerful pedigrees of LT Patriot and LT Ledger
- Note the top percentile ranking EPDs for YW/20% and TSI/25%



Lot 1

## Y 2

### HC BLUE STONE 2367

3/16/2022 • M977487 • P

HC BLUE STONE 0431  
M949409

BS BLUE ROCK 617 ET

LT-HC BLUE ROCK 0368 P  
EATONS MISS BLAKE 30985

HC FREE RANGE 6204

HC FREE RANGE 4201 ET  
HC LONE RANGER 4158  
BOX P PENDLETON 9022 P/S  
HC MORE BLEND 0110

HC PENDLETON 3334

HC SMOOTH BLEND 6125  
F1230684

HC BLUE 3032

LT BLUE MOUNTAIN 1041 PLD  
HC GM 8045

BW: 100 AWW: 692 ADG: 2.5

	CE	BW	WW	YW	TM	SC	CW	REA	MARB	TSI
EPDs:	3.5	0.8	64	117	60	1.2	23	0.65	0.19	258.8

- A Blue Stone 0431 bull with a Marbling EPD in the top 20% for the Charolais breed
- Dam HC Smooth Blend 6125 has an average weaning ratio: 4/108



Lot 2

## Y 3

### HC PROBITY 2432

3/20/2022 • M977530 • P

CCC PROBITY 9506 P  
M948522

LT RUSHMORE 8060 PLD

LT RIO BRAVO 3181 P  
LT BRENDA'S EASE 3055PLD

WC CCC SWEETHEART 6644 P ET

LT BLUE VALUE 7903 ET  
WC CCC SWEETHEART 1140 P

HCR EQUITY 3123 PLD

HCR NETWORK 7017 PLD  
MISS HCR RANDI 8410 P TW

HC MS COMMISSIONER 8185  
F1267595

HC BLUE STONE 6154

HC BLUE ROCK 2403  
HC LONG RANGE 3141

BW: 84 AWW: 651 ADG: 2.7

	CE	BW	WW	YW	TM	SC	CW	REA	MARB	TSI
EPDs:	11.9	-2.3	59	104	57	1.1	15	0.67	0.2	247.45

- Notable EPDs ranking in the top 8%/CE, 20%/BW, MARB
- Sire Probity 9506 is an exciting son of Rushmore 8060, a bull that leads the breed with CE/BW EPDs in the top 3%



Lot 3

# Y 4

## HC PROBITY 2414

3/30/2022 • M977510 • P

CCC PROBITY 9506 P  
M948522

LT RUSHMORE 8060 PLD

LT RIO BRAVO 3181 P  
LT BRENDA'S EASE 3055PLD

WC CCC SWEETHEART 6644 P ET

LT BLUE VALUE 7903 ET  
WC CCC SWEETHEART 1140 P  
LT-HC BLUE ROCK 0368 P  
HC LEAD R 0120

HC BLUE ROCK 2403

HC LONG RANGE 3143

LT LONG DISTANCE 9001 PLD  
HC SPUR 1084

HC MS SLATE 8060  
F1267461

BW: 95 AWW: 646 ADG: 2.4

	CE	BW	WW	YW	TM	SC	CW	REA	MARB	TSI
EPDs:	8.5	-0.6	59	103	55	1.1	13	0.63	0.19	245.09

- Another eyecatching Probity son with a marbling EPD/20% ranking



Lot 4

# Y 5

## HC BLUE STONE 2304

3/16/2022 • M977350 • P

HC BLUE STONE 0431  
M94909

BS BLUE ROCK 617 ET

LT-HC BLUE ROCK 0368 P  
EATONS MISS BLAKE 30985

HC FREE RANGE 6204

HC FREE RANGE 4201 ET  
HC LONE RANGER 4158  
WCR SIR TRADITION 066  
VCR MISS MAC IV 317

M6 GRID MAKER 104 PET

HC GRID MAKER 2002  
F1154915

HC CIGAR 2043

LHD CIGAR E46  
HC CHAPS 6146 P

BW: 98 AWW: 748 ADG: 3.4

	CE	BW	WW	YW	TM	SC	CW	REA	MARB	TSI
EPDs:	5.2	0	65	110	60	1	19	0.72	0.14	250.94

- HC Gridmaker 2002, a daughter of the long time trait leading sire Grid Maker 104, achieved the elite designation as a Diamond Dam of Distinction

# Y 6

## HC HICKOK 2321

3/17/2022 • M977363 • P

CCC 2B GUNSLINGER 9030 P  
M930782

WC INFERNO 6561 P  
WC ASTA 0505 P

LT RUSHMORE 8060 PLD  
WC ASTA 0505 P

M&M MS SLEEP EASY 4518 PLD

M6 SLEEP EASY 734 PLD  
M&M MS WIND STORM 2030 PLD  
WC-WCCC ROCKETFUEL 7109  
WC BRENDA BEEBOP 8008

WC ROCKET 0021 P

HC ROCKET 4083  
F1192514

HC STASH 0065

CCR HAMS STASHER R801 P  
HC TQ 5062

BW: 72 AWW: 648 ADG: 3

	CE	BW	WW	YW	TM	SC	CW	REA	MARB	TSI
EPDs:	15.1	-5.4	61	104	61	1.2	31	0.88	0.1	249.34

- Low birthweight HC Hickok 2321 exhibits extra width and dimension combined with top 2% ranking EPDs for CE/BW
- HC Rocket 4083 has an average weaning ratio: 5/103

# Y 7

## HC JUDGE 2333

3/27/2022 • M977370 • P

LT JUDGE 0691 PLD  
M946485

LT PATRIOT 4004 PLD

LT LEDGER 0332 P  
LK MISS RIO 2119

LK MISS LONG DISTANCE 2104

LT LONG DISTANCE 9001 PLD  
LK LARKSPUR 060

LT LONG DISTANCE 9001 PLD

LT SILVER DISTANCE 5342P  
LT BELLE 7026 P

HC LONG RANGE 5013  
F1212513

HC TRES 7048

HEBBERTS TRES 3333  
HC CAD 2053

BW: 94 AWW: 707 ADG: 3.3

	CE	BW	WW	YW	TM	SC	CW	REA	MARB	TSI
EPDs:	8.4	-1.9	63	110	61	0.7	14	0.71	0.09	251.2

- This son of Judge 0691 carries the widely acclaimed genetics of Patriot 4004 and Ledger 0332
- HC Long Range 5013 - Dam of Distinction has a wean record of 6 calves/113 ratio



Lot 6

# Y 8

## HC HICKOK 2336

3/19/2022 • M977373 • P

CCC 2B GUNSLINGER 9030 P  
M930782

WC INFERNO 6561 P  
WC ASTA 0505 P

LT RUSHMORE 8060 PLD  
WC ASTA 0505 P

M&M MS SLEEP EASY 4518 PLD

M6 SLEEP EASY 734 PLD  
M&M MS WIND STORM 2030 PLD  
WCR SIR TRADITION 066  
VCR MISS MAC IV 317

M6 GRID MAKER 104 PET

HC GRID MAKER 5048  
F1212542

HC SPUR 9113

SCC SPUR 49S PLD  
HC MONTY 6049

BW: 80 AWW: 742 ADG: 2.7

	CE	BW	WW	YW	TM	SC	CW	REA	MARB	TSI
EPDs:	11.7	-3.4	70	121	73	1.1	32	0.89	0.19	264.96

- Exceptional balance of top ranking EPDs for this Gunslinger bull - CE/9%, BW/8%, WW,CW,REA/15% and YW,TSI/20%
- Note the enviable spread from the low birthweight to a top weaning weight
- HC Grid Maker 5048 - Dam of Distinction with a wean record of 6/111 ratio

# Y 9

## HC ROYAL 2301

4/2/2022 • M977347 • P

WCR SIR KINGSBURY 883 P  
M913936

WCR KINGSBURY 116 P  
WCR MISS POWEREDGE 9132 P

EATONS VISIONARY 2044 P  
WCR MISS POWEREDGE 9132 P

WCR MS FIREWATER 6360 P

TR MR FIREWATER 8600U  
WCR MS BIG JIM 307 P  
LT SILVER YIELD 3196 P  
LT MATTIE 9026 POLLED

LT SILVER DISTANCE 5342P

HC SILVER 0129  
F1127438

HC GRID MAKER 8021

M6 GRID MAKER 104 PET  
HC WALLSTREET 1105

BW: 98 AWW: 679 ADG: 2.5

	CE	BW	WW	YW	TM	SC	CW	REA	MARB	TSI
EPDs:	0.7	0	59	109	56	0.8	18	0.57	0.13	251.56

- A stacked pedigree with bulls achieving Trait Leader status - WCR Kingsbury 116, Eatons Visionary, Silver Distance and Gridmaker
- HC Silver 0129 exemplifies longevity with an average weaning ratio: 11/103

# Y 10

## HC HICKOK 2303

3/16/2022 • M977349 • P

WC INFERNO 6561 P  
CCC 2B GUNSLINGER 9030 P  
M930782

M&M MS SLEEP EASY 4518 PLD  
M6 SLEEP EASY 734 PLD  
M&M MS WIND STORM 2030 PLD

LT BLUE VALUE 7903 ET  
LT BLUEGRASS 4017 P  
LT UNLIMITED MAID 7184 P

HC BLUE VALUE 1050  
F1141318

HC MONTY 5064  
RC MONTANA 644 POLLED  
HC CAD 1075

BW: 68 AWW: 534 ADG: 2.7

	CE	BW	WW	YW	TM	SC	CW	REA	MARB	TSI
EPDs:	14.8	-5.4	47	90	57	1.2	34	0.71	0.23	241.1

- A Gunslinger bull with a top 2% EPD ranking for CE/BW combined with top carcass EPDs - CW/10%, Marb/15%

# Y 11

## HC FIRST HAND 2305

3/20/2022 • M977351 • P

WR TOP HAND C631  
M867612

WT MISS PRINCESS T629  
BOX P PENDLETON 9022 P/S

HC PENDLETON 2030  
F1154935

HC JULIET 5045

LT LEDGER 0332 P  
LT BLUEGRASS 4017 P  
LT BRENDA 6120 PLD

OAKDALE DUKE 9003P  
WR EASE 4412  
LT BLUEGRASS 4017 P  
BOX P LYDIA 7091 P

SCC FABIO 158N PLD  
HC CAD 9157

BW: 93 AWW: 668 ADG: 3.1

	CE	BW	WW	YW	TM	SC	CW	REA	MARB	TSI
EPDs:	5.7	-0.8	55	99	47	1.1	19	0.63	0.16	241.31

- HC Juliet 5045 - Dam of Distinction

# Y 12

## HC ROYAL 2308

4/3/2022 • M977353 • D

WCR SIR KINGSBURY 883 P  
M913936

WCR MS FIREWATER 6360 P  
TR MR FIREWATER 8600U  
WCR MS BIG JIM 307 P

HC LONG RANGE 1395  
LT LONG DISTANCE 9001 PLD  
HC DUKE 9145

HC LONE RANGER 3027  
F1174774

HC RIO 8027  
LT RIO BRAVO 3181 P  
HC CIGAR 2043

BW: 96 AWW: 620 ADG: 2.9

	CE	BW	WW	YW	TM	SC	CW	REA	MARB	TSI
EPDs:	0.5	0.1	60	115	55	0.9	25	0.65	0.16	258.46

- HC Lone Ranger 3027 has a wean record of 7 calves/103 ratio
- HC Rio 8027 - Dam of Distinction

# Y 13

## HC PROBITY 2311

3/24/2022 • M977356 • P

CCC PROBITY 9506 P  
M948522

WC CCC SWEETHEART 6644 P ET  
LT BLUE MOUNTAIN 1041 PLD

HC BLUE 3046  
F1174805

HC LEADER 8132

LT RUSHMORE 8060 PLD  
LT RIO BRAVO 3181 P  
LT BRENDA'S EASE 3055PLD

LT BLUE VALUE 7903 ET  
WC CCC SWEETHEART 1140 P  
LT BLUE VALUE 7903 ET  
LT GRACIE 9007 POLLED

LT LEADER BOARD 6110 P  
HC CAD E 6117

BW: 105 AWW: 655 ADG: 2.4

	CE	BW	WW	YW	TM	SC	CW	REA	MARB	TSI
EPDs:	2.1	2.3	64	113	58	1.4	18	0.61	0.19	250.58

- HC Blue 3046 -Dam of Distinction

# Y 14

## HC HICKOK 2312

3/18/2022 • M977357 • P

WC INFERNO 6561 P  
CCC 2B GUNSLINGER 9030 P  
M930782

M&M MS SLEEP EASY 4518 PLD  
M6 SLEEP EASY 734 PLD  
M&M MS WIND STORM 2030 PLD

BOX P PENDLETON 9022 P/S  
LT BLUEGRASS 4017 P  
BOX P LYDIA 7091 P

HC PENDLETON 3060  
F1174819

HC CARGO 9065  
SCHURRTOP X403 H838 P  
HC TQ 4082

BW: 98 AWW: 702 ADG: 2.6

	CE	BW	WW	YW	TM	SC	CW	REA	MARB	TSI
EPDs:	7	-0.5	66	116	66	1.2	31	0.73	0.17	256.8

- HC Cargo 9065 - Dam of Distinction

# Y 15

## HC ROYAL 2315

4/24/2022 • M977358 • P

WCR SIR KINGSBURY 883 P  
M913936

WCR MS FIREWATER 6360 P  
LT-HC BLUE ROCK 0368 P

HC BLUE ROCK 3084  
F1174842

HC CAD 3 0014

WCR KINGSBURY 116 P  
EATONS VISIONARY 2044 P  
WCR MISS POWEREDGE 9132 P

TR MR FIREWATER 8600U  
WCR MS BIG JIM 307 P  
LT BLUEGRASS 4017 P  
LT BRENDA'S EASE 3055PLD

HC CAD 5218  
HC MONTY 1206

BW: 92 AWW: 667 ADG: 2.6

	CE	BW	WW	YW	TM	SC	CW	REA	MARB	TSI
EPDs:	3.4	-0.7	61	113	53	1	24	0.57	0.16	255.96

# Y 16

## HC LEAD TIME 2317

3/23/2022 • M979430 • P

FF ABOUT TIME Y07  
OW LEAD TIME 6294 PLD  
M875419

OW MISS SANDCREEK 3031 PLD  
MC-OW SANDCREEK 375  
OW MISS MAXIMIZER W13 PLD

BOX P PENDLETON 9022 P/S  
LT BLUEGRASS 4017 P  
BOX P LYDIA 7091 P

HC PENDLETON 3096  
F1174852

HC STASH 0061  
CCR HAMS STASHER R801 P  
HC CAD 5040

BW: 92 AWW: 589 ADG: 3

	CE	BW	WW	YW	TM	SC	CW	REA	MARB	TSI
EPDs:	2.2	-0.3	49	100	49	1.1	14	0.63	0.22	247.53

# Y 17

## HC JUDGE 2318

3/31/2022 • M977360 • P

LT JUDGE 0691 PLD  
M946485

LT PATRIOT 4004 PLD  
LK MISS LONG DISTANCE 2104

HC DUKE 3125  
F1174878

HC PENDLETON 1027

LT LEDGER 0332 P  
LK MISS RIO 2119

LT LONG DISTANCE 9001 PLD  
LK LARKSPUR 060  
VCR SIR DUKE 135 PLD  
MISS VELVEETA JANE 630

BOX P PENDLETON 9022 P/S  
HC CIGAR 4027

BW: 95 AWW: 718 ADG: 2.9

	CE	BW	WW	YW	TM	SC	CW	REA	MARB	TSI
EPDs:	5.9	-0.4	62	117	63	1.1	19	0.76	0.07	257.86

- HC Duke 3125 achieved Diamond Dam of Distinction status with her weaning record of 8 calves/108 ratio



# Y 18

## HC JUDGE 2319

4/3/2022 • M977361 • P

LT JUDGE 0691 PLD  
M946485

LT PATRIOT 4004 PLD

LK MISS LONG DISTANCE 2104

LT-HC BLUE ROCK 0368 P

HC BLUE ROCK 3160  
F1174911

HC SPUR 1142

LT LEDGER 0332 P  
LK MISS RIO 2119

LT LONG DISTANCE 9001 PLD  
LK LARKSPUR 060

LT BLUEGRASS 4017 P  
LT BRENDA'S EASE 3055PLD

SCC SPUR 49S PLD  
HC CHINOOK 8146

BW: 84 AWW: 633 ADG: 2.7

	CE	BW	WW	YW	TM	SC	CW	REA	MARB	TSI
EPDs:	10.8	-3	60	111	54	1.2	23	0.79	0.14	255.71

- A Judge bull with EPDs ranking in the top 15%/CE and 10%BW
- HC Blue Rock 3160 has a weaning record of 6 bulls/104 ratio
- HC Chinook 8146 - Dam of Distinction

# Y 19

## HC JUDGE 2320

3/18/2022 • M977362 • P

LT JUDGE 0691 PLD  
M946485

LT PATRIOT 4004 PLD

LK MISS LONG DISTANCE 2104

LT-HC BLUE ROCK 0368 P

HC BLUE ROCK 4063  
F1192544

HC CARGO 9148

LT LEDGER 0332 P  
LK MISS RIO 2119

LT LONG DISTANCE 9001 PLD  
LK LARKSPUR 060

LT BLUEGRASS 4017 P  
LT BRENDA'S EASE 3055PLD

SCHURRTOP X403 H838 P  
HC CAD 3 7035

BW: 83 AWW: 665 ADG: 2.1

	CE	BW	WW	YW	TM	SC	CW	REA	MARB	TSI
EPDs:	10.7	-2.7	56	104	53	1	22	0.77	0.16	250.23

- A solid top 15% ranking for CE/BW matched with an actual birthweight of 83 lbs.
- HC Blue Rock 4063 - Dam of Distinction

# Y 20

## HC LEAD TIME 2322

3/23/2022 • M979431 • P

OW LEAD TIME 6294 PLD  
M875419

FF ABOUT TIME Y07

OW MISS SANDCREEK 3031 PLD

BOX P PENDLETON 9022 P/S

HC PENDLETON 4110  
F1192427

HC BLEND 1026

COOLEY ROYCE 1107T39  
DC GRONA 146T

MC-OW SANDCREEK 375  
OW MISS MAXIMIZER W13 PLD

LT BLUEGRASS 4017 P  
BOX P LYDIA 7091 P

LT EASY BLEND 5125 PLD  
HC EDGE 4021

BW: 108 AWW: 765 ADG: 2.2

	CE	BW	WW	YW	TM	SC	CW	REA	MARB	TSI
EPDs:	-5.2	2.9	69	124	62	1	16	0.54	0.22	262.39

- A high weaning Lead Time bull with a top 15% ranking for WW, YW and MARB EPDs
- A pedigree with high performing females - HC Pendleton 4110 has weaned 7 calves/107 ratio
- HC Blend 1026 and HC Edge 4021 - Dams of Distinction

# Y 21

## HC MOMENTUM 2324

3/25/2022 • M977364 • D

LT RUSHMORE 6033 PLD  
M880332

LT RUSHMORE 8060 PLD

LT AMANDA 4338 PLD

BOX P PENDLETON 9022 P/S

HC PENDLETON 4131  
F1192439

HC LEADER 1100

LT RIO BRAVO 3181 P  
LT BRENDA'S EASE 3055PLD

LT LONG DISTANCE 9001 PLD  
LT AMANDA 6208 PLD

LT BLUEGRASS 4017 P  
BOX P LYDIA 7091 P

LT LEADER BOARD 6110 P  
HC CAD E 8010

BW: 86 AWW: 706 ADG: 2.9

	CE	BW	WW	YW	TM	SC	CW	REA	MARB	TSI
EPDs:	8.7	-2.2	65	119	60	1.1	23	0.6	0.16	262.17

- A Rushmore 6033 son with a 20% ranking for BW, TSI and 25% for WW, YW
- HC Pendleton 4131 has a wean record of 6 calves/102 index
- HC Cad E 8010 - Dam of Distinction

# Y 22

## HC MOMENTUM 2325

4/1/2022 • M977365 • P

LT RUSHMORE 6033 PLD  
M880332

LT AMANDA 4338 PLD

BOX P PENDLETON 9022 P/S

HC PENDLETON 4137  
F1192430

HC LEADER 1129

LT RIO BRAVO 3181 P  
LT BRENDA'S EASE 3055PLD

LT LONG DISTANCE 9001 PLD  
LT AMANDA 6208 PLD

LT BLUEGRASS 4017 P  
BOX P LYDIA 7091 P

LT LEADER BOARD 6110 P  
HC SPUR 8112

BW: 82 AWW: 678 ADG: 2.8

	CE	BW	WW	YW	TM	SC	CW	REA	MARB	TSI
EPDs:	10.1	-3.2	62	113	58	1.1	22	0.61	0.17	257.95

- A lower birthweight Rushmore 6033 son supported by EPD rankings in the top 20%/CE, 9%/BW

# Y 23

## HC JUDGE 2326

3/20/2022 • M981724 • S

LT JUDGE 0691 PLD  
M946485

LT PATRIOT 4004 PLD

LK MISS LONG DISTANCE 2104

BOX P PENDLETON 9022 P/S

HC PENDLETON 4152  
F1192442

HC DUKE 1185

LT LEDGER 0332 P  
LK MISS RIO 2119

LT LONG DISTANCE 9001 PLD  
LK LARKSPUR 060

LT BLUEGRASS 4017 P  
BOX P LYDIA 7091 P

OAKDALE DUKE 9003P  
HC SILVER 9164

BW: 100 AWW: 628 ADG: 2.9

	CE	BW	WW	YW	TM	SC	CW	REA	MARB	TSI
EPDs:	5.3	-0.8	68	124	61	1.2	21	0.71	0.11	264.49

# Y 24

## HC JUDGE 2327

4/13/2022 • M977366 • P

LT JUDGE 0691 PLD  
M946485

LK MISS LONG DISTANCE 2104

HC STASH 0372

HC LONG RANGE 2036

LT PATRIOT 4004 PLD

LT LEDGER 0332 P  
LK MISS RIO 2119

LT LONG DISTANCE 9001 PLD  
LK LARKSPUR 060

CCR HAMS STASHER R801 P  
HC LEADER 8111

LT LONG DISTANCE 9001 PLD  
HC EDGE 6003

BW: 80 AWW: 726 ADG: 2.5

	CE	BW	WW	YW	TM	SC	CW	REA	MARB	TSI
EPDs:	10.2	-2.8	66	114	56	0.9	16	0.73	0.12	256.86

- A noteworthy spread from actual BWT to WWT with EPDs ranking in the top 20%/CE, 15%/BW

# Y 25

## HC BLUE STONE 2329

3/15/2022 • M977367 • S

HC BLUE STONE 0431  
M949409

HC LONE RANGER 4180  
F1192394

BS BLUE ROCK 617 ET

HC FREE RANGE 6204

HC LONG RANGE 1395

HC MORE BLEND 2118

LT-HC BLUE ROCK 0368 P  
EATONS MISS BLAKE 30985

HC FREE RANGE 4201 ET  
HC LONE RANGER 4158

LT LONG DISTANCE 9001 PLD  
HC DUKE 9145

HC HPF BLEND 888  
HC SPUR 9070

BW: 97 AWW: 694 ADG: 2.5

	CE	BW	WW	YW	TM	SC	CW	REA	MARB	TSI
EPDs:	5.8	-0.7	67	118	58	1.1	19	0.67	0.2	260.82

- Strong maternal performance - Dam of Distinction HC Lone Ranger 4180 has a wean record of 7/106
- HC Spur 9070 - Dam of Distinction

# Y 26

## HC BLUE STONE 2330

3/22/2022 • M977368 • P

HC BLUE STONE 0431  
M949409

BS BLUE ROCK 617 ET

HC FREE RANGE 6204

HC LONG RANGE 2409

HC LONG RANGE 4184  
F1192392

HC SPUR 2137

LT-HC BLUE ROCK 0368 P  
EATONS MISS BLAKE 30985

HC FREE RANGE 4201 ET  
HC LONE RANGER 4158

LT LONG DISTANCE 9001 PLD  
HC LEADER 0142

SCC SPUR 49S PLD  
HC AMP 9173

BW: 104 AWW: 683 ADG: 3

	CE	BW	WW	YW	TM	SC	CW	REA	MARB	TSI
EPDs:	1	1.8	62	105	55		13	0.66	0.17	244.6

• HC Long Range 4184 has an average weaning ratio of 3 heifers/102 and 4 bulls/108

# Y 27

## HC JUDGE 2331

3/5/2022 • M977369 • P

LT JUDGE 0691 PLD  
M946485

LT PATRIOT 4004 PLD

LK MISS LONG DISTANCE 2104

HC LONG RANGE 1395

HC LONE RANGER 4194  
F1192408

HC BLUE ROCK 2188

LT LEDGER 0332 P  
LK MISS RIO 2119

LT LONG DISTANCE 9001 PLD  
LK LARKSPUR 060

LT LONG DISTANCE 9001 PLD  
HC DUKE 9145

LT-HC BLUE ROCK 0368 P  
HC LEAD 0151

BW: 84 AWW: 619 ADG: 2.9

	CE	BW	WW	YW	TM	SC	CW	REA	MARB	TSI
EPDs:	8.7	-2.9	55	110	48	1	22	0.79	0.16	258.85

• A Judge 0691 bull with a -2.9 BW EPD/15% ranking

# Y 28

## HC WALKER 2337

3/13/2022 • M977374 • S

CCC MESCALITO 9038 P  
M93075

WC MILESTONE 5223 P

WC CCC SWEETHEART 6166 P ET

BOX P PENDLETON 9022 P/S

HC PENDLETON 5058  
F1212551

HC GRID MAKER 0016

WC BENELLI 2134 P ET  
WC LADY BLUE 0506 P

CCC WC RESOURCE 417 P  
BALDRIDGE SWEETHEART 7M

LT BLUEGRASS 4017 P  
BOX P LYDIA 7091 P

M6 GRID MAKER 104 PET  
HC MONTY 2026

BW: 102 AWW: 683 ADG: 3

	CE	BW	WW	YW	TM	SC	CW	REA	MARB	TSI
EPDs:	5.4	0.8	55	103	56	0.8	24	0.69	0.26	249.74

• HC Walker 2337 records a MARB EPD in the top 6%  
• HC Pendleton 5058 - Dam of Distinction

# Y 29

## HC JUDGE 2339

3/29/2022 • M977375 • P

LT JUDGE 0691 PLD  
M946485

LT PATRIOT 4004 PLD

LK MISS LONG DISTANCE 2104

LT-HC BLUE ROCK 0368 P

HC BLUE ROCK 5065  
F1212557

HC WIND 0063

LT LEDGER 0332 P  
LK MISS RIO 2119

LT LONG DISTANCE 9001 PLD  
LK LARKSPUR 060

LT BLUEGRASS 4017 P  
LT BRENDA'S EASE 3055PLD

TR MR WYOMING WIND 5583R  
HC CAD E 5054

BW: 82 AWW: 593 ADG: 2.6

	CE	BW	WW	YW	TM	SC	CW	REA	MARB	TSI
EPDs:	10.1	-3	57	109	57	1.2	24	0.82	0.11	254.48

• Note HC Judge 2339's own BWT of 82 lbs and a corresponding BW EPD of -3.0  
• A great cow family with HC Blue Rock 5065 - Dam of Distinction  
• HC Wind 0063 - Diamond Dam of Distinction

# Y 30

## HC MOMENTUM 2346

4/5/2022 • M977380 • S

LT RUSHMORE 6033 PLD  
M880332

LT AMANDA 4338 PLD

BAR S RAPID FIRE 1484

HC BLAZE 5133  
F1212620

HC LONG RANGE 1188

LT RIO BRAVO 3181 P  
LT BRENDA'S EASE 3055PLD

LT LONG DISTANCE 9001 PLD  
LT AMANDA 6208 PLD

TR PZC RAPID FIRE 9775 ET  
BAR S SHURDOLL 6308

LT LONG DISTANCE 9001 PLD  
HC AMP 9172

BW: 91 AWW: 687 ADG: 2.9

	CE	BW	WW	YW	TM	SC	CW	REA	MARB	TSI
EPDs:	7.4	-2.7	59	104	58	0.8	15	0.6	0.14	248.71

# Y 31

## HC BLUE STONE 2347

3/26/2022 • M977381 • S

HC BLUE STONE 0431  
M949409

HC FREE RANGE 6204

HC PENDLETON 3334

HC SMOOTH BLEND 5135  
F1212622

HC GRID MAKER 2002

BS BLUE ROCK 617 ET

LT-HC BLUE ROCK 0368 P  
EATONS MISS BLAKE 30985

HC FREE RANGE 4201 ET  
HC LONE RANGER 4158

BOX P PENDLETON 9022 P/S  
HC MORE BLEND 0110

M6 GRID MAKER 104 PET  
HC CIGAR 2043

BW: 106 AWW: 750 ADG: 2.4

	CE	BW	WW	YW	TM	SC	CW	REA	MARB	TSI
EPDs:	3.4	1	67	115	63	1.1	21	0.69	0.15	254.08

• HC Blue Stone 2347's own WW of 750 lb is backed by his dam and granddam's high performance records  
• HC Smooth Blend 5135 - Dam of Distinction  
• HC Grid Maker 2002 - Diamond Dam of Distinction

# Y 32

## HC LOYALIST 2348

3/9/2022 • M977382 • P

NGC LOYALIST 839F ET  
EM930613

M&M MS NEW STANDARD 3517 PLDET

HCF UNCLE JESSE

HC JESSE 5138  
F1212625

HC PENDLETON 2024

LT PATRIOT 4004 PLD

LT LEDGER 0332 P  
LK MISS RIO 2119

M6 NEW STANDARD 842 P ET  
M&M MS STEALTH 9509 PLD ET

TR MR FIRE WATER 5792RET  
SCR SUPER LADY P4793

BOX P PENDLETON 9022 P/S  
HC EASY 4142

BW: 103 AWW: 672 ADG: 2.4

	CE	BW	WW	YW	TM	SC	CW	REA	MARB	TSI
EPDs:	-0.8	2	61	115	54	1.2	25	0.67	0.12	254.29

• HC Easy 4142 - Dam of Distinction



# Y 33

## HC PROBITY 2349

3/19/2022 • M977383 • S

CCC PROBITY 9506 P  
M948522

LT RUSHMORE 8060 PLD  
WC CCC SWEETHEART 6644 P ET

HC BLAZE 5156  
F1212641

HC SPUR 2091

LT RIO BRAVO 3181 P  
LT BRENDA'S EASE 3055PLD

LT BLUE VALUE 7903 ET  
WC CCC SWEETHEART 1140 P  
TR PZC RAPID FIRE 9775 ET  
BAR S SHURDOLL 6308

SCC SPUR 49S PLD  
HC CAD 3 8084

BW: 87 AWW: 634 ADG: 2.7

	CE	BW	WW	YW	TM	SC	CW	REA	MARB	TSI
EPDs:	6.6	0.1	56	99	55	1.1	10	0.62	0.14	239.64

- HC Blaze 5156 - Dam of Distinction

# Y 34

## HC HICKOK 2351

3/14/2022 • M977384 • S

CCC 2B GUNSLINGER 9030 P  
M930782

WC INFERNO 6561 P  
M&M MS SLEEP EASY 4518 PLD

HC SMOOTH BLEND 5166  
F1212651

HC ROCKET 2173

LT RUSHMORE 8060 PLD  
WC ASTA 0505 P

M6 SLEEP EASY 734 PLD  
M&M MS WIND STORM 2030 PLD  
BOX P PENDLETON 9022 P/S  
HC MORE BLEND 0110

WC ROCKET 0021 P  
HC MORE BLEND 0103

BW: 91 AWW: 669 ADG: 3

	CE	BW	WW	YW	TM	SC	CW	REA	MARB	TSI
EPDs:	8.9	-1.8	64	114	69	1.3	35	0.83	0.12	256.57

- HC Hickok 2351 has a high ranking CW EPD of 9%. His sire, Gunslinger 9030, has trait leading EPDs - CW/top 1%, REA/top7%

# Y 35

## HC JUDGE 2353

3/8/2022 • M977385 • P

LT JUDGE 0691 PLD  
M946485

LT PATRIOT 4004 PLD  
LK MISS LONG DISTANCE 2104

HC LONE RANGER 5187  
F1212667

HC ROCKET 3062

LT LEDGER 0332 P  
LK MISS RIO 2119

LT LONG DISTANCE 9001 PLD  
LK LARKSPUR 060  
LT LONG DISTANCE 9001 PLD  
HC DUKE 9145

WC ROCKET 0021 P  
HC CAD 3 9071

BW: 88 AWW: 614 ADG: 2.9

	CE	BW	WW	YW	TM	SC	CW	REA	MARB	TSI
EPDs:	7.1	-1.6	61	114	54	1.1	22	0.84	0.13	258.45

- HC Rocket 3062 - Dam of Distinction

# Y 36

## HC AGATE 2354

3/31/2022 • M977386 • P

LT-HC BLUE ROCK 0368 P  
M791645

LT BLUEGRASS 4017 P  
LT BRENDA'S EASE 3055PLD

HC LONE RANGER 5200  
F1212678

HC ROCKET 3088

LT ASSERTION 1277 P  
LT PEARL'S BREEZE 2236 P

LT UNLIMITED EASE 9108  
LT BRENDA 1014 PLD  
LT LONG DISTANCE 9001 PLD  
HC DUKE 9145

WC ROCKET 0021 P  
HC SPUR 0026

BW: 82 AWW: 568 ADG: 2.6

	CE	BW	WW	YW	TM	SC	CW	REA	MARB	TSI
EPDs:	10.4	-2.9	47	97	44	1	19	0.7	0.22	248.86

- HC Agate 2354 is a lower birthweight son of Blue Rock 0368 with CE/BW EPDS in the top 15%
- LT-HC Blue Rock 0368's own pedigree is stacked with proven Trait Leading Sires and Dams of Distinction LT Brenda's Ease 3055 and LT Brenda 1014

# Y 37

## HC WALKER 2355

3/5/2022 • M977387 • P

CCC MESCALITO 9038 P  
M930975

WC MILESTONE 5223 P  
WC CCC SWEETHEART 6166 P ET

HC DUKE 5214  
F1212686

HC LONG RANGE 3146

WC BENELLI 2134 P ET  
WC LADY BLUE 0506 P

CCC WC RESOURCE 417 P  
BALDRIDGE SWEETHEART 7M  
VCR SIR DUKE 135 PLD  
MISS VELVEETA JANE 630

LT LONG DISTANCE 9001 PLD  
HC SPUR 1091

BW: 103 AWW: 656 ADG: 2.3

	CE	BW	WW	YW	TM	SC	CW	REA	MARB	TSI
EPDs:	3.9	1.1	57	105	56	0.7	16	0.7	0.23	250.16

- HC Walker 2355 - MARB EPD/top 10% ranking

# Y 38

## HC BLUE STONE 2356

3/20/2022 • M977388 • P

HC BLUE STONE 0431  
M949409

BS BLUE ROCK 617 ET  
HC FREE RANGE 6204

HC LONE RANGER 6009 ET  
F1232537

HC LEAD R 0120

LT-HC BLUE ROCK 0368 P  
EATONS MISS BLAKE 30985

HC FREE RANGE 4201 ET  
HC LONE RANGER 4158  
LT LONG DISTANCE 9001 PLD  
HC DUKE 9145

HC LEADER 8205  
HC CHINOOK 7146

BW: 82 AWW: 653 ADG: 2.7

	CE	BW	WW	YW	TM	SC	CW	REA	MARB	TSI
EPDs:	10.6	-3.3	61	110	53	0.9	20	0.71	0.23	257.99

- HC Blue Stone 2356's EPDs rank in the top 15%/CE and 8%/BW
- HC Lone Ranger 6009 - Dam of Distinction
- HC Lead R 0120 is the dam of herd sire HC Blue Rock 2403

# Y 39

## HC JUDGE 2357

3/7/2022 • M977389 • S

LT JUDGE 0691 PLD  
M946485

LT PATRIOT 4004 PLD  
LK MISS LONG DISTANCE 2104

HC RIMROCK 6013  
F1230597

HC RIO 9004

LT LEDGER 0332 P  
LK MISS RIO 2119

LT LONG DISTANCE 9001 PLD  
LK LARKSPUR 060  
LT-HC BLUE ROCK 0368 P  
HC LEADER 8145

LT RIO BRAVO 3181 P  
HC MONTY 0014

BW: 77 AWW: 607 ADG: 2.1

	CE	BW	WW	YW	TM	SC	CW	REA	MARB	TSI
EPDs:	12.3	-4.2	54	109	52	1.4	28	0.84	0.15	257.91

- A Judge 0691 son with exceptional calving ease EPDs - CE/7% and BW/4%

# Y 40

## HC LEAD TIME 2358

3/15/2022 • M979432 • P

OW LEAD TIME 6294 PLD  
M875419

FF ABOUT TIME Y07  
OW MISS SANDCREEK 3031 PLD

HC RANGER 6017  
F1230601

HC CAD 3 9051

COOLEY ROYCE 1107T39  
DC GRONA 146T

MC-OW SANDCREEK 375  
OW MISS MAXIMIZER W13 PLD  
HC LONG RANGE 1395  
HC PENDLETON 2047

HC CAD 5218  
HC EDGE 4002

BW: 104 AWW: 707 ADG: 3.5

	CE	BW	WW	YW	TM	SC	CW	REA	MARB	TSI
EPDs:	-2.3	1.8	61	111	58	1	14	0.62	0.21	252.76

- HC Cad 3 9051 - Dam of Distinction



Lot 41

## Y 42 HC MOMENTUM 2360

3/20/2022 • M977480 • S

LT RUSHMORE 6033 PLD  
M880332

LT RUSHMORE 8060 PLD

LT AMANDA 4338 PLD

LT-HC BLUE ROCK 0368 P

HC BLUE ROCK 6027  
F1230608

HC BLEND 0015

LT RIO BRAVO 3181 P

LT BRENDA'S EASE 3055PLD

LT LONG DISTANCE 9001 PLD

LT AMANDA 6208 PLD

LT BLUEGRASS 4017 P

LT BRENDA'S EASE 3055PLD

LT EASY BLEND 5125 PLD

HC CAD 2001

BW: 79 AWW: 620 ADG: 2.4

	CE	BW	WW	YW	TM	SC	CW	REA	MARB	TSI
EPDs:	9.2	-3.5	57	109	56	1.2	27	0.67	0.17	256.04

• A Rushmore 6033 sired bull with BW EPD ranking in the top 7%

## Y 44 HC DUKE 2364

3/17/2022 • P1388387 • P

DCR MR SIR DUKE E27  
M899990

WCR SIR DUKE 8141 P

DCR MS SUBSTANCE C179

LT SILVER LEDGE 4063 P

HC SLEDGE 6054  
F1230632

HC LEADER 1003

WCR SIR DUKE 6235 P

WCR MS DESIGN 6238 P

DCR MR SUBSTANCE A240

JCH MS EASY BLEND T117

LT LEDGER 0332 P

LT MOLLY 8011 PLD

LT LEADER BOARD 6110 P

HC MONTY 0177

BW: 91 AWW: 607 ADG: 2.6

	CE	BW	WW	YW	TM	SC	CW	REA	MARB	TSI
EPDs:	7.6	0.5	58	105	45	0.8	25	0.61	0.22	247.5

## Y 46 HC MOMENTUM 2366

3/23/2022 • M977485 • P

LT RUSHMORE 6033 PLD  
M880332

LT RUSHMORE 8060 PLD

LT AMANDA 4338 PLD

LT-HC BLUE ROCK 0368 P

HC BLUE ROCK 6103  
F1230668

HC LEAD R 2086

LT RIO BRAVO 3181 P

LT BRENDA'S EASE 3055PLD

LT LONG DISTANCE 9001 PLD

LT AMANDA 6208 PLD

LT BLUEGRASS 4017 P

LT BRENDA'S EASE 3055PLD

HC LEADER 8205

HC GM 8045

BW: 106 AWW: 722 ADG: 3.1

	CE	BW	WW	YW	TM	SC	CW	REA	MARB	TSI
EPDs:	1.6	0.8	70	123	65	1.1	26	0.71	0.19	262.95

• HC Momentum 2366 - EPD ranking for WW,YW in the top 15%

• HC Blue Rock 6103 - Dam of Distinction

## Y 41 HC ROYAL 2359

3/30/2022 • M977390 • P

WCR SIR KINGSBURY 883 P  
M913936

WCR KINGSBURY 116 P

WCR MS FIREWATER 6360 P

HC LONE RANGER 6019  
F1230603

HC CARGO 9065

EATONS VISIONARY 2044 P

WCR MISS POWEREDGE 9132 P

TR MR FIREWATER 8600U

WCR MS BIG JIM 307 P

LT LONG DISTANCE 9001 PLD

HC DUKE 9145

SCHURRTOP X403 H838 P

HC TQ 4082

BW: 92 AWW: 633 ADG: 2.9

	CE	BW	WW	YW	TM	SC	CW	REA	MARB	TSI
EPDs:	3.8	-0.7	63	116	56	0.9	21	0.62	0.18	259.54

• HC Cargo 9065 - Dam of Distinction

## Y 43 HC BLUE STONE 2362

3/20/2022 • M977482 • P

HC BLUE STONE 0431  
M949409

BS BLUE ROCK 617 ET

HC FREE RANGE 6204

LT SILVER LEDGE 4063 P

HC SLEDGE 6037  
F1230617

HC STASH 0061

LT-HC BLUE ROCK 0368 P

EATONS MISS BLAKE 30985

HC FREE RANGE 4201 ET

HC LONE RANGER 4158

LT LEDGER 0332 P

LT MOLLY 8011 PLD

CCR HAMS STASHER R801 P

HC CAD 5040

BW: 98 AWW: 602 ADG: 3.3

	CE	BW	WW	YW	TM	SC	CW	REA	MARB	TSI
EPDs:	2.2	0.9	54	103	46	1	21	0.71	0.18	246.76

## Y 45 HC ROYAL 2365

4/10/2022 • M977484 • P

WCR SIR KINGSBURY 883 P  
M913936

WCR KINGSBURY 116 P

WCR MS FIREWATER 6360 P

HC BLUE ROCK 6102  
F1230667

HC MORE BLEND 2084

EATONS VISIONARY 2044 P

WCR MISS POWEREDGE 9132 P

TR MR FIREWATER 8600U

WCR MS BIG JIM 307 P

LT BLUEGRASS 4017 P

LT BRENDA'S EASE 3055PLD

HC HPF BLEND 888

HC GRID MAKER 8041

BW: 107 AWW: 657 ADG: 3.2

	CE	BW	WW	YW	TM	SC	CW	REA	MARB	TSI
EPDs:	-4.6	2.9	65	119	59	1	27	0.65	0.13	257.49

## Y 47 HC JUDGE 2368

3/22/2022 • M977488 • P

LT JUDGE 0691 PLD  
M946485

LT PATRIOT 4004 PLD

LK MISS LONG DISTANCE 2104

HC BLUE ROCK 2403

HC PENDLETON 3060

LT LEDGER 0332 P

LK MISS RIO 2119

LT LONG DISTANCE 9001 PLD

LK LARKSPUR 060

LT-HC BLUE ROCK 0368 P

HC LEAD R 0120

BOX P PENDLETON 9022 P/S

HC CARGO 9065

BW: 94 AWW: 690 ADG: 2.9

	CE	BW	WW	YW	TM	SC	CW	REA	MARB	TSI
EPDs:	7.8	-1.2	64	118	56	1.1	22	0.74	0.17	260.97

• HC Cargo 9065 - Dam of Distinction

# Y 48

## HC MOMENTUM 2371

4/1/2022 • M977489 • S

LT RUSHMORE 8060 PLD  
LT RUSHMORE 6033 PLD  
M880332

LT AMANDA 4338 PLD

HC SILVER SAND 1336

HC ROCKET 4091

LT RIO BRAVO 3181 P  
LT BRENDA'S EASE 3055PLD

LT LONG DISTANCE 9001 PLD  
LT AMANDA 6208 PLD  
LT SILVER DISTANCE 5342P  
HC BLEND 9023

WC ROCKET 0021 P  
HC MORE BLEND 0111

BW: 86 AWW: 654 ADG: 2.7

	CE	BW	WW	YW	TM	SC	CW	REA	MARB	TSI
EPDs:	10.6	-3.6	60	107	60	1.1	23	0.65	0.13	251.3

- Note the CE/15% and BW/7% ranking for this Rushmore 6033 son
- HC More Blend 0111 - Dam of Distinction

# Y 49

## HC MOMENTUM 2372

3/13/2022 • M977491 • P

LT RUSHMORE 8060 PLD  
LT RUSHMORE 6033 PLD  
M880332

LT AMANDA 4338 PLD

HC LONG RANGE 1395

HC LONE RANGER 6189  
F1230723

HC BLUE ROCK 4106

LT RIO BRAVO 3181 P  
LT BRENDA'S EASE 3055PLD

LT LONG DISTANCE 9001 PLD  
LT AMANDA 6208 PLD  
LT LONG DISTANCE 9001 PLD  
HC DUKE 9145

LT-HC BLUE ROCK 0368 P  
HC LEADER 1011

BW: 76 AWW: 646 ADG: 3.3

	CE	BW	WW	YW	TM	SC	CW	REA	MARB	TSI
EPDs:	9.9	-3.4	60	116	58	1.2	24	0.71	0.2	263.93

- HC Momentum 2372 - BW EPD ranking in the top 8% of the breed
- HC Lone Ranger 6189 - Dam of Distinction

# Y 50

## HC ROYAL 2373

3/27/2022 • M977494 • S

WCR SIR KINGSBURY 883 P  
M913936

WCR MS FIREWATER 6360 P

HC SILVER SAND 1336

HC BLUE ROCK 4117

EATONS VISIONARY 2044 P  
WCR MISS POWEREDGE 9132 P

TR MR FIREWATER 8600U  
WCR MS BIG JIM 307 P  
LT SILVER DISTANCE 5342P  
HC BLEND 9023

LT-HC BLUE ROCK 0368 P  
HC LEADER 1051

BW: 87 AWW: 752 ADG: 2.2

	CE	BW	WW	YW	TM	SC	CW	REA	MARB	TSI
EPDs:	6.1	-1.8	70	121	63	0.8	22	0.54	0.13	260.06

- Enviably spread from BW to WW
- HC Leader 1051 - Dam of Distinction

# Y 51

## HC JUDGE 2375

3/11/2022 • M977496 • P

LT JUDGE 0691 PLD  
M946485

HC FREE RANGE 6195  
F1230729

HC PATRIOT 4004 PLD

LK MISS LONG DISTANCE 2104

HC FREE RANGE 4201 ET

HC PENDLETON 4121

LT LEDGER 0332 P  
LK MISS RIO 2119

LT LONG DISTANCE 9001 PLD  
LK LARKSPUR 060  
LT LONG DISTANCE 9001 PLD  
HC DUKE 9145

BOX P PENDLETON 9022 P/S  
HC BLEND 1063

BW: 82 AWW: 628 ADG: 2

	CE	BW	WW	YW	TM	SC	CW	REA	MARB	TSI
EPDs:	11.5	-3.5	63	119	54	1.1	24	0.78	0.12	264.79

- HC Judge 2375 - CE/10% , BW/7% rankings

# Y 52

## HC JUDGE 2376

3/21/2022 • M977497 • P

LT JUDGE 0691 PLD  
M946485

HC WRANGLER 6209  
F1230741

HC LONE RANGER 4180

LT PATRIOT 4004 PLD

LK MISS LONG DISTANCE 2104

WR WRANGLER W601

LT LEDGER 0332 P  
LK MISS RIO 2119

LT LONG DISTANCE 9001 PLD  
LK LARKSPUR 060  
CMF 192 WRANGLER 256  
WR MISS PRINCESS T629

HC LONG RANGE 1395  
HC MORE BLEND 2118

BW: 98 AWW: 716 ADG: 2.9

	CE	BW	WW	YW	TM	SC	CW	REA	MARB	TSI
EPDs:	6.1	-0.6	75	129	63	1.2	24	0.83	0.11	267.89

- Top ranking performance EPDs - WW/4% and YW/5%
- HC Lone Ranger 4180 - Dam of Distinction

# Y 53

## HC HICKOK 2377

3/12/2022 • M977498 • P

CCC 2B GUNSLINGER 9030 P  
M930782

HC EQUITY 6214  
F1230745

HC ROCKET 4043

WC INFERNO 6561 P  
WC ASTA 0505 P

M&M MS SLEEP EASY 4518 PLD

HCR EQUITY 3123 PLD

LT RUSHMORE 8060 PLD  
WC ASTA 0505 P

M6 SLEEP EASY 734 PLD  
M&M MS WIND STORM 2030 PLD  
HCR NETWORK 7017 PLD  
MISS HCR RANDI 8410 P TW

WC ROCKET 0021 P  
HC SILVER 8136

BW: 64 AWW: 667 ADG: 2.8

	CE	BW	WW	YW	TM	SC	CW	REA	MARB	TSI
EPDs:	16.3	-6.6	60	104	66	1	30	0.82	0.17	252.47

- HC Hickok 2377's CE/BW EPDs 1% ranking moves him to the top for the breed
- HC Equity 6214 - Dam of Distinction

# Y 54

## HC LOYALIST 2378

3/14/2022 • M977391 • P

NGC LOYALIST 839F ET  
EM930613

HC MS ROUND UP 7018  
F1251602

HC STASH 0061

LT PATRIOT 4004 PLD

M&M MS NEW STANDARD 3517 PLD ET

HC PENDLETON 3334

LT LEDGER 0332 P  
LK MISS RIO 2119

M6 NEW STANDARD 842 P ET  
M&M MS STEALTH 9509 PLD ET  
BOX P PENDLETON 9022 P/S  
HC MORE BLEND 0110

CCR HAMS STASHER R801 P  
HC CAD 5040

BW: 101 AWW: 694 ADG: 2.1

	CE	BW	WW	YW	TM	SC	CW	REA	MARB	TSI
EPDs:	6.4	-0.8	56	109	56	1.3	24	0.58	0.24	255.33

- NGC Loyalist 839's pedigree blends Patriot 4004 and New Standard 842, both with top ranking carcass weight EPDs for the Charolais breed

# Y 55

## HC LOYALIST 2381

3/10/2022 • M977394 • P

NGC LOYALIST 839F ET  
EM930613

HC MS ROUND UP 7082  
F1251891

HC LEAD R 3009

LT PATRIOT 4004 PLD

M&M MS NEW STANDARD 3517 PLD ET

HC PENDLETON 3334

LT LEDGER 0332 P  
LK MISS RIO 2119

M6 NEW STANDARD 842 P ET  
M&M MS STEALTH 9509 PLD ET  
BOX P PENDLETON 9022 P/S  
HC MORE BLEND 0110

HC LEADER 8205  
HC EDGE E 6104

BW: 91 AWW: 651 ADG: 2.6

	CE	BW	WW	YW	TM	SC	CW	REA	MARB	TSI
EPDs:	9.1	-2	64	119	57	1.3	31	0.77	0.12	261.83

- HC Edge E 6104 - Dam of Distinction

# Y 56

## HC LOYALIST 2383

3/21/2022 • M977395 • P

NGC LOYALIST 839F ET  
EM930613

LT PATRIOT 4004 PLD  
M&M MS NEW STANDARD 3517 PLDET

HC MS ROUND UP 7087  
F1251895

LT LEDGER 0332 P  
LK MISS RIO 2119

M6 NEW STANDARD 842 P ET  
M&M MS STEALTH 9509 PLD ET  
BOX P PENDLETON 9022 P/S  
HC MORE BLEND 0110

BROBERG'S KEYNOTE X17  
HC MONTY 8019

BW: 102 AWW: 696 ADG: 3

	CE	BW	WW	YW	TM	SC	CW	REA	MARB	TSI
EPDs:	2.9	0.1	64	119	55	1.5	27	0.64	0.16	260.45

• HC Monty 8019 - Dam of Distinction

# Y 57

## HC LOYALIST 2385

4/2/2022 • M977396 • S

NGC LOYALIST 839F ET  
EM930613

LT PATRIOT 4004 PLD  
M&M MS NEW STANDARD 3517 PLDET

HC MS ROUND UP 7097  
F1251904

LT LEDGER 0332 P  
LK MISS RIO 2119

M6 NEW STANDARD 842 P ET  
M&M MS STEALTH 9509 PLD ET  
BOX P PENDLETON 9022 P/S  
HC MORE BLEND 0110

WC ROCKET 0021 P  
HC LEADER 9134

BW: 101 AWW: 734 ADG: 2.9

	CE	BW	WW	YW	TM	SC	CW	REA	MARB	TSI
EPDs:	3.3	0.1	69	121	63	1.4	27	0.63	0.14	259.41

• HC Ms Round Up 7097 - Dam of Distinction

# Y 58

## HC LOYALIST 2388

3/4/2022 • M977397 • P

NGC LOYALIST 839F ET  
EM930613

LT PATRIOT 4004 PLD  
M&M MS NEW STANDARD 3517 PLDET

HC MS COMMISSIONER  
F1251962

HCR EQUITY 3123 PLD  
MISS HCR RANDI 8410 P TW

LT-HC BLUE ROCK 0368 P  
HC JESSE 7085

BW: 90 AWW: 602 ADG: 2.4

	CE	BW	WW	YW	TM	SC	CW	REA	MARB	TSI
EPDs:	7	-1.8	52	104	50	1.1	25	0.59	0.18	250.57

# Y 59

## HC LOYALIST 2389

4/6/2022 • M977398 • P

NGC LOYALIST 839F ET  
EM930613

LT PATRIOT 4004 PLD  
M&M MS NEW STANDARD 3517 PLDET

HC MS COMMISSIONER  
F1251966

HCR EQUITY 3123 PLD  
MISS HCR RANDI 8410 P TW

LT-HC BLUE ROCK 0368 P  
HC RIO 8027

BW: 97 AWW: 615 ADG: 3.4

	CE	BW	WW	YW	TM	SC	CW	REA	MARB	TSI
EPDs:	4.4	-0.4	60	116	51	1.2	29	0.66	0.23	261.54

# Y 60

## HC LOYALIST 2391

3/7/2022 • M977400 • P

NGC LOYALIST 839F ET  
EM930613

LT PATRIOT 4004 PLD  
M&M MS NEW STANDARD 3517 PLDET

HC MS COMMISSIONER  
F1251986

HCR EQUITY 3123 PLD  
MISS HCR RANDI 8410 P TW

BOX P PENDLETON 9022 P/S  
HC BLEND 1008

BW: 99 AWW: 619 ADG: 2.2

	CE	BW	WW	YW	TM	SC	CW	REA	MARB	TSI
EPDs:	3.9	0.2	58	114	54	1.2	29	0.65	0.19	257.54

• HC Pendleton 4105 and HC Blend 1008 - Dams of Distinction

# Y 61

## HC LOYALIST 2398

3/11/2022 • M977404 • P

NGC LOYALIST 839F ET  
EM930613

LT PATRIOT 4004 PLD  
M&M MS NEW STANDARD 3517 PLDET

HC MS SANDRON 7184  
F1252019

BOX P SANDRON 5100 P  
HC BLUE ROCK 5065

M6 NEW STANDARD 842 P ET  
M&M MS STEALTH 9509 PLD ET  
HC SILVER SAND 1336  
BOX P AUDREY 9067 P

LT-HC BLUE ROCK 0368 P  
HC WIND 0063

BW: 97 AWW: 698 ADG: 2.6

	CE	BW	WW	YW	TM	SC	CW	REA	MARB	TSI
EPDs:	6.4	-1.1	63	117	62	1.2	28	0.64	0.13	259.15

• HC Blue Rock 5065 - Dam of Distinction  
• HC Wind 0063 - Diamond Dam of Distinction

# Y 62

## HC LOYALIST 2400

3/28/2022 • M977406 • P

NGC LOYALIST 839F ET  
EM930613

LT PATRIOT 4004 PLD  
M&M MS NEW STANDARD 3517 PLDET

HC LANDSTAR 7197  
F1258594

LT LANDMARK 5052 PLD  
LT RUSHMORE 8060 PLD  
LT JENNY 3028 PLD

HCF UNCLE JESSE  
HC SILVER 1145

BW: 91 AWW: 655 ADG: 2.6

	CE	BW	WW	YW	TM	SC	CW	REA	MARB	TSI
EPDs:	10.8	-3.9	53	103	58	1.1	22	0.78	0.12	250.27

• A Loyalist X Landmark bull that records CE/15%, BW/6% EPDs

# Y 63

## HC LOYALIST 2401

3/11/2022 • M977407 • P

NGC LOYALIST 839F ET  
EM930613

LT PATRIOT 4004 PLD  
M&M MS NEW STANDARD 3517 PLDET

HC MS SS BLENDED 7211  
F1252041

HC SILVER SAND 1336  
HC BLUE ROCK 5157

M6 NEW STANDARD 842 P ET  
M&M MS STEALTH 9509 PLD ET  
LT SILVER DISTANCE 5342P  
HC BLEND 9023

LT-HC BLUE ROCK 0368 P  
HC SPUR 2113

BW: 102 AWW: 689 ADG: 2.6

	CE	BW	WW	YW	TM	SC	CW	REA	MARB	TSI
EPDs:	1.6	0.3	68	127	59	1.3	30	0.74	0.19	269.01

• HC Loyalist 2401 - WW/15%, TSI/15%

# Y 64

## HC LOYALIST 2402

3/12/2022 • M978074 • P

NGC LOYALIST 839F ET  
EM930613

LT PATRIOT 4004 PLD  
M&M MS NEW STANDARD 3517 PLD ET

HC MS CROSS COUNTRY 7219  
F1252047

LT LEDGER 0332 P  
LK MISS RIO 2119

M6 NEW STANDARD 842 P ET  
M&M MS STEALTH 9509 PLD ET

LT SILVER DISTANCE 5342P  
LT BELLE 7026 P

EATONS TRUE BLOOD 30030 POLLED  
HC LEAD R 3066

BW: 102 AWW: 642 ADG: 2.2

	CE	BW	WW	YW	TM	SC	CW	REA	MARB	TSI
EPDs:	3	-0.1	57	105	54	0.9	18	0.55	0.21	248.65

# Y 65

## HC BLUE STONE 2404

3/8/2022 • M977500 • D

HC BLUE STONE 0431  
M949409

BS BLUE ROCK 617 ET

HC FREE RANGE 6204

RBM FARGO Y111

HC MS FARGO 8015  
F1267816

HC NASHVILLE 1033

LT-HC BLUE ROCK 0368 P  
EATONS MISS BLAKE 30985

HC FREE RANGE 4201 ET  
HC LONE RANGER 4158  
SPARROWS FARGO 811U  
HC RHINESTONE 5100

BROBERG'S V41  
HC PAUL 4065

BW: 88 AWW: 653 ADG: 3.3

	CE	BW	WW	YW	TM	SC	CW	REA	MARB	TSI
EPDs:	6	-0.5	67	119	58	0.9	27	0.76	0.08	257.96

# Y 66

## HC PROBITY 2405

3/27/2022 • M977501 • P

CCC PROBITY 9506 P  
M948522

WC CCC SWEETHEART 6644 P ET

RBM FARGO Y111

HC MS FARGO 8021  
F1267817

LT RUSHMORE 8060 PLD

LT RIO BRAVO 3181 P  
LT BRENDA'S EASE 3055PLD

LT BLUE VALUE 7903 ET  
WC CCC SWEETHEART 1140 P  
SPARROWS FARGO 811U  
HC RHINESTONE 5100

SCC SPUR 49S PLD  
HC GM 8004

HC SPUR 1098

BW: 84 AWW: 650 ADG: 2.4

	CE	BW	WW	YW	TM	SC	CW	REA	MARB	TSI
EPDs:	9.7	-0.8	65	117	57	1.3	23	0.77	0.09	256.34

# Y 67

## HC BLUE STONE 2406

3/16/2022 • M977502 • D

HC BLUE STONE 0431  
M949409

BS BLUE ROCK 617 ET

HC FREE RANGE 6204

WR TOP HAND C631

HC MS FIRST HAND 8023  
F1267818

HC LEADER 1127

LT-HC BLUE ROCK 0368 P  
EATONS MISS BLAKE 30985

HC FREE RANGE 4201 ET  
HC LONE RANGER 4158  
LT LEDGER 0332 P  
WR MISS PRINCESS T629

LT LEADER BOARD 6110 P  
HC SILVER 8108

BW: 85 AWW: 544 ADG: 2.7

	CE	BW	WW	YW	TM	SC	CW	REA	MARB	TSI
EPDs:	6.7	-1.6	48	90	43	1	17	0.63	0.2	236.13

• HC Leader 1127 and HC Silver 8108 - Dams of Distinction

# Y 68

## HC PROBITY 2408

3/18/2022 • M977503 • P

CCC PROBITY 9506 P  
M948522

WC CCC SWEETHEART 6644 P ET

LT-HC BLUE ROCK 0368 P

HC MS AGATE 8037  
F1267431

LT RUSHMORE 8060 PLD

LT RIO BRAVO 3181 P  
LT BRENDA'S EASE 3055PLD

LT BLUE VALUE 7903 ET  
WC CCC SWEETHEART 1140 P  
LT BLUEGRASS 4017 P  
LT BRENDA'S EASE 3055PLD

HC HPF BLEND 888  
HC LEADER 8111

HC MORE BLEND 2095

BW: 97 AWW: 678 ADG: 2.8

	CE	BW	WW	YW	TM	SC	CW	REA	MARB	TSI
EPDs:	4.7	1.5	65	112	58	1.4	18	0.62	0.17	248.81

• HC Ms Agate 8037 has an average weaning ratio: 3/104

• HC Leader 8111 - Dam of Distinction

# Y 69

## HC PROBITY 2409

3/18/2022 • M977505 • P

CCC PROBITY 9506 P  
M948522

WC CCC SWEETHEART 6644 P ET

HC MS FIRST HAND 8044  
F1267436

LT RUSHMORE 8060 PLD

LT RIO BRAVO 3181 P  
LT BRENDA'S EASE 3055PLD

LT BLUE VALUE 7903 ET  
WC CCC SWEETHEART 1140 P  
LT LEDGER 0332 P  
WR MISS PRINCESS T629

WR TOP HAND C631

HC LONG RANGE 2175

LT LONG DISTANCE 9001 PLD  
HC MORE BLEND 0110

BW: 89 AWW: 689 ADG: 2.4

	CE	BW	WW	YW	TM	SC	CW	REA	MARB	TSI
EPDs:	10.2	-1.7	61	105	58	1.2	16	0.66	0.16	246.25

• HC Ms First Hand 8044 has an average weaning ratio: 3/104

# Y 70

## HC PROBITY 2410

3/29/2022 • M977506 • P

CCC PROBITY 9506 P  
M948522

WC CCC SWEETHEART 6644 P ET

WR TOP HAND C631

HC MS FIRST HAND 8049  
F1267441

LT RUSHMORE 8060 PLD

LT RIO BRAVO 3181 P  
LT BRENDA'S EASE 3055PLD

LT BLUE VALUE 7903 ET  
WC CCC SWEETHEART 1140 P  
LT LEDGER 0332 P  
WR MISS PRINCESS T629

WC ROCKET 0021 P  
HC CAD 3 9071

HC ROCKET 3062

BW: 90 AWW: 694 ADG: 2.5

	CE	BW	WW	YW	TM	SC	CW	REA	MARB	TSI
EPDs:	7.8	-0.2	64	108	58	1.4	18	0.71	0.15	245.89

• HC Rocket 3062 - Dam of Distinction

# Y 71

## HC PROBITY 2411

3/18/2022 • M977508 • P

CCC PROBITY 9506 P  
M948522

WC CCC SWEETHEART 6644 P ET

HC MS AGATE 8050  
F1267442

LT RUSHMORE 8060 PLD

LT RIO BRAVO 3181 P  
LT BRENDA'S EASE 3055PLD

LT BLUE VALUE 7903 ET  
WC CCC SWEETHEART 1140 P  
LT BLUEGRASS 4017 P  
LT BRENDA'S EASE 3055PLD

LT-HC BLUE ROCK 0368 P

HC ROCKET 3071

WC ROCKET 0021 P  
HC SPUR 9135

BW: 93 AWW: 640 ADG: 3

	CE	BW	WW	YW	TM	SC	CW	REA	MARB	TSI
EPDs:	9.1	-0.4	58	105	54	1.4	18	0.69	0.16	245.95

# Y 72

## HC BLUE STONE 2415

3/30/2022 • M977512 • P

HC BLUE STONE 0431  
M949409

BS BLUE ROCK 617 ET

HC FREE RANGE 6204

RBM FARGO Y111

HC MS FARGO 8061  
F1267820

HC LONG RANGE 3146

LT-HC BLUE ROCK 0368 P  
EATONS MISS BLAKE 30985

HC FREE RANGE 4201 ET  
HC LONE RANGER 4158  
SPARROWS FARGO 811U  
HC RHINESTONE 5100

LT LONG DISTANCE 9001 PLD  
HC SPUR 1091

BW: 67 AWW: 622 ADG: 3.1

	CE	BW	WW	YW	TM	SC	CW	REA	MARB	TSI
EPDs:	12.9	-4.1	58	109	52	1	22	0.73	0.11	254.69

• A Blue Stone son with top tier EPD rankings - CE,BW/5%

# Y 73

## HC BLUE STONE 2417

3/8/2022 • M977514 • S

HC BLUE STONE 0431  
M949409

BS BLUE ROCK 617 ET

HC FREE RANGE 6204

LT SILVER LEDGE 4063 P

HC MS SLEDGE 8073  
F1267472

HC SILVER SAND 4049

LT-HC BLUE ROCK 0368 P  
EATONS MISS BLAKE 30985

HC FREE RANGE 4201 ET  
HC LONE RANGER 4158  
LT LEDGER 0332 P  
LT MOLLY 8011 PLD

HC SILVER SAND 1336  
HC RIO 9020

BW: 93 AWW: 619 ADG: 2.9

	CE	BW	WW	YW	TM	SC	CW	REA	MARB	TSI
EPDs:	4.6	-0.4	56	106	52	1	22	0.65	0.19	250.87

• HC Silver Sand 4049 - Dam of Distinction



Lot 73

# Y 74

## HC PROBITY 2418

3/18/2022 • M978076 • P

CCC PROBITY 9506 P  
M948522

WC CCC SWEETHEART 6644 P ET

NGC CLASSIC 624D ET

HC MS CLASSIC 8090  
F1267489

HC PENDLETON 4154

LT RUSHMORE 8060 PLD

LT RIO BRAVO 3181 P  
LT BRENDA'S EASE 3055PLD

LT BLUE VALUE 7903 ET  
WC CCC SWEETHEART 1140 P  
LT LEDGER 0332 P  
M6 MS 761 NANCY 6100 P ET

BOX P PENDLETON 9022 P/S  
HC LONG RANGE 1188

BW: 96 AWW: 716 ADG: 2.7

	CE	BW	WW	YW	TM	SC	CW	REA	MARB	TSI
EPDs:	6.4	0.9	65	115	58	1.4	17	0.6	0.17	253.26

• HC Ms Classic 8090's average weaning ratio: 3/107

# Y 75

## HC PROBITY 2419

3/20/2022 • M977515 • S

CCC PROBITY 9506 P  
M948522

WC CCC SWEETHEART 6644 P ET

LT SILVER LEDGE 4063 P

HC MS SLEDGE 8095  
F1267493

HC LONG RANGE 4166

LT RUSHMORE 8060 PLD

LT RIO BRAVO 3181 P  
LT BRENDA'S EASE 3055PLD

LT BLUE VALUE 7903 ET  
WC CCC SWEETHEART 1140 P  
LT LEDGER 0332 P  
LT MOLLY 8011 PLD

LT LONG DISTANCE 9001 PLD  
HC GRID MAKER 2058

BW: 84 AWW: 653 ADG: 2.5

	CE	BW	WW	YW	TM	SC	CW	REA	MARB	TSI
EPDs:	11.5	-2	57	103	56	1.1	16	0.65	0.16	246.55

• HC Probity 2419's CE EPD ranks in the top 10% for the Charolais breed  
• HC Ms Classic 8095's average weaning ratio: 3 Bulls/107

# Y 76

## HC BLUE STONE 2420

3/27/2022 • M977516 • P

HC BLUE STONE 0431  
M949409

HC FREE RANGE 6204

LT SILVER LEDGE 4063 P

HC MS SLEDGE 8096  
F1267494

HC DUKE 4170

BS BLUE ROCK 617 ET

LT-HC BLUE ROCK 0368 P  
EATONS MISS BLAKE 30985

HC FREE RANGE 4201 ET  
HC LONE RANGER 4158  
LT LEDGER 0332 P  
LT MOLLY 8011 PLD

OAKDALE DUKE 9003P  
HC LEADER 2067

BW: 94 AWW: 631 ADG: 2.8

	CE	BW	WW	YW	TM	SC	CW	REA	MARB	TSI
EPDs:	7.2	-1.4	55	105	50	1	19	0.65	0.17	249.93

• HC Duke 4170 - Dam of Distinction

# Y 77

## HC PROBITY 2421

3/23/2022 • M977517 • P

CCC PROBITY 9506 P  
M948522

WC CCC SWEETHEART 6644 P ET

HCR EQUITY 3123 PLD

HC MS COMMISSIONER 8114  
F1267511

HC LONE RANGER 5063

LT RUSHMORE 8060 PLD

LT RIO BRAVO 3181 P  
LT BRENDA'S EASE 3055PLD

LT BLUE VALUE 7903 ET  
WC CCC SWEETHEART 1140 P  
HCR NETWORK 7017 PLD  
MISS HCR RANDI 8410 P TW

HC LONG RANGE 1395  
HC STASH 0039

BW: 98 AWW: 648 ADG: 3

	CE	BW	WW	YW	TM	SC	CW	REA	MARB	TSI
EPDs:	4.9	1.1	60	107	60	1.2	17	0.71	0.2	248.64

• HC Ms Commissioner 8114's average weaning ratio: 3 /115  
• HC Stash 0039 - Dam of Distinction

# Y 78

## HC PROBITY 2422

3/27/2022 • M977519 • P

CCC PROBITY 9506 P  
M948522

HCR EQUITY 3123 PLD

HC MS COMMISSIONER 8122  
F1267519

HC BLUE ROCK 5100

LT RUSHMORE 8060 PLD

LT RIO BRAVO 3181 P  
LT BRENDA'S EASE 3055PLD

LT BLUE VALUE 7903 ET  
WC CCC SWEETHEART 1140 P  
HCR NETWORK 7017 PLD  
MISS HCR RANDI 8410 P TW

LT-HC BLUE ROCK 0368 P  
HC LEADER 1039

BW: 107 AWW: 720 ADG: 2.5

	CE	BW	WW	YW	TM	SC	CW	REA	MARB	TSI
EPDs:	3	2.4	69	116	63	1.2	18	0.66	0.2	252.52

• HC Ms Commissioner 8122 has weaned 2 calves with an average ratio of 109



# Y 79 HC BLUE STONE 2423

3/5/2022 • M977520 • D

HC BLUE STONE 0431  
M949409

BS BLUE ROCK 617 ET  
HC FREE RANGE 6204  
BOX P SANDRON 5100 P  
HC JESSE 5111

LT-HC BLUE ROCK 0368 P  
EATONS MISS BLAKE 30985  
HC FREE RANGE 4201 ET  
HC LONE RANGER 4158  
HC SILVER SAND 1336  
BOX P AUDREY 9067 P  
HCF UNCLE JESSE  
HC SPUR 1076

BW: 91 AWW: 633 ADG: 1.9

	CE	BW	WW	YW	TM	SC	CW	REA	MARB	TSI
EPDs:	8.4	-1.8	60	107	53	0.9	18	0.69	0.13	249.63

- HC Spur 1076 - Dam of Distinction

# Y 80 HC BLUE STONE 2424

3/23/2022 • M977522 • S

HC BLUE STONE 0431  
M949409

BS BLUE ROCK 617 ET  
HC FREE RANGE 6204  
HCR EQUITY 3123 PLD  
HC SMOOTH BLEND 5135

LT-HC BLUE ROCK 0368 P  
EATONS MISS BLAKE 30985  
HC FREE RANGE 4201 ET  
HC LONE RANGER 4158  
HCR NETWORK 7017 PLD  
MISS HCR RANDI 8410 P TW  
HC PENDLETON 3334  
HC GRID MAKER 2002

BW: 83 AWW: 680 ADG: 2.7

	CE	BW	WW	YW	TM	SC	CW	REA	MARB	TSI
EPDs:	9.7	-2.4	60	106	56	1	20	0.7	0.19	251.48

- The strong maternal influence of HC Smooth Blend 5135 - Dam of Distinction and her mother HC Grid Maker 2002, an elite Diamond Dam of Distinction, can be found in several of the sale bull's pedigrees

# Y 81 HC BLUE STONE 2425

3/23/2022 • M977523 • D

HC BLUE STONE 0431  
M949409

BS BLUE ROCK 617 ET  
HC FREE RANGE 6204  
BOX P SANDRON 5100 P  
HC EQUITY 5181

LT-HC BLUE ROCK 0368 P  
EATONS MISS BLAKE 30985  
HC FREE RANGE 4201 ET  
HC LONE RANGER 4158  
HC SILVER SAND 1336  
BOX P AUDREY 9067 P  
HCR EQUITY 3123 PLD  
HC PENDLETON 3052

BW: 74 AWW: 642 ADG: 2.1

	CE	BW	WW	YW	TM	SC	CW	REA	MARB	TSI
EPDs:	14	-4.8	57	104	52	1	19	0.67	0.17	251.86

- HC Blue Stone 2425's CE and BW EPDs position him in the top 3% for the Charolais breed

# Y 82 HC BLUE STONE 2426

3/17/2022 • M977524 • P

HC BLUE STONE 0431  
M949409

BS BLUE ROCK 617 ET  
HC FREE RANGE 6204  
HCR EQUITY 3123 PLD  
HC LONE RANGER 5187

LT-HC BLUE ROCK 0368 P  
EATONS MISS BLAKE 30985  
HC FREE RANGE 4201 ET  
HC LONE RANGER 4158  
HCR NETWORK 7017 PLD  
MISS HCR RANDI 8410 P TW  
HC LONG RANGE 1395  
HC ROCKET 3062

BW: 96 AWW: 673 ADG: 2.9

	CE	BW	WW	YW	TM	SC	CW	REA	MARB	TSI
EPDs:	3.1	0.4	66	115	55	1	19	0.72	0.22	256.81

- HC Rocket 3062 - Dam of Distinction

# Y 83 HC BLUE STONE 2427

2/26/2022 • M977525 • P

HC BLUE STONE 0431  
M949409

BS BLUE ROCK 617 ET  
HC FREE RANGE 6204  
HCR EQUITY 3123 PLD  
HC ASPEN 5190

LT-HC BLUE ROCK 0368 P  
EATONS MISS BLAKE 30985  
HC FREE RANGE 4201 ET  
HC LONE RANGER 4158  
HCR NETWORK 7017 PLD  
MISS HCR RANDI 8410 P TW  
EATONS TRUE BLOOD 30030 POLLED  
HC LEAD R 3066

BW: 75 AWW: 610 ADG: 3

	CE	BW	WW	YW	TM	SC	CW	REA	MARB	TSI
EPDs:	12	-4.1	53	98	49	0.9	19	0.68	0.21	246.63

- Top ranking EPDs for CE/8% and BW/5%

# Y 84 HC BLUE STONE 2428

3/25/2022 • M977526 • S

HC BLUE STONE 0431  
M949409

BS BLUE ROCK 617 ET  
HC FREE RANGE 6204  
LT RUSHMORE 6033 PLD  
HC SLEDGE 6110

LT-HC BLUE ROCK 0368 P  
EATONS MISS BLAKE 30985  
HC FREE RANGE 4201 ET  
HC LONE RANGER 4158  
LT RUSHMORE 8060 PLD  
LT AMANDA 4338 PLD  
LT SILVER LEDGE 4063 P  
HC BLUE ROCK 2147

BW: 97 AWW: 659 ADG: 2.2

	CE	BW	WW	YW	TM	SC	CW	REA	MARB	TSI
EPDs:	4.9	-0.6	65	120	60	1.2	26	0.69	0.19	262.78

- HC Ms Momentum 8139's average weaning ratio: 3/105

# Y 85 HC BLUE STONE 2429

4/13/2022 • M977527 • P

HC BLUE STONE 0431  
M949409

BS BLUE ROCK 617 ET  
HC FREE RANGE 6204  
WC TOTAL RUSH 3044 P  
HC RIMROCK 6050

LT-HC BLUE ROCK 0368 P  
EATONS MISS BLAKE 30985  
HC FREE RANGE 4201 ET  
HC LONE RANGER 4158  
LT RUSHMORE 8060 PLD  
WC QUEEN 1120 P  
HC RIMROCK 4247  
HC LEAD 0138

BW: 83 AWW: 683 ADG: 3

	CE	BW	WW	YW	TM	SC	CW	REA	MARB	TSI
EPDs:	8	-2.4	61	108	56	1.2	20	0.65	0.16	251.08

- A lower birthweight coupled with a BW EDP rank of 15%

# Y 86 HC PROBITY 2430

4/10/2022 • M977528 • P

CCC PROBITY 9506 P  
M948522

LT RUSHMORE 8060 PLD  
WC CCC SWEETHEART 6644 P ET  
WR WRANGLER W601  
HC BLUE ROCK 6102

LT RIO BRAVO 3181 P  
LT BRENDA'S EASE 3055PLD  
LT BLUE VALUE 7903 ET  
WC CCC SWEETHEART 1140 P  
CMF 192 WRANGLER 256  
WR MISS PRINCESS T629  
LT-HC BLUE ROCK 0368 P  
HC MORE BLEND 2084

BW: 101 AWW: 683 ADG: 2.5

	CE	BW	WW	YW	TM	SC	CW	REA	MARB	TSI
EPDs:	5.1	1.2	64	112	62	1.4	20	0.72	0.13	249.4

- HC Ms Wrangler 8171's average weaning ratio: 3/111

# Y 87

## HC PROBITY 2431

3/5/2022 • M977529 • P

CCC PROBITY 9506 P  
M948522

LT RUSHMORE 8060 PLD  
WC CCC SWEETHEART 6644 P ET

HC MS SS BLENDED 8182  
F1267593

LT RIO BRAVO 3181 P  
LT BRENDA'S EASE 3055PLD

LT BLUE VALUE 7903 ET  
WC CCC SWEETHEART 1140 P

LT SILVER DISTANCE 5342P  
HC BLEND 9023

HC BLUE ROCK 2403  
HC PENDLETON 3096

BW: 88 AWW: 645 ADG: 2.8

	CE	BW	WW	YW	TM	SC	CW	REA	MARB	TSI
EPDs:	11.3	-2.1	59	105	57	1.2	16	0.59	0.16	247.43

• HC Probity 2431 - EPDs for CE/15% and BW/20%

# Y 88

## HC PROBITY 2433

3/24/2022 • M977532 • P

CCC PROBITY 9506 P  
M948522

LT RUSHMORE 8060 PLD  
WC CCC SWEETHEART 6644 P ET

HC MS CROSS COUNTRY 8186  
F1267596

LT RIO BRAVO 3181 P  
LT BRENDA'S EASE 3055PLD

LT BLUE VALUE 7903 ET  
WC CCC SWEETHEART 1140 P

LT SILVER DISTANCE 5342P  
LT BELLE 7026 P

HC PENDLETON 3334  
HC COLUMBUS 3151

BW: 87 AWW: 647 ADG: 2

	CE	BW	WW	YW	TM	SC	CW	REA	MARB	TSI
EPDs:	12.2	-2.3	58	101	58	1	11	0.59	0.14	243.68

• HC Probity 2433 - Note the 12.2 EPD for calving ease that ranks in the top 7% for the breed

# Y 89

## HC BLUE STONE 2434

3/18/2022 • M977533 • P

HC BLUE STONE 0431  
M949409

BS BLUE ROCK 617 ET  
HC FREE RANGE 6204

HC MS SS BLENDED 8188  
F1267597

HC SILVER SAND 1336  
HC EQUITY 6177

LT-HC BLUE ROCK 0368 P  
EATONS MISS BLAKE 30985

HC FREE RANGE 4201 ET  
HC LONE RANGER 4158

LT SILVER DISTANCE 5342P  
HC BLEND 9023

HCR EQUITY 3123 PLD  
HC ROCKET 4067

BW: 90 AWW: 682 ADG: 2.3

	CE	BW	WW	YW	TM	SC	CW	REA	MARB	TSI
EPDs:	8.8	-2.2	62	107	56	0.9	18	0.63	0.18	250.78

# Y 90

## HC BLUE STONE 2435

3/22/2022 • M977535 • S

HC BLUE STONE 0431  
M949409

BS BLUE ROCK 617 ET  
HC FREE RANGE 6204

HC MS WRANGLER 8195  
F1267602

WR WRANGLER W601  
HC LONE RANGER 6189

LT-HC BLUE ROCK 0368 P  
EATONS MISS BLAKE 30985

HC FREE RANGE 4201 ET  
HC LONE RANGER 4158

CMF 192 WRANGLER 256  
WR MISS PRINCESS T629

HC LONG RANGE 1395  
HC BLUE ROCK 4106

BW: 90 AWW: 609 ADG: 2.6

	CE	BW	WW	YW	TM	SC	CW	REA	MARB	TSI
EPDs:	8.2	-1.8	59	108	52	1.1	21	0.72	0.19	253.19

• HC Lone Ranger 6189 - Dam of Distinction

# Y 91

## HC BLUE STONE 2436

3/18/2022 • M977536 • D

HC BLUE STONE 0431  
M949409

BS BLUE ROCK 617 ET  
HC FREE RANGE 6204

HC MS FIRST HAND 8205  
F1267606

WR TOP HAND C631  
HC ROCKET 3063

LT-HC BLUE ROCK 0368 P  
EATONS MISS BLAKE 30985

HC FREE RANGE 4201 ET  
HC LONE RANGER 4158

LT LEDGER 0332 P  
WR MISS PRINCESS T629

WC ROCKET 0021 P  
HC SPUR 9076

BW: 80 AWW: 625 ADG: 2.6

	CE	BW	WW	YW	TM	SC	CW	REA	MARB	TSI
EPDs:	9.4	-2.7	57	101	49	1.1	19	0.72	0.19	246.91

• A lower birthweight of 80 lbs supports the BW EPD 15% ranking

# Y 92

## HC FRANCHISE 2441

3/29/2022 • M977541 • S

HC LRC FRANCHISE 8778 ET  
EM934389

LT LEDGER 0332 P  
M6 MS 761 NANCY 6100 P ET

HC MS RANGER 9024  
F1281771

HC LONE RANGER 4366  
HC MORE BLEND 2089

LT BLUEGRASS 4017 P  
LT BRENDA 6120 PLD

WCR SIR DUKE 761  
M6 MS H45 NANCY 382 ET

HC LONG RANGE 1395  
HC PENDLETON 2047

HC HPF BLEND 888  
HC WIND 8058

BW: 91 AWW: 655 ADG: 2.7

	CE	BW	WW	YW	TM	SC	CW	REA	MARB	TSI
EPDs:	4.5	0.9	61	107	53		21	0.57	0.15	246.85

# Y 93

## HC MEDALLION 2445

3/11/2022 • M977544 • P

BOX P MEDALLION 0153 P  
M947928

LT AUTHORITY 7229 PLD  
BOX P PENNE 4040 P

HC MS SLATE 9045  
F1281789

HC BLUE ROCK 2403  
HC LONE RANGER 3124

LHD CHOTEAU B1669 P  
LT KATY 4273 PLD

BOX P PENDLETON 9022 P/S  
BOX P BOOTSIE 4098 P

LT-HC BLUE ROCK 0368 P  
HC LEAD R 0120

HC LONG RANGE 1395  
HC NASHVILLE 1025

BW: 65 AWW: 629 ADG: 3

	CE	BW	WW	YW	TM	SC	CW	REA	MARB	TSI
EPDs:	12.8	-5.5	59	108	53	1	20	0.65	0.19	256.43

• Top ranking EPDs - CE/6% and BW/2%  
• HC Lone Ranger 3124 and HC Nashville 1025 - Dams of Distinction

# Y 94

## HC FRANCHISE 2446

3/7/2022 • M977575 • P

HC LRC FRANCHISE 8778 ET  
EM934389

LT LEDGER 0332 P  
M6 MS 761 NANCY 6100 P ET

HC MS DUKE 9049  
F1293616

OAKDALE DUKE 9003P  
HC LONG RANGE 3146

LT BLUEGRASS 4017 P  
LT BRENDA 6120 PLD

WCR SIR DUKE 761  
M6 MS H45 NANCY 382 ET

VCR SIR DUKE 135 PLD  
MISS VELVEETA JANE 630

LT LONG DISTANCE 9001 PLD  
HC SPUR 1091

BW: 82 AWW: 694 ADG: 2.4

	CE	BW	WW	YW	TM	SC	CW	REA	MARB	TSI
EPDs:	10.8	-2.9	56	101	52		10	0.55	0.19	246.89

• HC Franchise 2446 - EPD ranking for CE,BW/15%

# Y 95 HC MEDALLION 2448

3/30/2022 • M977576 • P

LT AUTHORITY 7229 PLD  
 BOX P MEDALLION 0153 P  
 M947928  
 BOX P PENNE 4040 P  
 HC LEDGER 4396  
 HC MS LE DUKE 9054  
 F1281793  
 HC LONG RANGE 4007  
 LHD CHOTEAU B1669 P  
 LT KATY 4273 PLD  
 BOX P PENDLETON 9022 P/S  
 BOX P BOOTSIE 4098 P  
 LT LEDGER 0332 P  
 HC DUKE 2184  
 HC LONG RANGE 2410  
 HC GRID MAKER 6037

BW: 87 AWW: 677 ADG: 2.6

	CE	BW	WW	YW	TM	SC	CW	REA	MARB	TSI
EPDs:	3.6	-0.4	63	112	57		18	0.66	0.16	253.18

# Y 96 HC FRANCHISE 2451

3/14/2022 • M977577 • P

HC LRC FRANCHISE 8778 ET  
 EM934389  
 M6 MS 761 NANCY 6100 P ET  
 LT SILVER LEDGE 4063 P  
 HC MS SLEDGE 9066  
 F1281804  
 HC PENDLETON 4110  
 LT BLUEGRASS 4017 P  
 LT BRENDA 6120 PLD  
 WCR SIR DUKE 761  
 M6 MS H45 NANCY 382 ET  
 LT LEDGER 0332 P  
 LT MOLLY 8011 PLD  
 BOX P PENDLETON 9022 P/S  
 HC BLEND 1026

BW: 78 AWW: 617 ADG: 2.8

	CE	BW	WW	YW	TM	SC	CW	REA	MARB	TSI
EPDs:	9.4	-1.8	50	100	45		21	0.53	0.21	246.41

• HC Blend 1026 - Dam of Distinction

# Y 97 HC FRANCHISE 2452

3/28/2022 • M977578 • P

HC LRC FRANCHISE 8778 ET  
 EM934389  
 M6 MS 761 NANCY 6100 P ET  
 HCR EQUITY 3123 PLD  
 HC MS COMMISSIONER 9067  
 F1281805  
 HC PENDLETON 4121  
 LT LEDGER 0332 P  
 LT BLUEGRASS 4017 P  
 LT BRENDA 6120 PLD  
 WCR SIR DUKE 761  
 M6 MS H45 NANCY 382 ET  
 HCR NETWORK 7017 PLD  
 MISS HCR RANDI 8410 P TW  
 BOX P PENDLETON 9022 P/S  
 HC BLEND 1063

BW: 81 AWW: 645 ADG: 2.6

	CE	BW	WW	YW	TM	SC	CW	REA	MARB	TSI
EPDs:	8.6	-1.3	56	101	49		19	0.56	0.23	245.94

# Y 98 HC MEDALLION 2453

3/20/2022 • M977579 • P

BOX P MEDALLION 0153 P  
 M947928  
 M6 MS 761 NANCY 6100 P ET  
 LT SILVER LEDGE 4063 P  
 HC MS SLEDGE 9072  
 F1282623  
 HC RIVER 4163  
 LT AUTHORITY 7229 PLD  
 LHD CHOTEAU B1669 P  
 LT KATY 4273 PLD  
 BOX P PENDLETON 9022 P/S  
 BOX P BOOTSIE 4098 P  
 LT LEDGER 0332 P  
 LT MOLLY 8011 PLD  
 HC STASH 0372  
 HC LONG RANGE 2036

BW: 83 AWW: 642 ADG: 2.6

	CE	BW	WW	YW	TM	SC	CW	REA	MARB	TSI
EPDs:	4	-0.6	61	114	50	1.1	19	0.63	0.15	255.73

# Y 99 HC MEDALLION 2456

3/17/2022 • M977582 • P

BOX P MEDALLION 0153 P  
 M947928  
 BOX P PENNE 4040 P  
 HC BLUE ROCK 6339  
 HC MS BROTHER 9081  
 F1281812  
 HC GRID MAKER 5016 TW  
 LHD CHOTEAU B1669 P  
 LT KATY 4273 PLD  
 BOX P PENDLETON 9022 P/S  
 BOX P BOOTSIE 4098 P  
 LT-HC BLUE ROCK 0368 P  
 HC LEAD R 0120  
 M6 GRID MAKER 104 PET  
 HC EZTQ 7080

BW: 82 AWW: 633 ADG: 2.3

	CE	BW	WW	YW	TM	SC	CW	REA	MARB	TSI
EPDs:	5.8	-1.4	64	114	53		22	0.72	0.18	256.89



Lot 98



Lot 100

# Y 100 HC PYRAMID 2459

3/16/2022 • M977584 • P

HCR PYRAMID 0203 PLD  
 M942367  
 MISS HCR FREDIA 6505 PLD ET  
 BROBERG'S SOLUTION D136  
 HC MS CONCLUSION 9086  
 F1281816  
 HC BLUE ROCK 5049  
 LT PYRAMID 6164 PLD  
 LT SUNDANCE 2251 PLD  
 HC LONG RANGE 2167  
 M6 FRESH AIR 8165 P ET  
 MISS HCR RANDI 9410 PLD  
 DCR MR SOLUTION W13  
 BROBERG'S MS FINK A32  
 LT-HC BLUE ROCK 0368 P  
 HC LEADER 9120

BW: 86 AWW: 643 ADG: 3.3

	CE	BW	WW	YW	TM	SC	CW	REA	MARB	TSI
EPDs:	5.6	0.1	65	117	59		22	0.7	0.13	257.62

• HC Blue Rock 5049 - Dam of Distinction

# Y 101 HC MEDALLION 2464

3/13/2022 • M977588 • P

LT AUTHORITY 7229 PLD  
BOX P MEDALLION 0153 P  
M947928

BOX P PENNE 4040 P

BROBERG'S SOLUTION D136  
HC MS CONCLUSION 9112  
F1282562

HC BLUE STONE 5176

LHD CHOTEAU B1669 P  
LT KATY 4273 PLD

BOX P PENDLETON 9022 P/S  
BOX P BOOTSIE 4098 P  
DCR MR SOLUTION W13  
BROBERG'S MS FINK A32

HC BLUE ROCK 2403  
HC LONE RANGER 3026

BW: 81 AWW: 624 ADG: 2.5

	CE	BW	WW	YW	TM	SC	CW	REA	MARB	TSI
EPDs:	4.1	-0.8	63	114	51		21	0.64	0.14	255.53

# Y 102 HC PYRAMID 2465

3/25/2022 • M977589 • P

LT PYRAMID 6164 PLD  
HCR PYRAMID 0203 PLD  
M942367

MISS HCR FREDIA 6505 PLD ET

HC BLUE ROCK 2403

HC PINTA 5189

LT SUNDANCE 2251 PLD  
HC LONG RANGE 2167

M6 FRESH AIR 8165 P ET  
MISS HCR RANDI 9410 PLD  
LT-HC BLUE ROCK 0368 P  
HC LEAD R 0120

HC COLUMBUS 3405  
HC BLUE ROCK 3065

BW: 102 AWW: 625 ADG: 3

	CE	BW	WW	YW	TM	SC	CW	REA	MARB	TSI
EPDs:	-0.9	3.1	67	121	59		22	0.72	0.19	260.56

• HC Pinta 5189 - Dam of Distinction

# Y 103 HC PYRAMID 2466

3/20/2022 • M977590 • P

LT PYRAMID 6164 PLD  
HCR PYRAMID 0203 PLD  
M942367

MISS HCR FREDIA 6505 PLD ET

HC BLUE ROCK 6339

HC MS BROTHER 9116  
F1282566

HC DUKE 5216

LT SUNDANCE 2251 PLD  
HC LONG RANGE 2167

M6 FRESH AIR 8165 P ET  
MISS HCR RANDI 9410 PLD  
LT-HC BLUE ROCK 0368 P  
HC LEAD R 0120

OAKDALE DUKE 9003P  
HC LONE RANGER 3150

BW: 74 AWW: 633 ADG: 2.6

	CE	BW	WW	YW	TM	SC	CW	REA	MARB	TSI
EPDs:	11.7	-3.1	61	111	56		19	0.69	0.16	256.88

• HC Pyramid 2466- EPD ranking for CE/9% and BW/10%

# Y 104 HC FRANCHISE 2467

3/25/2022 • M977591 • P

LT LEDGER 0332 P  
HC LRC FRANCHISE 8778 ET  
EM934389

M6 MS 761 NANCY 6100 P ET

WCR SIR KINGSBURY 7334 P

HC MS REIGN 9121  
F1282568

HC LONE RANGER 6006 ET

LT BLUEGRASS 4017 P  
LT BRENDA 6120 PLD

WCR SIR DUKE 761  
M6 MS H45 NANCY 382 ET  
WCR KINGSBURY 116 P  
WCR MS FIREWATER 127 P

HC LONG RANGE 1395  
HC LEAD R 0120

BW: 90 AWW: 624 ADG: 2.8

	CE	BW	WW	YW	TM	SC	CW	REA	MARB	TSI
EPDs:	7.5	-1.2	51	100	49		19	0.58	0.19	246.35

# Y 105 HC FRANCHISE 2474

3/9/2022 • M977597 • P

LT LEDGER 0332 P  
HC LRC FRANCHISE 8778 ET  
EM934389

M6 MS 761 NANCY 6100 P ET

BOX P SANDRON 5100 P

HC MS SANDRON 9148  
F1282587

HC EQUITY 6171

LT BLUEGRASS 4017 P  
LT BRENDA 6120 PLD

WCR SIR DUKE 761  
M6 MS H45 NANCY 382 ET  
HC SILVER SAND 1336  
BOX P AUDREY 9067 P

HCR EQUITY 3123 PLD  
HC BLAZE 4040

BW: 87 AWW: 547 ADG: 2.9

	CE	BW	WW	YW	TM	SC	CW	REA	MARB	TSI
EPDs:	8.8	-1.3	44	87	42		16	0.54	0.2	234.12

# Y 106 HC PYRAMID 2476

4/5/2022 • M977599 • P

LT PYRAMID 6164 PLD  
HCR PYRAMID 0203 PLD  
M942367

MISS HCR FREDIA 6505 PLD ET

WCR SIR KINGSBURY 7334 P

HC MS REIGN 9151  
F1282590

HC SANDY 6192

LT SUNDANCE 2251 PLD  
HC LONG RANGE 2167

M6 FRESH AIR 8165 P ET  
MISS HCR RANDI 9410 PLD  
WCR KINGSBURY 116 P  
WCR MS FIREWATER 127 P

HC SILVER SAND 1336  
HC BLUE ROCK 4117

BW: 101 AWW: 672 ADG: 3

	CE	BW	WW	YW	TM	SC	CW	REA	MARB	TSI
EPDs:	3.8	0.6	64	118	62		21	0.66	0.09	257.96

# Y 107 HC FRANCHISE 2483

3/15/2022 • M977602 • P

LT LEDGER 0332 P  
HC LRC FRANCHISE 8778 ET  
EM934389

M6 MS 761 NANCY 6100 P ET

HCR DURACELL 7130 PLD

HC MS CAPACITOR 9184  
F1282607

HC MS COMMISSIONER 7158

LT BLUEGRASS 4017 P  
LT BRENDA 6120 PLD

WCR SIR DUKE 761  
M6 MS H45 NANCY 382 ET  
SUMMIT POLLED VALUE Z10  
MISS HCR RANDI 1425 PLD

HCR EQUITY 3123 PLD  
HC LONE RANGER 4158

BW: 70 AWW: 574 ADG: 2.4

	CE	BW	WW	YW	TM	SC	CW	REA	MARB	TSI
EPDs:	11.5	-3.4	49	96	46		20	0.61	0.19	244.72

• HC Ms Commissioner 7158 - Dam of Distinction



Lot 107

# Y 108 HC MEDALLION 2484

3/20/2022 • M977603 • P

LT AUTHORITY 7229 PLD  
 BOX P MEDALLION 0153 P  
 M947928  
 BOX P PENNE 4040 P  
 LT LONG DISTANCE 9001 PLD  
 HC MS CROSS COUNTRY 9192  
 F1282613  
 HC LANDSTAR 7196  
 LHD CHOTEAU B1669 P  
 LT KATY 4273 PLD  
 BOX P PENDLETON 9022 P/S  
 BOX P BOOTSIE 4098 P  
 LT SILVER DISTANCE 5342 P  
 LT BELLE 7026 P  
 LT LANDMARK 5052 PLD  
 HC BLUE ROCK 5117

BW: 98 AWW: 587 ADG: 2.5

	CE	BW	WW	YW	TM	SC	CW	REA	MARB	TSI
EPDs:	3.9	0	52	96	51	0.7	12	0.6	0.12	238.7

# Y 109 HC FRANCHISE 2486

3/7/2022 • M977605 • P

HC LRC FRANCHISE 8778 ET  
 EM934389  
 M6 MS 761 NANCY 6100 P ET  
 HCR EQUITY 3123 PLD  
 F1282617  
 HC MS CROSS COUNTRY 7213  
 LT BLUEGRASS 4017 P  
 LT BRENDA 6120 PLD  
 WCR SIR DUKE 761  
 M6 MS H45 NANCY 382 ET  
 HCR NETWORK 7017 PLD  
 MISS HCR RANDI 8410 P TW  
 LT LONG DISTANCE 9001 PLD  
 HC BLAZE 5163

BW: 74 AWW: 690 ADG: 2.4

	CE	BW	WW	YW	TM	SC	CW	REA	MARB	TSI
EPDs:	12.7	-3.7	53	94	53		14	0.57	0.26	242.28

• HC Ms Commissioner 9197 has weaned 2 bulls with an average weaning ratio of 111

# Y 110 HC PYRAMID 2489

3/28/2022 • M977607 • S

HCR PYRAMID 0203 PLD  
 M942367  
 MISS HCR FREDA 6505 PLD ET  
 HC BLUE ROCK 6339  
 HC MS BROTHER 9229  
 F1281799  
 HC RIVER 4167  
 LT PYRAMID 6164 PLD  
 LT SUNDANCE 2251 PLD  
 HC LONG RANGE 2167  
 M6 FRESH AIR 8165 P ET  
 MISS HCR RANDI 9410 PLD  
 LT-HC BLUE ROCK 0368 P  
 HC LEAD R 0120  
 HC STASH 0372  
 HC PENDLETON 2060

BW: 91 AWW: 616 ADG: 2.4

	CE	BW	WW	YW	TM	SC	CW	REA	MARB	TSI
EPDs:	0.6	2.3	65	118	55		21	0.71	0.15	257.6

# Y 111 HC PROBITY 2494

3/13/2022 • M977645 • P

CCC PROBITY 9506 P  
 M948522  
 HC MS CANYON 0006  
 F1297075  
 HC GRID MAKER 2002  
 LT RUSHMORE 8060 PLD  
 LT RIO BRAVO 3181 P  
 LT BRENDA'S EASE 3055PLD  
 WC CCC SWEETHEART 6644 P ET  
 LT BLUE VALUE 7903 ET  
 WC CCC SWEETHEART 1140 P  
 LT-HC BLUE ROCK 0368 P  
 HC LEADER 8145  
 M6 GRID MAKER 104 PET  
 HC CIGAR 2043  
 HC RIMROCK 4247

BW: 104 AWW: 690 ADG: 2.9

	CE	BW	WW	YW	TM	SC	CW	REA	MARB	TSI
EPDs:	0.9	3.8	69	121	64	1.5	21	0.73	0.13	255.5

• HC Probity 2494 - EPD rankings for WW/top 15% and YW/top 20%  
 • HC Grid Maker 2002 - Diamond Dam of Distinction

# Y 112 HC PROBITY 2497

3/8/2022 • M977611 • P

CCC PROBITY 9506 P  
 M948522  
 HC MS FIRST HAND 0020  
 F1297086  
 HC PENDLETON 3060  
 LT RUSHMORE 8060 PLD  
 LT RIO BRAVO 3181 P  
 LT BRENDA'S EASE 3055PLD  
 WC CCC SWEETHEART 6644 P ET  
 LT BLUE VALUE 7903 ET  
 WC CCC SWEETHEART 1140 P  
 LT LEDGER 0332 P  
 WR MISS PRINCESS T629  
 WR TOP HAND C631  
 BOX P PENDLETON 9022 P/S  
 HC CARGO 9065

BW: 78 AWW: 632 ADG: 2.3

	CE	BW	WW	YW	TM	SC	CW	REA	MARB	TSI
EPDs:	9.8	-1.1	62	108	56	1.4	18	0.64	0.18	248.72

• HC Cargo 9065 - Dam of Distinction



Lot 111

# Y 113 HC WAYLON 2517

3/14/2022 • M977620 • S

CCC PROBITY 9506 P  
 M948522  
 HC MS FANCY 0121  
 F1297167  
 HC SMOOTH BLEND 6125  
 LT RUSHMORE 8060 PLD  
 LT RIO BRAVO 3181 P  
 LT BRENDA'S EASE 3055PLD  
 WC CCC SWEETHEART 6644 P ET  
 LT BLUE VALUE 7903 ET  
 WC CCC SWEETHEART 1140 P  
 LT-HC BLUE ROCK 0368 P  
 EATONS MISS BLAKE 30985  
 BS BLUE ROCK 617 ET  
 HC PENDLETON 3334  
 HC BLUE 3032

BW: 105 AWW: 642 ADG: 3.1

	CE	BW	WW	YW	TM	SC	CW	REA	MARB	TSI
EPDs:	3.8	2.5	67	120	63	1.6	21	0.67	0.17	256.99

• HC Waylon 2517 - EPDs for WW/YW rank in the top 20% for the breed

# Y 114 HC KNIGHTED 2518

3/1/2022 • M977621 • H

WCR SIR KINGSBURY 7334 P  
 M896195  
 HC MS BERETTA 0124  
 F1297169  
 HC BLUE STONE 6155  
 WCR KINGSBURY 116 P  
 EATONS VISIONARY 2044 P  
 WCR MISS POWEREDGE 9132 P  
 TR MR FIREWATER 8600U  
 WCR MS PRINCE 939 P  
 WCF MR SILVER GUN 467  
 DCR MS 8141 DUKE C111  
 DCR MR SILVER GUN F63

BW: 73 AWW: 663 ADG: 2.6

	CE	BW	WW	YW	TM	SC	CW	REA	MARB	TSI
EPDs:	9	-2.1	56	109	60	0.7	21	0.63	0.12	254.17

# Y 115 HC MOMENTUM 2520

3/8/2022 • M977622 • D

LT RUSHMORE 8060 PLD  
 LT RUSHMORE 6033 PLD  
 M880332

LT AMANDA 4338 PLD

BS BLUE ROCK 617 ET

HC MS BLUE SAGE 0137  
 F1297181

HC EQUITY 6214

LT RIO BRAVO 3181 P  
 LT BRENDA'S EASE 3055PLD

LT LONG DISTANCE 9001 PLD  
 LT AMANDA 6208 PLD

LT-HC BLUE ROCK 0368 P  
 EATONS MISS BLAKE 30985

HCR EQUITY 3123 PLD  
 HC ROCKET 4043

BW: 86 AWW: 621 ADG: 2.8

	CE	BW	WW	YW	TM	SC	CW	REA	MARB	TSI
EPDs:	8.2	-2.2	63	116	63	1.3	26	0.72	0.18	261.23

• HC Equity 6214 - Dam of Distinction

# Y 116 HC COMMISSIONER 2525

3/8/2022 • M977625 • P

HCR EQUITY 3123 PLD  
 M836788

HCR NETWORK 7017 PLD

MISS HCR RANDI 8410 P TW

WCR SIR KINGSBURY 7334 P

HC MS REIGN 0160  
 F1297200

HC MS CROSS COUNTRY 7193

NWMSU DOC SILVER 362 PLD  
 MISS HCR WIND 527 PLD ET

SCHURRTOP HCR RANCHER  
 MISS HCR WIND 4023 PLD

WCR KINGSBURY 116 P  
 WCR MS FIREWATER 127 P

LT LONG DISTANCE 9001 PLD  
 HC BLUE ROCK 5093

BW: 73 AWW: 608 ADG: 2.5

	CE	BW	WW	YW	TM	SC	CW	REA	MARB	TSI
EPDs:	11.3	-3.5	52	95	53	0.4	10	0.6	0.15	242.16

• HC Commissioner 2525 - EPD ranking for CE/ top 15% and BW/top 7%

# Y 117 HC COMMISSIONER 2526

3/8/2022 • M977626 • P

HCR EQUITY 3123 PLD  
 M836788

MISS HCR RANDI 8410 P TW

HC LEDGER 4396

HC MS LE DUKE 0162  
 F1297202

HC LANDSTAR 7197

HCR NETWORK 7017 PLD

NWMSU DOC SILVER 362 PLD  
 MISS HCR WIND 527 PLD ET

SCHURRTOP HCR RANCHER  
 MISS HCR WIND 4023 PLD

LT LEDGER 0332 P  
 HC DUKE 2184

LT LANDMARK 5052 PLD  
 HC JESSE 5122

BW: 68 AWW: 605 ADG: 2.5

	CE	BW	WW	YW	TM	SC	CW	REA	MARB	TSI
EPDs:	14.3	-5.1	49	88	52		13	0.73	0.19	238.19

• HC Commissioner 2526 - EPD ranking for CE/ top 3% and BW/top 2%

# Y 118 HC MOMENTUM 2527

3/5/2022 • M977627 • P

LT RUSHMORE 6033 PLD  
 M880332

LT AMANDA 4338 PLD

HC LEDGER 4396

HC MS LE DUKE 0163  
 F1297204

HC MS COMMISSIONER 7206

LT RUSHMORE 8060 PLD  
 LT BRENDA'S EASE 3055PLD

LT LONG DISTANCE 9001 PLD  
 LT AMANDA 6208 PLD

LT LEDGER 0332 P  
 HC DUKE 2184

HCR EQUITY 3123 PLD  
 HC SMOOTH BLEND 5135

BW: 73 AWW: 689 ADG: 3.1

	CE	BW	WW	YW	TM	SC	CW	REA	MARB	TSI
EPDs:	11.4	-3.7	66	114	66		22	0.66	0.18	257.4

• HC Smooth Blend 5135 - Dam of Distinction

# Y 119 HC COMMISSIONER 2532

3/5/2022 • M977630 • P

HCR EQUITY 3123 PLD  
 M836788

MISS HCR RANDI 8410 P TW

WCR SIR KINGSBURY 7334 P

HC MS REIGN 0180  
 F1297220

HC MS FIRST HAND 8057

HCR NETWORK 7017 PLD

NWMSU DOC SILVER 362 PLD  
 MISS HCR WIND 527 PLD ET

SCHURRTOP HCR RANCHER  
 MISS HCR WIND 4023 PLD

WCR KINGSBURY 116 P  
 WCR MS FIREWATER 127 P

WR TOP HAND C631  
 HC GRID MAKER 3130

BW: 84 AWW: 606 ADG: 2.6

	CE	BW	WW	YW	TM	SC	CW	REA	MARB	TSI
EPDs:	5.2	-0.2	54	101	53	0.6	17	0.69	0.17	245.46



Lot 118

# Y 120 HC KNIGHTED 2533

3/7/2022 • M977631 • P S

WCR SIR KINGSBURY 7334 P  
 M896195

WCR MS FIREWATER 127 P

LT RUSHMORE 6033 PLD

HC MS MOMENTUM 0186  
 F1297224

HC MS CLASSIC 8083

WCR KINGSBURY 116 P

EATONS VISIONARY 2044 P  
 WCR MISS POWEREDGE 9132 P

TR MR FIREWATER 8600U  
 WCR MS PRINCE 939 P

LT RUSHMORE 8060 PLD  
 LT AMANDA 4338 PLD

NGC CLASSIC 624D ET  
 HC BLUE ROCK 4111

BW: 83 AWW: 600 ADG: 3.2

	CE	BW	WW	YW	TM	SC	CW	REA	MARB	TSI
EPDs:	10	-3.2	51	107	56	0.9	23	0.61	0.07	253.71

• HC Knighted 2533 has an EPD ranking in the Charolais top 9% for the BW trait

# Y 121 HC DUKE 2534

3/5/2022 • P1388658 • P

DCR MR SIR DUKE E27  
 M899990

DCR MS SUBSTANCE C179

LT RUSHMORE 6033 PLD

HC MS MOMENTUM 0190  
 F1297228

HC MS CLASSIC 8099

WCR SIR DUKE 8141 P

WCR MS DESIGN 6238 P

DCR MR SUBSTANCE A240  
 JCH MS EASY BLEND T117

LT RUSHMORE 8060 PLD  
 LT AMANDA 4338 PLD

NGC CLASSIC 624D ET  
 HC LONE RANGER 4187

BW: 86 AWW: 640 ADG: 3.2

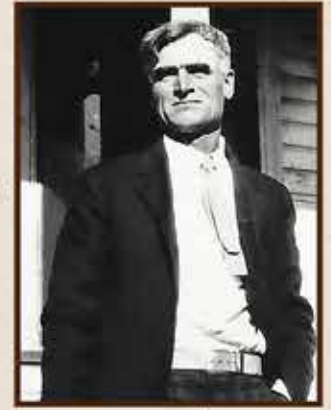
	CE	BW	WW	YW	TM	SC	CW	REA	MARB	TSI
EPDs:	8.9	-0.1	70	124	64	1.1	31	0.7	0.23	265.54

# Our History

James Wright, a native of Grant County, Wisconsin, came to Nebraska in 1872 with his parents. They arrived with three teams of oxen and forty head of cattle. In Hamilton County, Nebraska, James bought a homestead right and timber claim of 80 acres. In 1886, he headed west to the Sandhills of Nebraska and settled in Grant County, purchasing land in 1887.

James was the father of four boys. His son, Ben Wright, took over a portion of the ranch and continued in the cattle business, buying additional neighboring homesteads. Opal, one of Ben's three daughters, inherited a share of the land. She and husband, Merle Rex, formed a ranching operation, with their daughter, Merla, and her husband, Mose Hebbert.

What began as a Hereford based commercial cow-calf ranch transitioned into a purebred operation with the purchase of registered Charolais cows. The last of the commercial cows were dispersed in 1982 and the Hebbert Charolais partnership was formed between Mose and Merla, their son, Dave, and his wife, Mickie. Dave and Mickie's oldest son, Matt and wife, Lacy, are now managing partners in Hebbert Charolais. Their sons, Dillon and Waylon, represent the seventh generation to live and work on the family owned ranch.



Ben Wright



Merla Rex

We are thankful for those who laid the foundation of raising good cattle, a tradition of riding and raising good horses and being faithful stewards of the land. We are dedicated to continue that legacy and build upon it.



Branding 1950

- ★Nebraska Pioneer Award - 1886
- ★BIF (Beef Improvement Federation) Seedstock Nominee - 1995
- ★American International Charolais Association Seedstock Producer of the Year - 1996
- ★NCA Outstanding Producer Award - 2010
- ★Mose Hebbert honored as an American Quarter Horse Association Legacy Breeder - 2016
- ★Dave and Mickie Hebbert AICA Hall of Fame Inductees - 2018



# HEBBERT

*Charolais Bulls*

**Y** Hebbert Ranch  
62075 Hebbert Lane  
Hyannis, NE 69350

**FIRST CLASS MAIL**



[www.HebbertRanch.com](http://www.HebbertRanch.com)